

AKTIEBOLAGET

KOSTA GLASBRUK

KOSTA + SWEDEN

AKTIEBOLAGET
KOSTA GLASBRUK

KOSTA

SWEDEN

De föremål i denna katalog, som betecknas med bokstäverna **Bh.**, äro komponerade av Arkitekt **Elis Bergh** och de med **Ol.** betecknade av Konstnär **Edvin Ollers**. Samtliga modeller skyddade mot efterbildningar enl. lagen av den 1 Juli 1926

Följande sifferbeteckningar avse nedanstående färger:

/53 = Felixgrönt glas
/61 = Brunt "
/71 = Antikblått "

The initials **Bh.** indicate articles composed by Artist **Elis Bergh**, and **Ol.** those composed by Artist **Edvin Ollers**. All models protected against imitations according to Law of 1st July, 1926

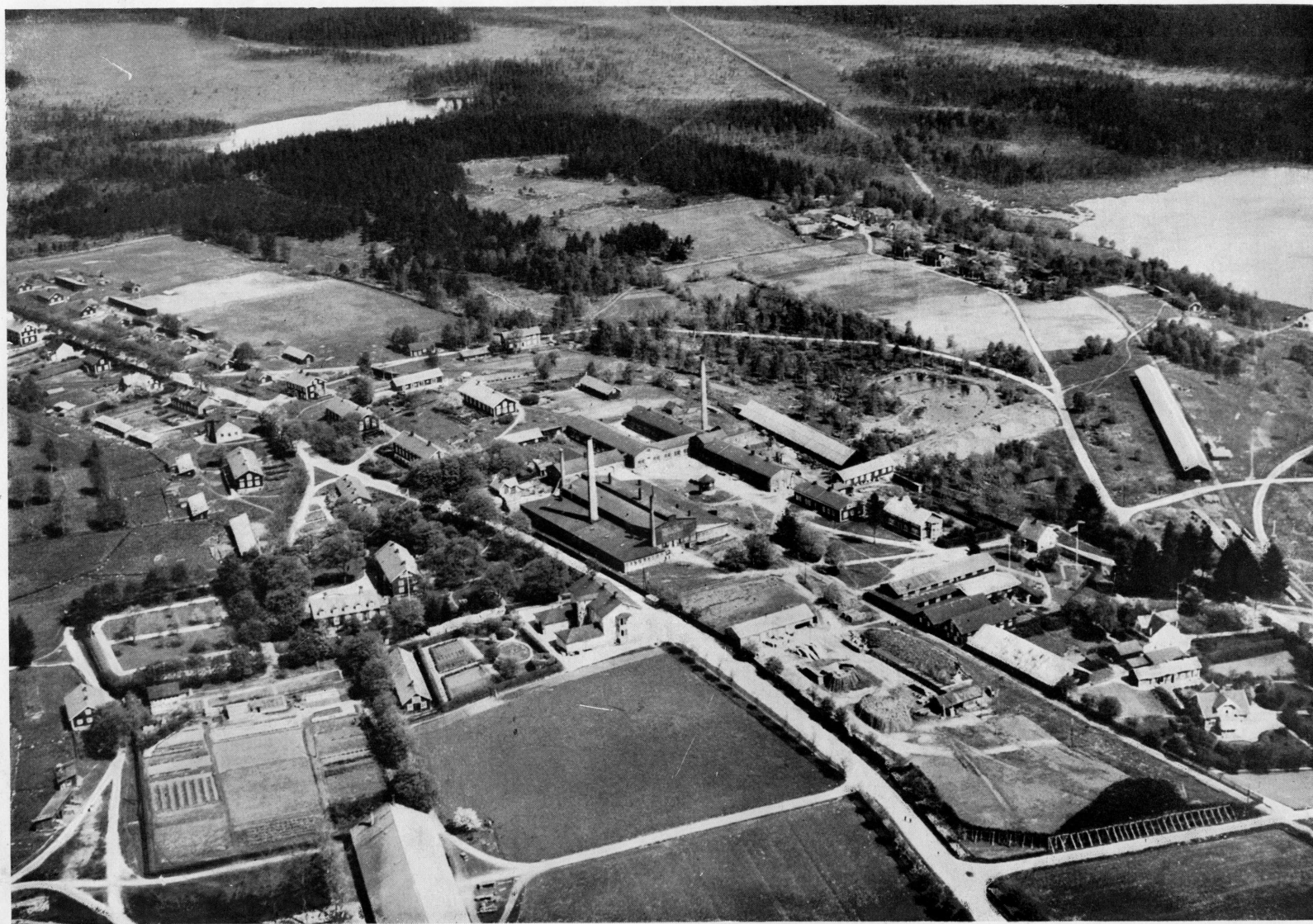
The undermentioned numerals indicate coloured glass, as follows:

/53 = Dark green glass
/61 = Brown "
/71 = Antique blue "



BRÖDERNA LAGERSTRÖM
Boktryckare
Stockholm
1933

Printed in Sweden



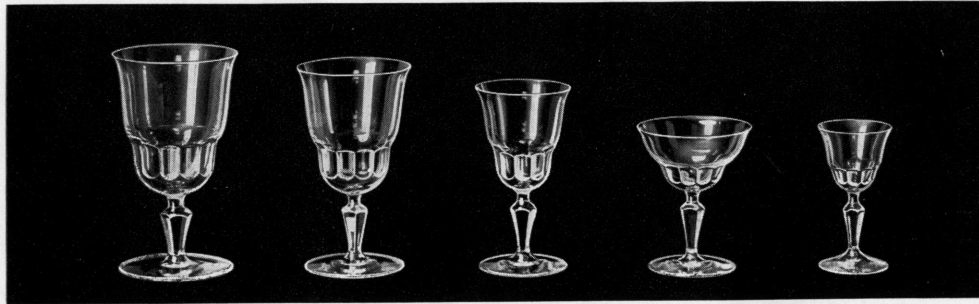
Flygvy över Kosta Glasbruk.

Bird's-eye view of the Kosta Glass Works.

Denomination	Quality	Page in catalogue	Page in price list	Code	Denomination	Quality	Page in catalogue	Page in price list	Code
Services.					Services.				
Agni	demi	1	1	SAA 01-29	Helga, plain stem	demi	9	16	SHA 01-47
Agnes, plain stem	demi	1	1	SAB 01-36	» cut stem	demi	9	16	SHB 01-38
» cut »	demi	1	2	SAC 01-14	» ordinary, plain stem	demi	10	17	SHC 01-35
Alexandra	full cr.	1	2	SAD 01-41	» cut stem	demi	10	17	SHD 01-14
Angelica	cryst.	2	3	SAE 01-37	» with »Blenda» border	demi	10	17	SHE 01-27
Argenta	full cr.	2	3	SAF 01-35	Heseler	full cr.	10	18	SHF 01-38
Asta	full cr.	3	4	SAG 01-38	Hultström	full cr.	11	18	SHG 01-43
Astrid, taillé gravure	demi	3	4	SAH 01-40	Irene	cryst.	11	19	SJA 01-10
» engraved border	demi	3	5	SAJ 01-18	Juno	demi	11	19	SJB 01-43
Automobil, gilt edge	full cr.	3	5	SAK 01-38	Juvel, engraved	full cr.	12	20	SJC 01-36
» cut stem only	full cr.	3	6	SAL 01-38	» without engraving	full cr.	12	20	SJD 01-36
» cut stem	demi	3	6	SAM 01-38	Kerstin, optic, etched border, cut stem	full cr.	12	20	SKA 01-38
Bell	cryst.	4	7	SBA 01-10	» optic, cut border, cut stem	full cr.	12	21	SKB 01-35
Brita, cut stem only	cryst.	4	7	SBB 01-40	» no optic, cut	full cr.	12	21	SKC 01-39
» pantograph etching	cryst.	4	8	SBC 01-40	Kohzi-Noor	full cr.	13	22	SKD 01-35
Bror, plain stem	demi	5	8	SBD 01-47	Kylix	cryst.	13	22	SKE 01-35
» cut stem	demi	5	9	SBE 01-36	Lalin, taper shape	full cr.	14	22	SLA 01-35
Börje, taillé gravure 8	demi	5	9	SBF 01-36	» round bowl	full cr.	14	23	SLB 01-36
Carl Johan, pantographed	full cr.	4	10	SCA 01-36	Laura	demi	14	23	SLC 01-36
» » taillé gravure	demi	4	10	SCB 01-14	Lina, etched	demi	14	24	SLD 01-40
Carl Mikael	cryst.	6	11	SCC 01-40	» cut	demi	15	24	SLE 01-36
Carmen	cryst.	6	11	SCD 01-15	Ludvig, engraving No. 1	demi	15	25	SLF 01-35
E. K., engraving 1926	cryst.	6	12	SEA 01-18	» » » 2	demi	15	25	SLG 01-36
E. K., plain	cryst.	6	12	SEB 01-36	» taillé gravure, plain stem	demi	15	26	SLH 01-35
Elis	full cr.	6	12	SEC 01-36	» » » cut stem	demi	15	26	SLJ 01-14
Elsa	full cr.	7	12	SED 01-10	Margareta	full cr.	16	27	SMA 01-35
Fanny	demi	7	13	SFA 01-37	May, cut stem only	full cr.	16	27	SMB 01-36
Felix	full cr.	7	13	SFB 01-37	» decor 387	demi	16	27	SMC 01-37
Filius, cut stem	demi	8	14	SFC 01-14	Odelberg	full cr.	16	28	SOA 01-45
» plain stem	demi	8	14	SFD 01-27	Odin, taillé gravure 4	demi	17	28	SOB 01-40
Florence	full cr.	8	15	SFE 01-10	» plain	demi	17	29	SOC 01-37
Fyrväppling	full cr.	9	15	SFF 01-41	Optic	demi	17	29	SOD 01-35
Georgian	full cr.	9	15	SGA 01-10					

Denomination	Quality	Page in catalogue	Page in price list	Code	Denomination	Page in catalogue	Page in price list	Code	
Services.					Miscellaneous.				
Palace	full cr.	17	29	SPA 04-37	Ash trays	46	40	AA 001-006	
Pelikan	full cr.	18	29	SPB 01-35	Bowls	54-60	40-41	SB 001-088	
Piccadilly	full cr.	18	30	SPC 01-10	Brandy (snaps) glasses	45-46	41	BE 001-026	
Regin, frosted edge	demi	19	30	SRA 01-35	Candlesticks	52	42	LB 001-006	
» decor Lotus	demi	19	30	SRB 01-15	Cheese bells	52-53	42	OA 001-012	
» pantographed	demi	19	30	SRC 01-09	Cocktail glasses	46	42	CA 001-006	
Revy 1, gilt edge	full cr.	20	31	SRD 01-35	Cognac bowls	47-48	42	CB 001-012	
Revy 2	cryst.	19	31	SRE 01-35	Confections bowls	53-55	43	KC 001-019	
Samsøe, gilt edge	demi	21	31	SSA 01-36	Cups	27-50	43	PA 001-013	
Silenus	full cr.	21	32	SSB 01-21	Custard glasses	53	43	PB 001-002	
Siv	cryst.	22	32	SSC 01-39	Decanters for Brandy, Cognac & Whisky	20-27 44-45 63-64	43-44	KB 001-060	
Skytte	demi	21	33	SSD 01-38	Finger bowls	53	44	SC 001-002	
Star, cut stem	demi	22	33	SSE 01-35	Flower glasses	28-43	45-48	BA 001-194	
» plain stem	demi	22	33	SSF 01-36	Flower holders	44	48	BB 001-003	
Stern	demi	22	34	SSG 01-35	Hock bowls	53	48	RA 001-003	
Tre Byttor	demi	24	34	STA 01-35	Ink stand	52	48	BC 001	
Three Roses	full cr.	23	34	STB 01-43	Jardinières	53-54	48	JA 001-009	
Ulle, plain stem	demi	24	35	SUA 01-39	Jugs	51-52	48-50	KA 001-081	
» cut stem	demi	24	35	SUB 01-35	Liqueur decanters	44-48	50	LA 001-009	
U. S. A.	demi	24	35	SUC 01-36	Liqueur bowls	47-48	50	LC 001-011	
Valborg, with border	demi	25	36	SVA 01-36	Plates	21-28	50-51	AB 001-035	
» cut stem only	demi	25	36	SVB 01-35	Puff boxes	44	51	BD 001-014	
» with »Juno» border	demi	25	37	SVC 01-36	Salad bowls	53	51	SA 001-016	
Vasa	demi	26	38	SVE 01-25	Sugar sets	60	51	SD 001-008	
Victrix	full cr.	25	39	SVF 01-41	Tea Jars	4, 9	52	TA 001-002	
Vincent, shape Ahrén	full cr.	38	38	SVG 01-36	Toilet bottles with ups	62	52	VA 001-029	
» » Nov. 3.	full cr.	27	38	SVH 01-39	Toilet sets	60-62	52-54	TB 001-056	
Waldensee	full cr.	25	37	SVD 01-39	Trays	48-50	54	FA 001-012	
Yakima	full cr.	27	39	SYA 01-10	Tumblers	49	54	DA 001-022	
					Whisky goblets	50, 64	55	VB 001-012	
					Wine decanters	64	55	VC 001-013	

Agi. Bh. Code: SAA 01—29



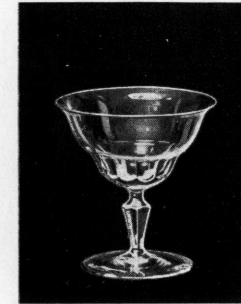
09

08

03

04

01



10

Alexandra. Graverad. Code: SAD 01—41
» Engraved.

Agnes. T. G. Code: SAB 01—36
» Taillé Gravure.



27

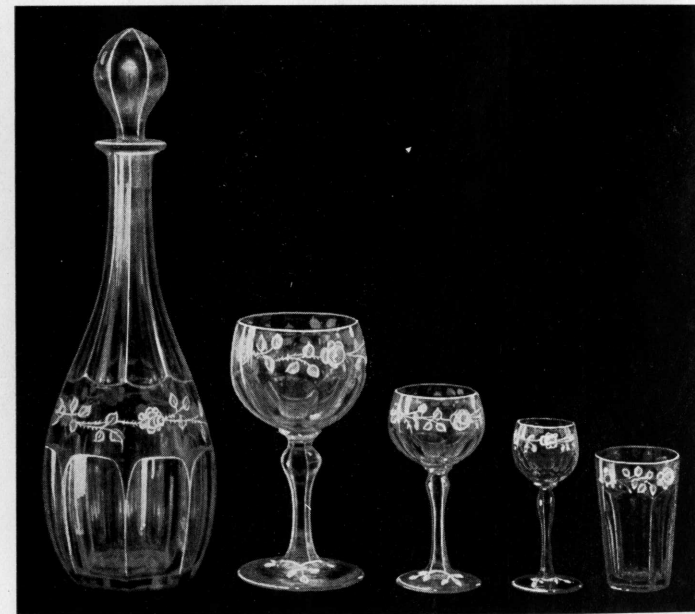
09

06

03

01

15



23

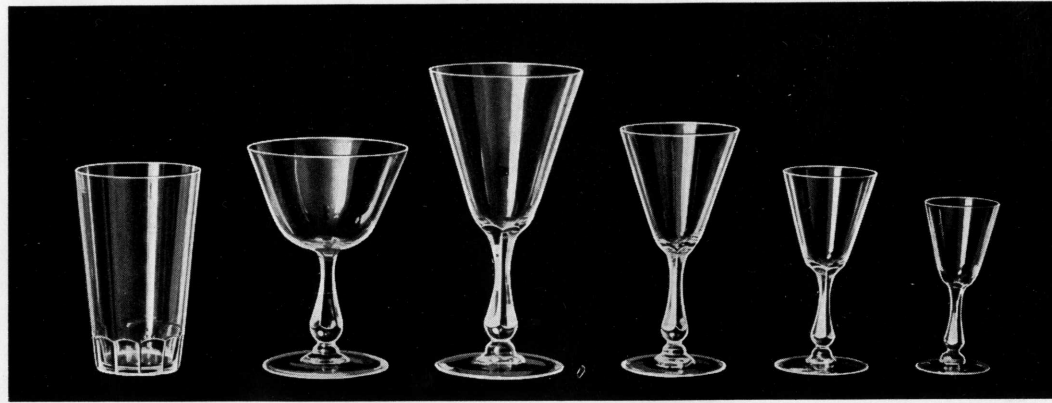
09

06

01

15

Angelica. Code: SAE 01—37



17

10

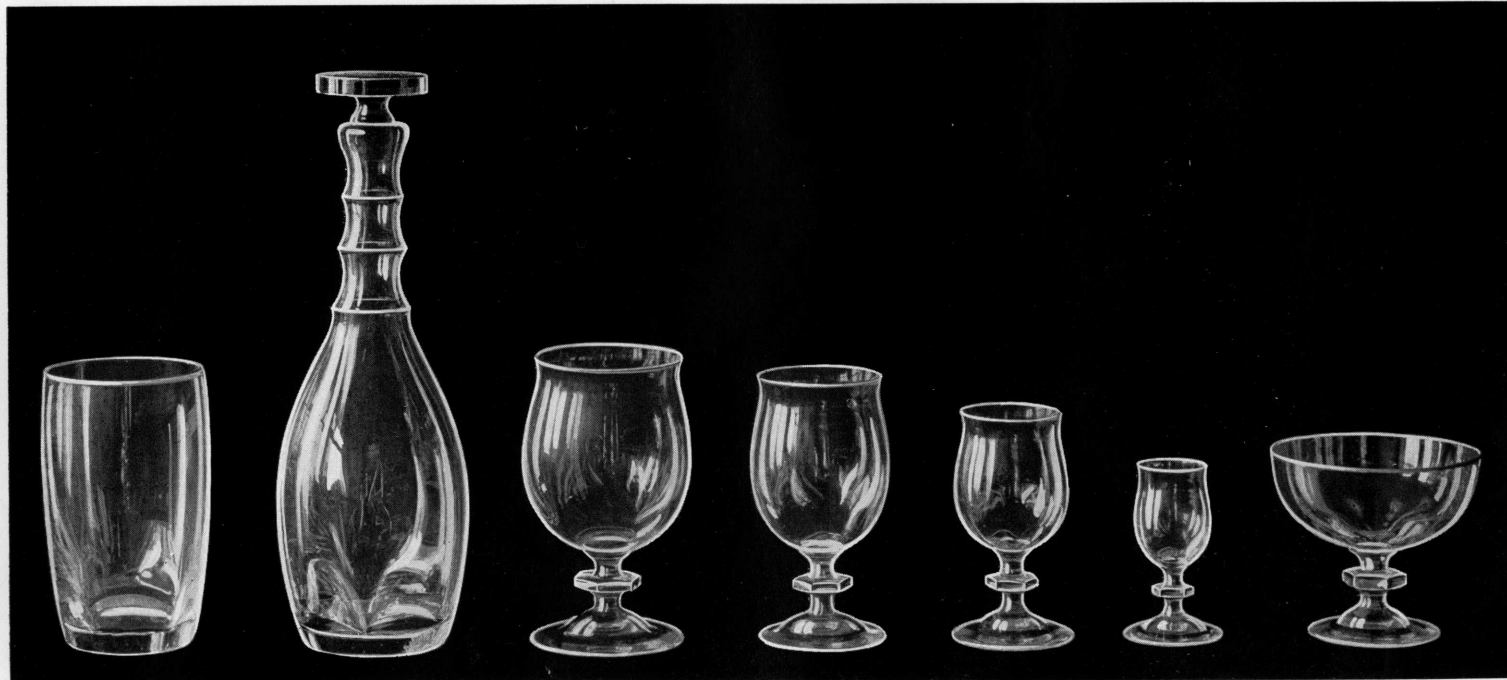
09

08

05

01

Argenta. Bh. Code: SAF 01—35



18

35

09

08

06

01

10

Asta. Code: SAG 01—38



21 08 06 03 14 15

Astrid. Grav. bård. Code: SAJ 01—18
» Engraved border.



09 08 10 15

Automobil. Med guldkant. Code: SAK 01—38
» Gilt edge.

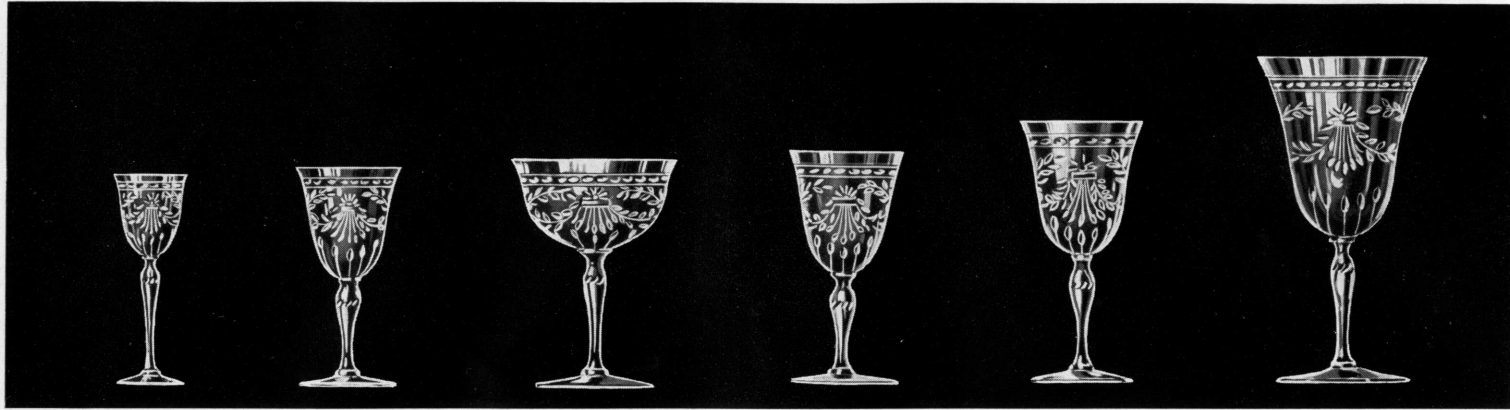
Astrid. T. G. Code: SAH 01—40
» Taillé Gravure.



09 10 08 14 01 15



22 09 10 06 01 15



01

02

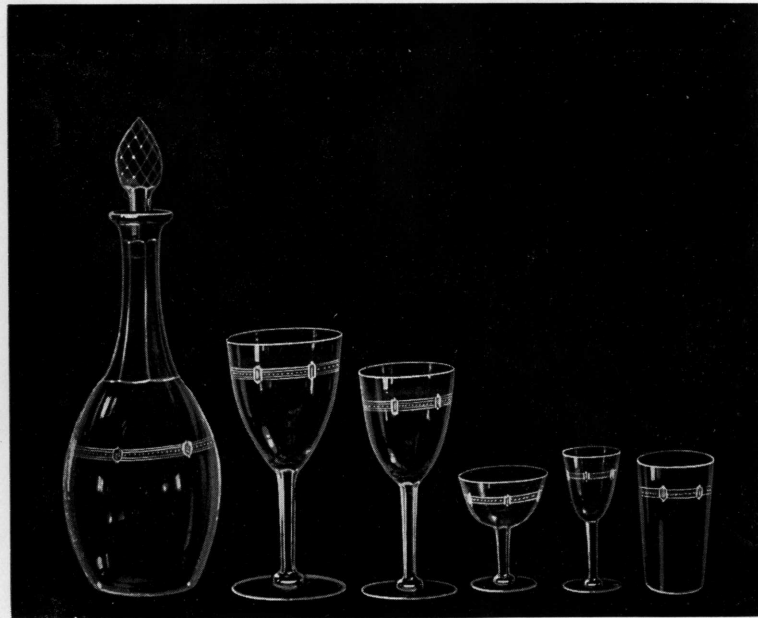
10

06

08

09

Brita. Pant. Code: SBC 01—40
» Pantographed.



22

08

06

04

01

15

Carl Johan. Pant. Code: SCA 01—36
» Pantographed.



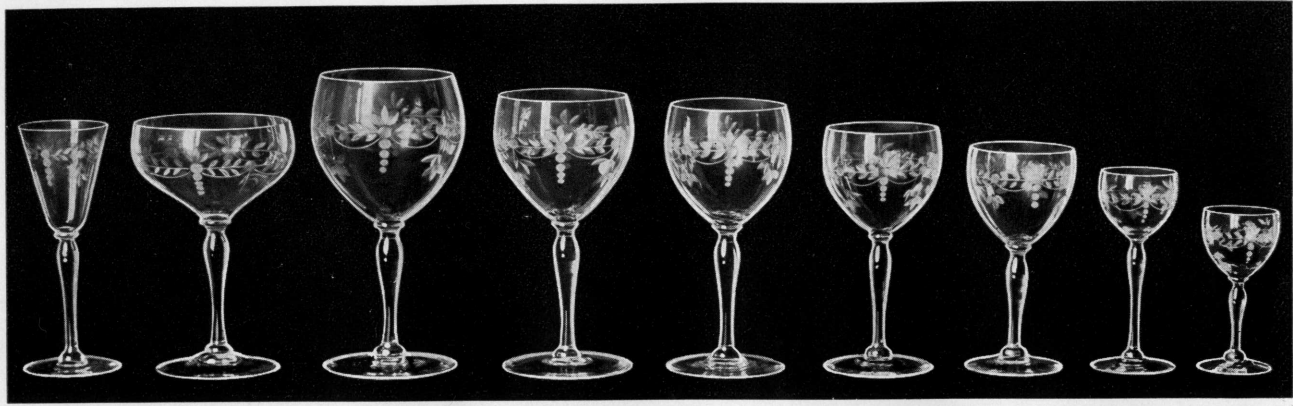
22

09

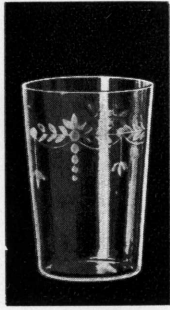
10

01

15

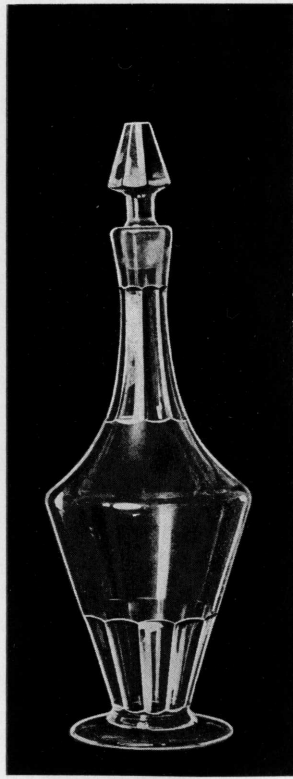


14 10 09 36 08 06 03 35 01

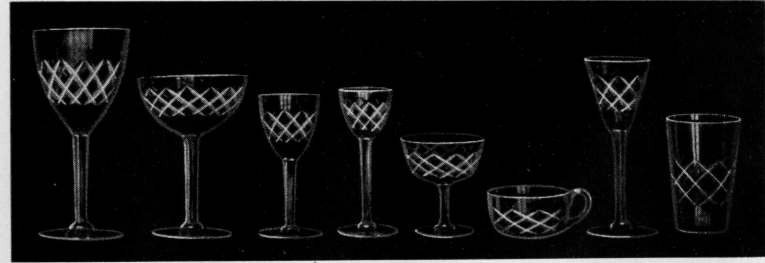


17

Bror. Code: SBD 01—47

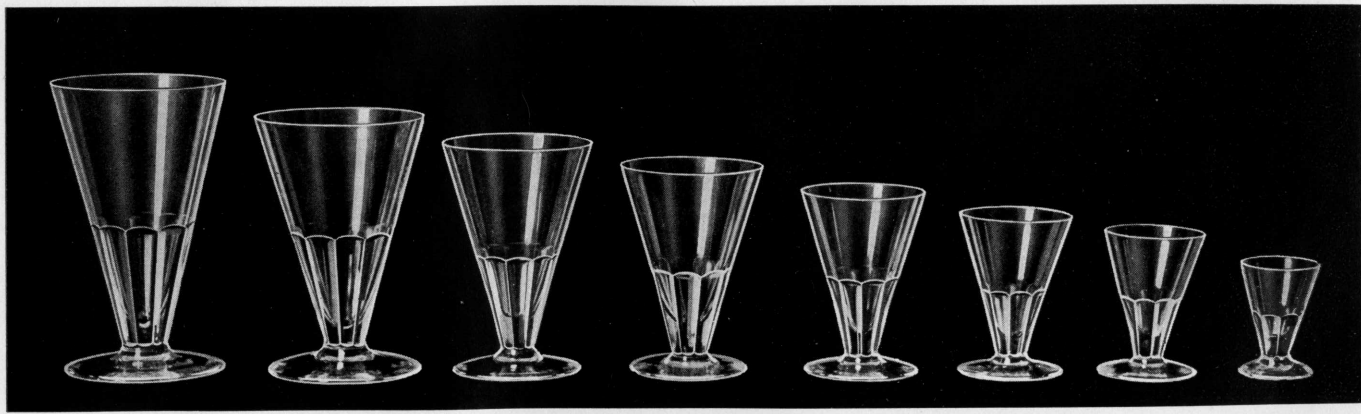


40



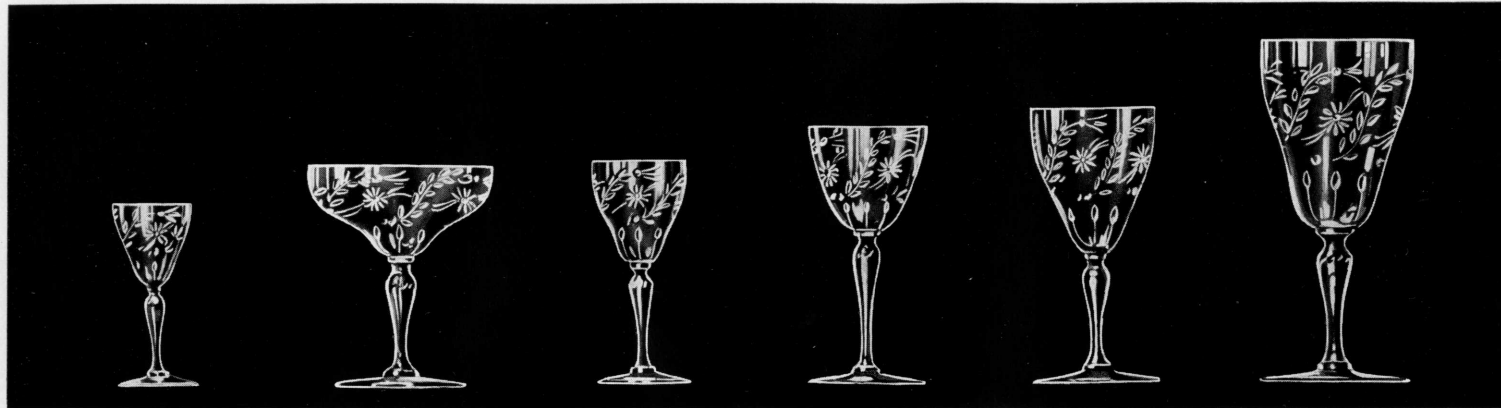
08 10 02 01 04 12 14 15

Carl Mikael. Bh. Code: SCC 01—40



36 09 08 07 06 03 02 01

Carmen, dec. 785. Code: SCD 01—15



01

10

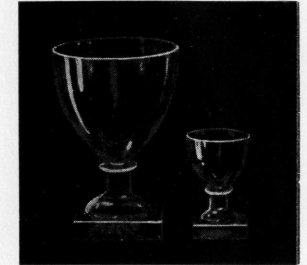
02

03

06

09

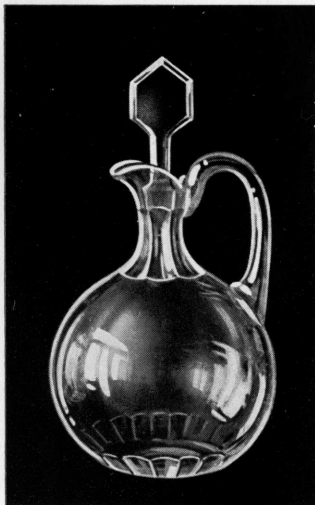
F. K. Slät.
» » Plain.
Code: SEB 01—36



09

01

Elis. Bh. Code: SEC 01 - 36



29



15

18

09

06

03

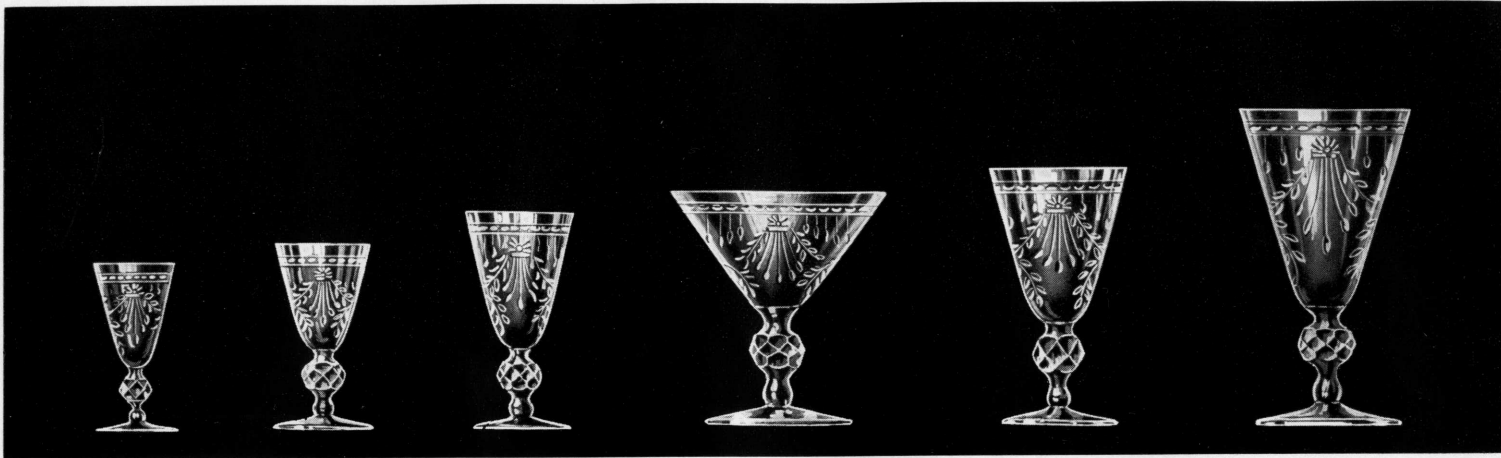
14

10

04

01

Elsa, dec. 669. Code: SED 01—10



01

02

03

10

08

09

Fanny. Slipad. Code: SFA 01—37
» Cut.



22

09

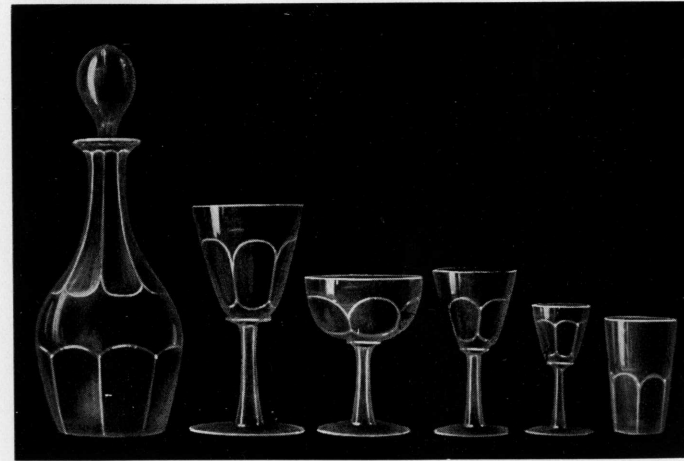
10

14

01

15

Felix. Code: SFB 01—37



21

08

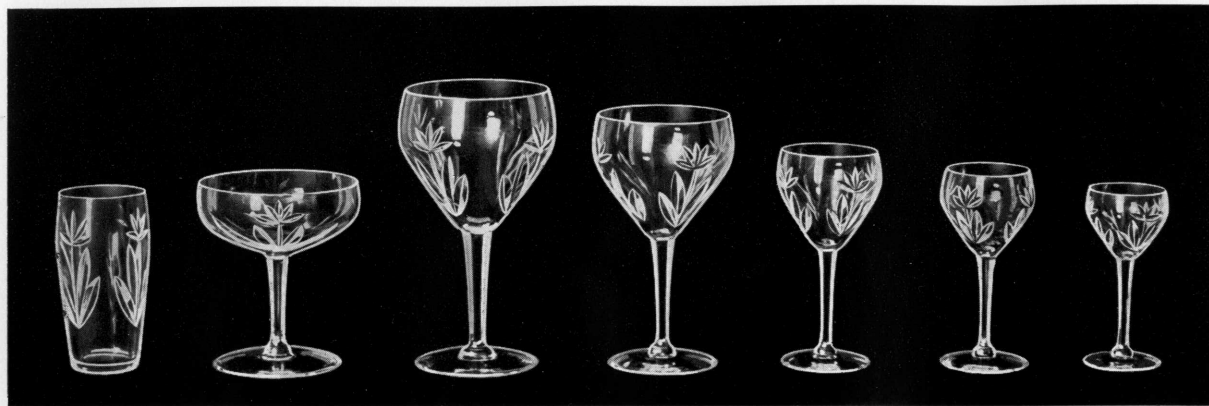
10

02

01

15

Filius. Bh. Slip. ben. Code: SFC 01—21
» Cut stem.



15

10

09

08

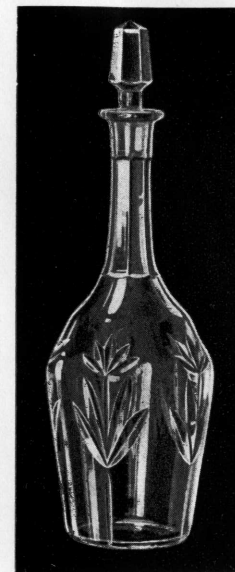
03

02

01

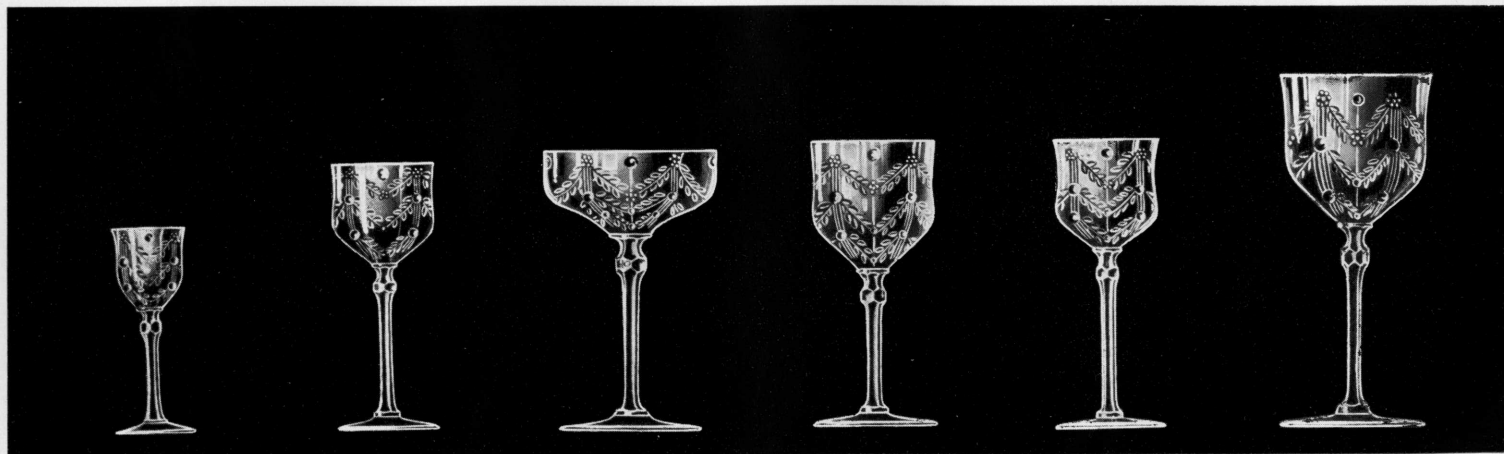


15



21

Florence, dec. 629. Code: SFE 01—10



01

02

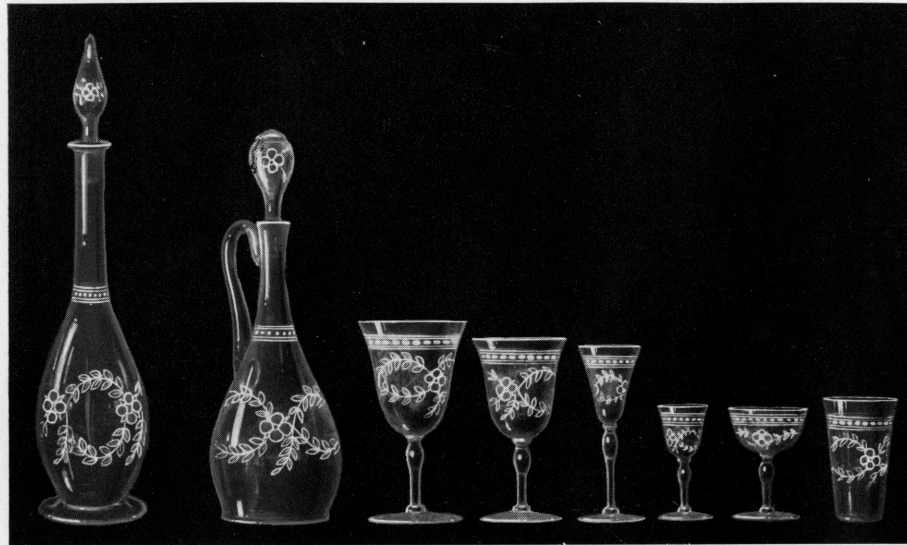
10

08

03

09

Fyrväppling. Code: SFF 01—41



37 21 09 08 14 01 04 15

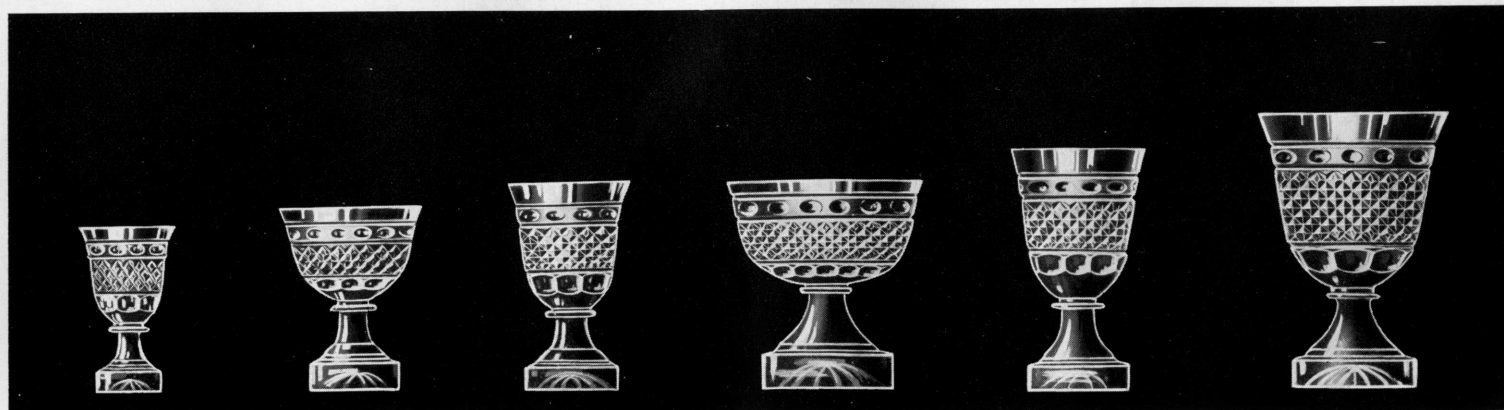
Helga. Slätt ben. Code: SHA 01—47
» Plain stem.



22 09 05 01 14 15

Karaff.
Decanter.
Code: KB 006

Georgian, dec. 767. Code: SGA 01—10

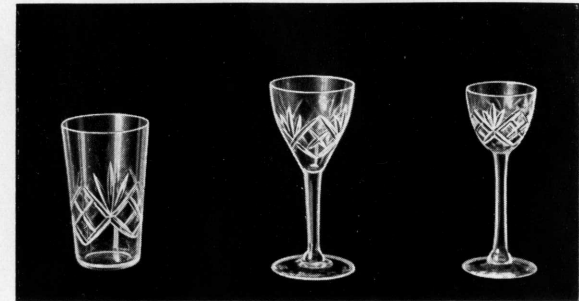


01 04 03 10 08 09

Helga. Ordinär. Code: SHC 01—35
 » Ordinary.

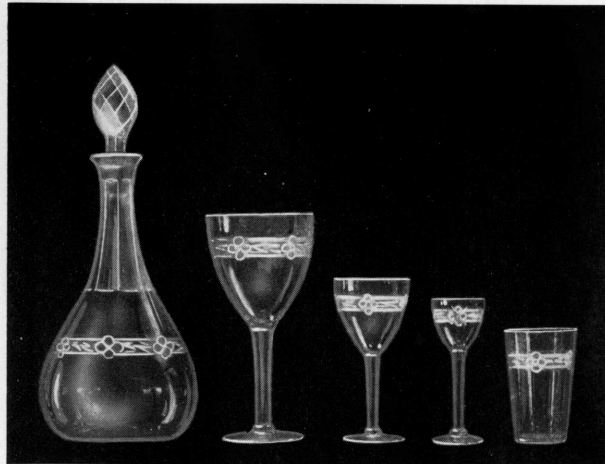


10 09 08 06 03



15 02 01

Helga. Med Blendabård. Code: SHE 01—27
 » With Blenda border.

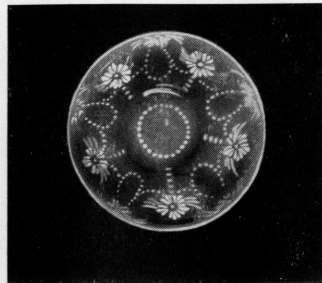
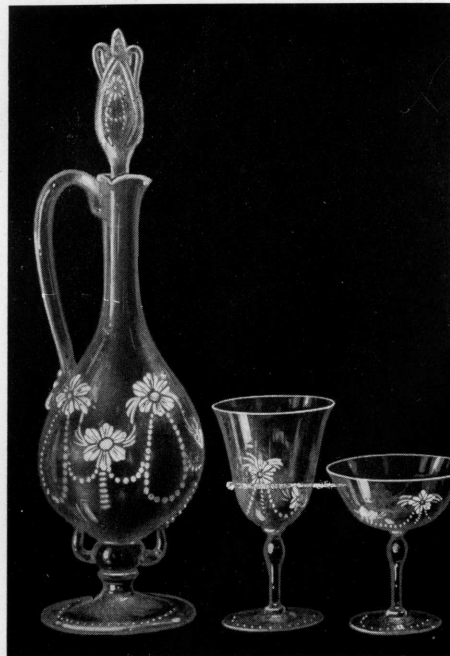


21 09 02 01 15

Heseler. Med S. B. Code: SHF 01—38
 » With star bottom.



25 09 08 10 04 15 01 14

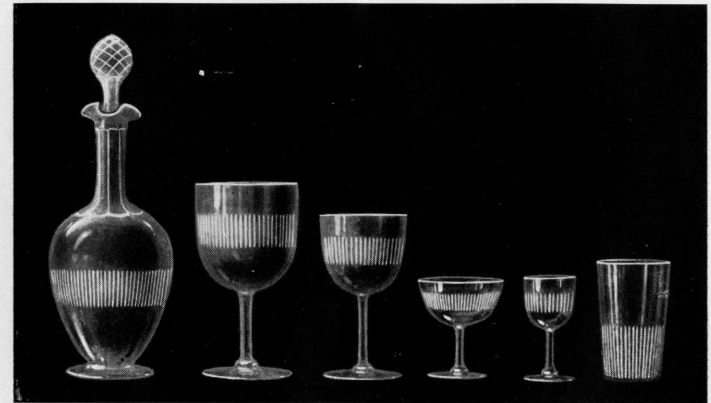


Assiett. Plate. Code: AB 007



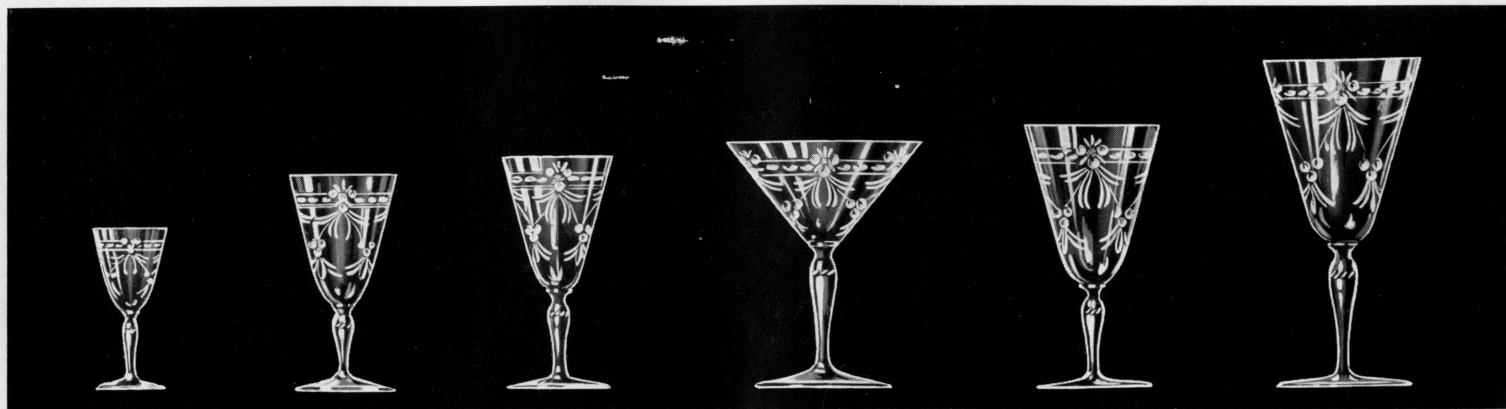
25 09 10 06 05 35 15

Juno. Code: SJB 01—43

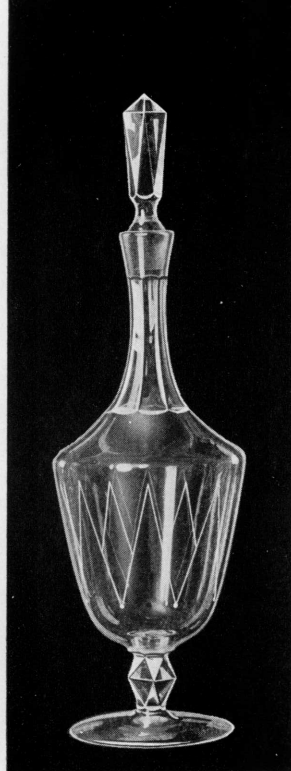


21 09 06 04 01 15

Irene, dec. 430. Code: SJA 01—09



01 02 03 06 08 09



21

Juvel. Bh. Graverad. Code: SJC 01—36
» Engraved.



03

08

09

14

15

10

12

Kerstin. Etsad. Code: SKA 01—38
» Etched.



21

09

10

05

01

14

15

Kerstin. Slipad. Code: SKC 01—39
» Cut.



21

09

08

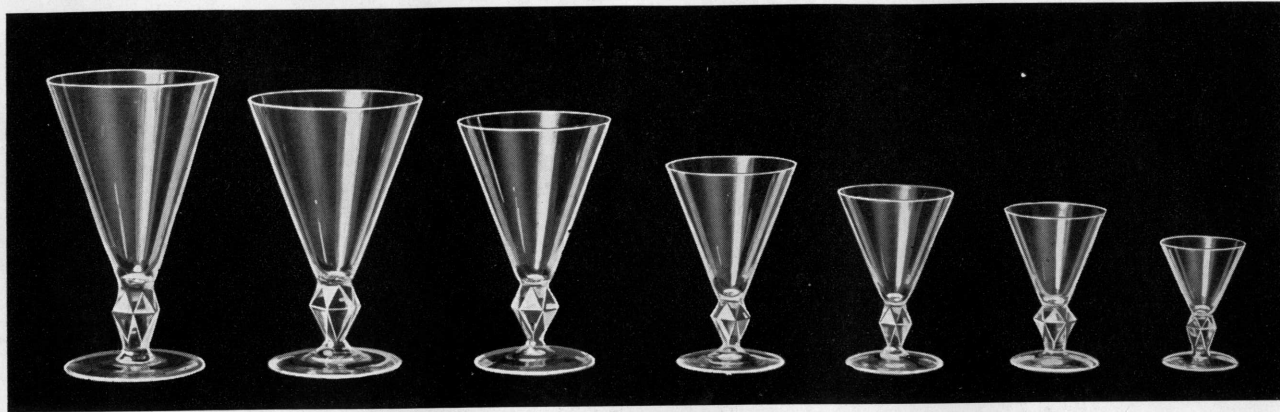
05

01

35

15

14



09

35

08

06

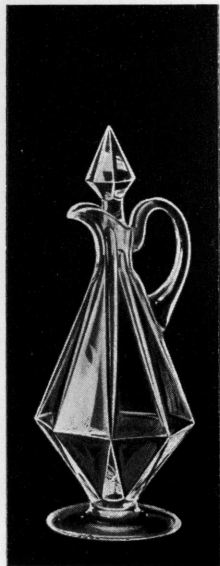
03

02

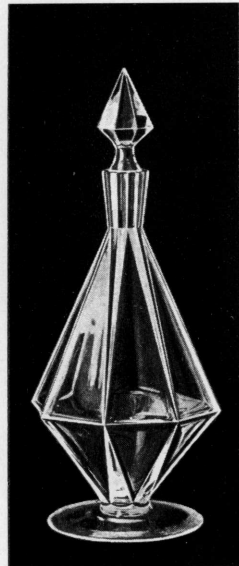
01



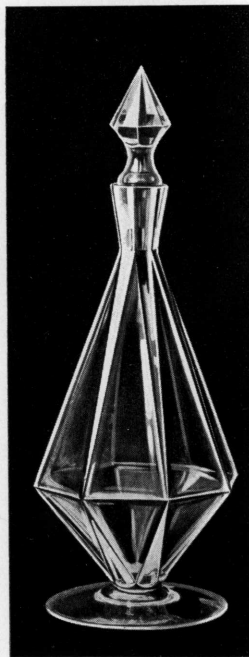
Koh-i-noor. Bh.



24



21



23

Koh-i-noor. Bh.

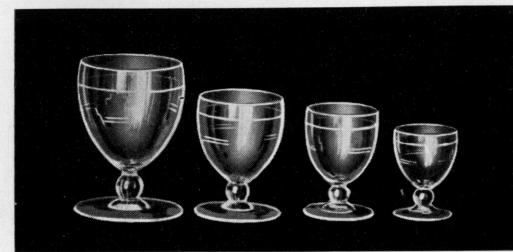
Kylix. Bh. Code: SKE 01—35



10

09

15

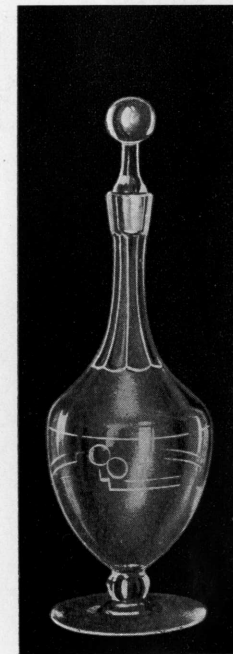


08

03

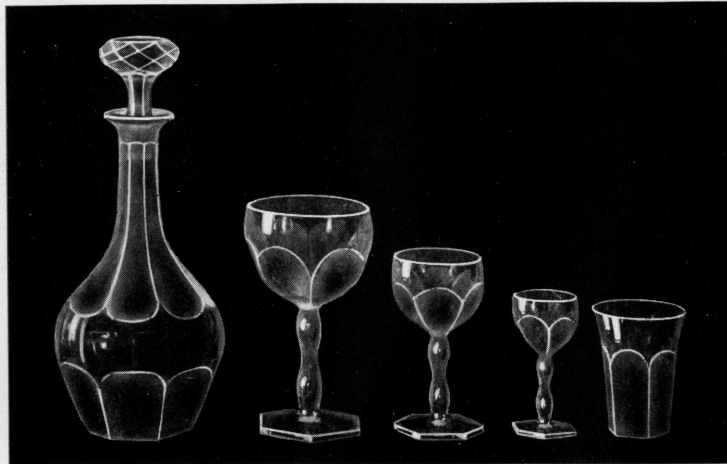
02

01



21

Lalin. Kupig. Code: SLB 01—35
 » Round bowl.



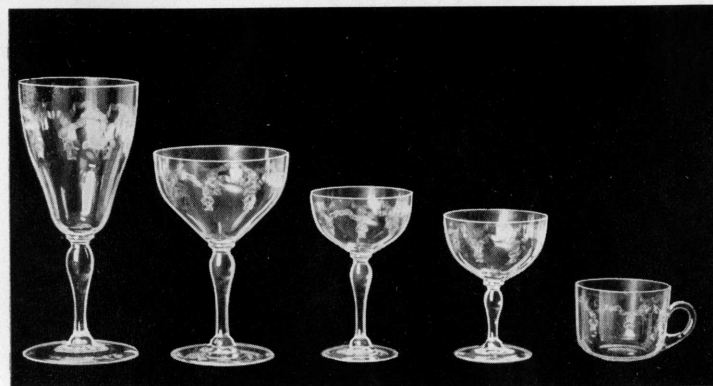
21 09 05 01 15

Lalin. Spetsig. Code: SLA 01—35
 » Taper.

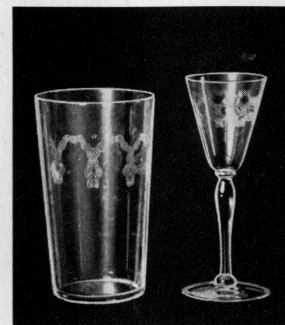


21 09 10 06 01 15

Laura. Etsad. Code: SLC 01—36
 » Etched.



09 10 05 04 12

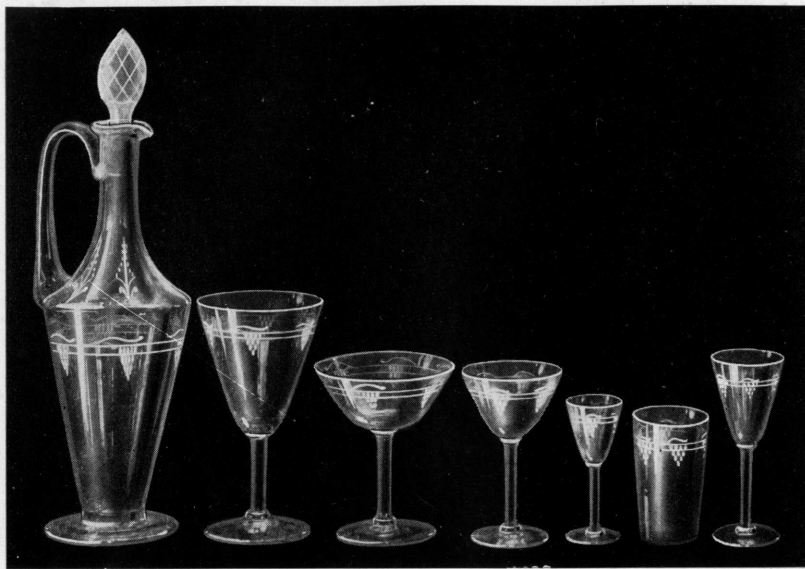


15 14

Lina. Etsad. Code: SLD 01—40
 » Etched.



21 09 08 03 01 14 15



24 09 10 05 01 15 14

Ludvig. Graverad 2. Code: SLG 01—36
» Engraved 2.



21 09 04 01 14 15

Lina. Slipad. Code: SLE 01—36
» Cut.



21 09 08 04 01 14 15

Ludvig. T. G. Code SLH 01—35
» Taillé gravure.



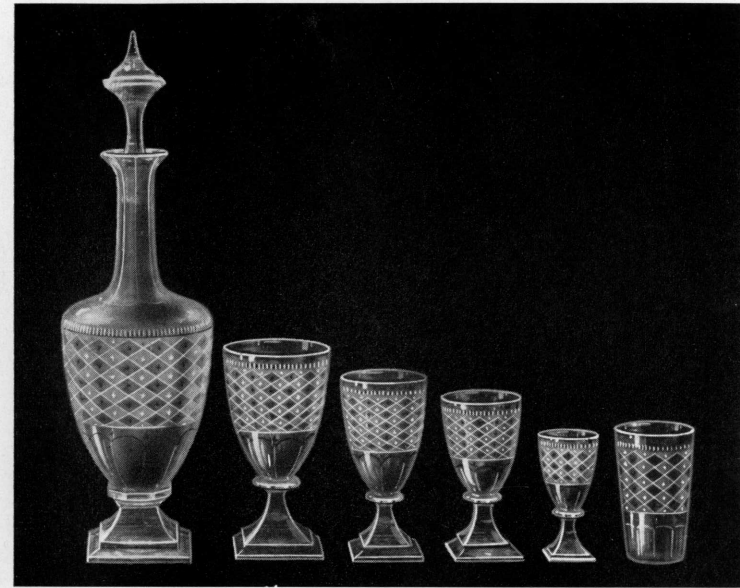
21 09 10 04 01

Margareta. Graverad. Code: SMA 01—35
 » Engraved.



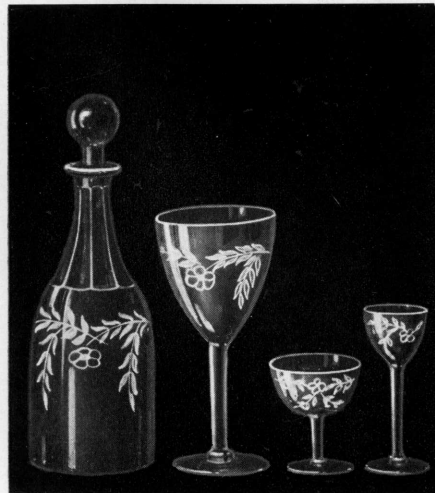
21 10 08 02 01

Odelberg. Med guld. Code: SOA 01—45
 » With gold.



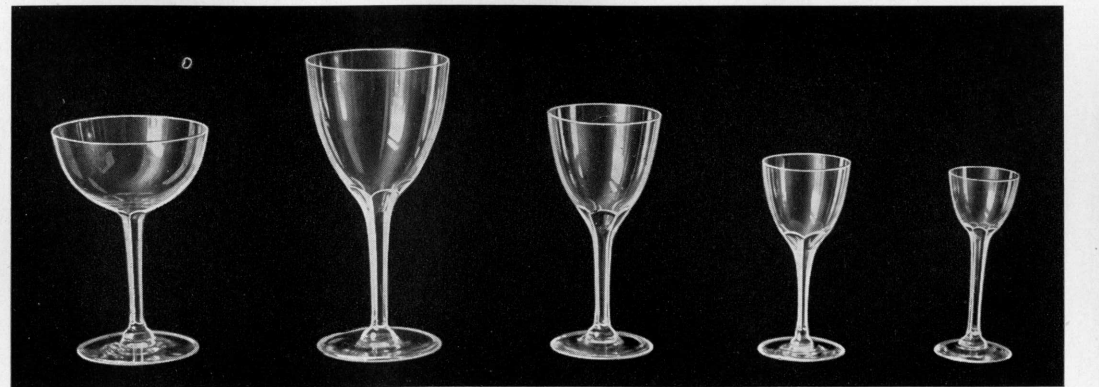
39 09 08 03 01 15

May. 387. Code: SMC 01—37



36 09 04 01

May. Endast benslip. Code: SMB 01—36
 » Cut stem only.

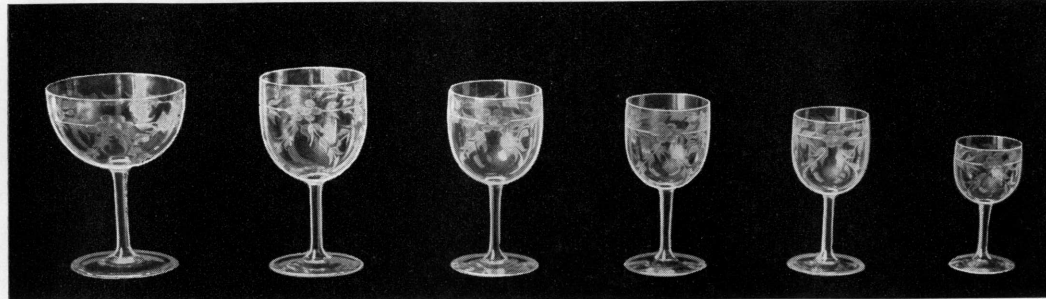


10 09 06 02 01 15

Optic, dec. 386. Code: SOD 01—35



09



10

08

06

03

02

01



15

Odin. Slät.
» Plain.
Code: SOC 01—37

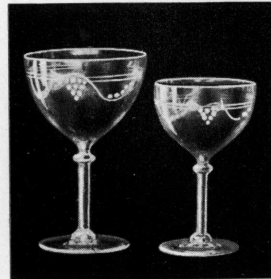


02

14

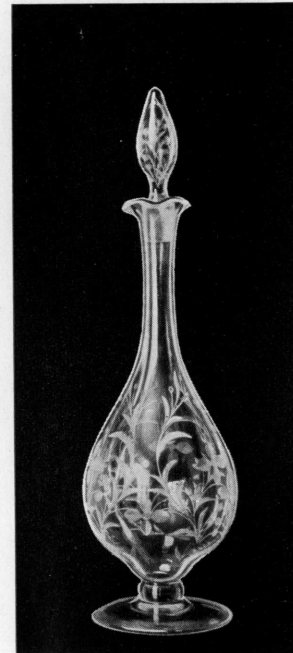
15

Odin. T. G. 4.
» Taillé gravure 4.
Code: SOB 01—40



09

08



21

Palace. T. G.
» Taillé gravure.
Code: SPA 04—37



37

36



14

15

09

35

08

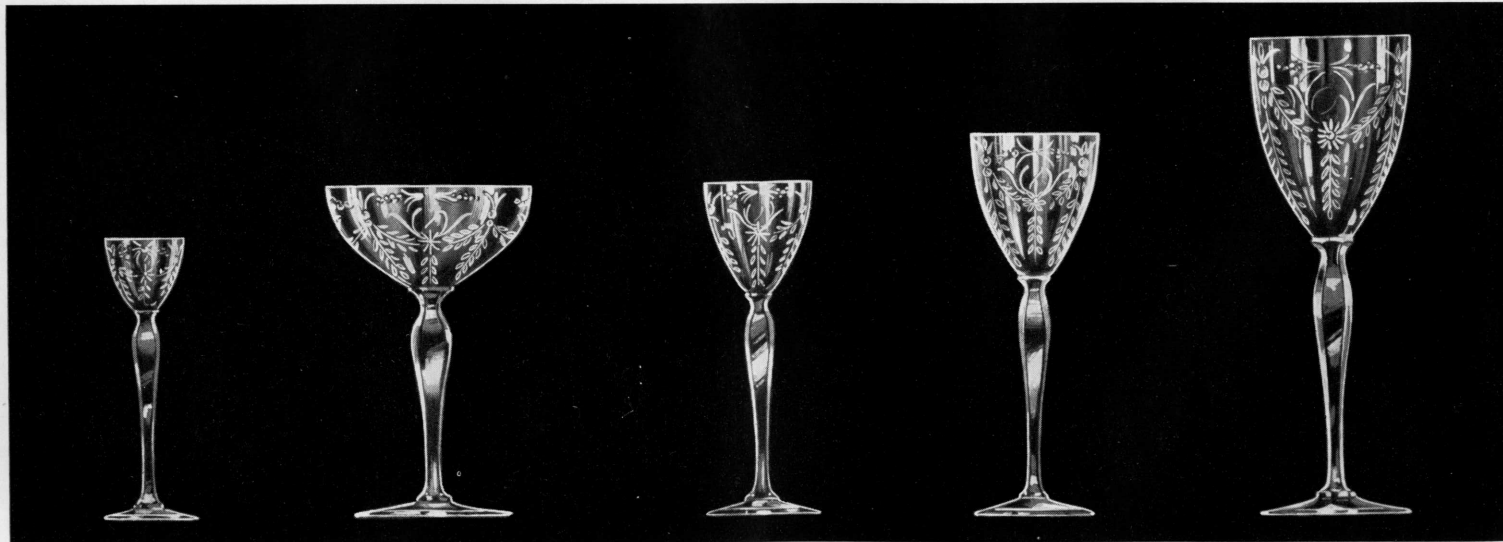
06

03

02

01

Piccadilly. dec. 797. Code: SPC 01—10



01

10

02

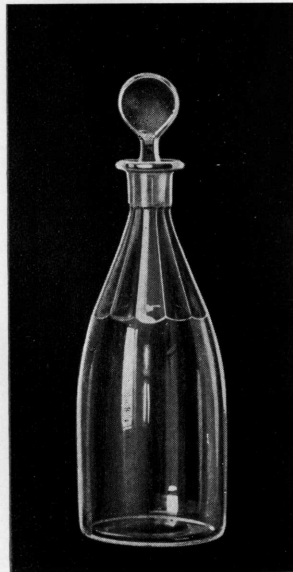
03

09

Regin. Bh. Frosted edge. Code: SRA 01—35

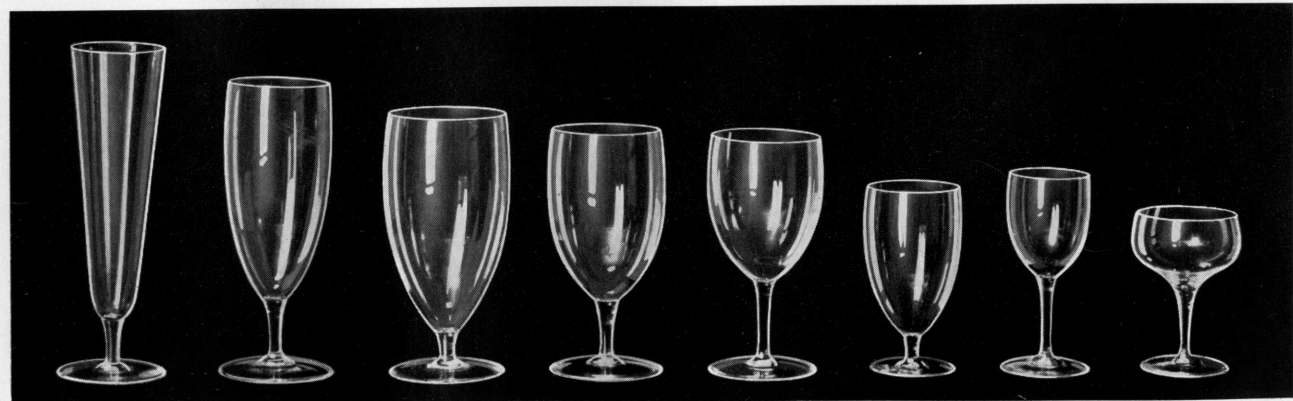


09 08 02 01

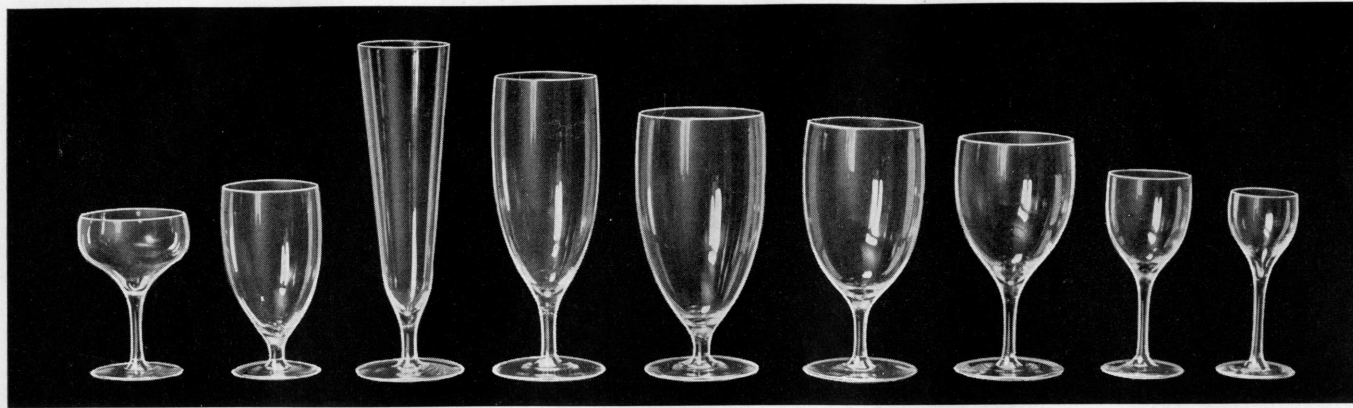


20

Revy 2. Bh. Code: SRE 01—35



35 09 08 15 02 01



04

15

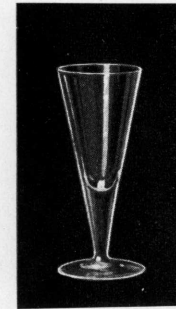
35

09

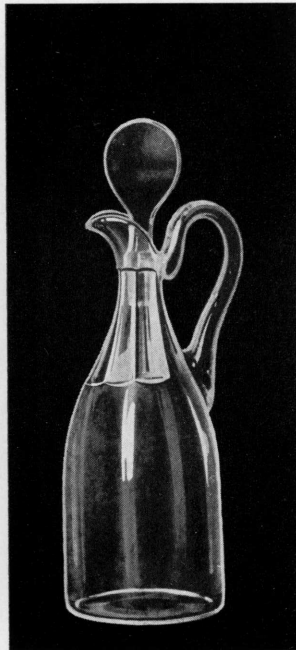
08

05

01



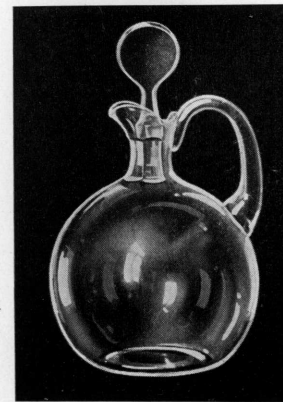
14



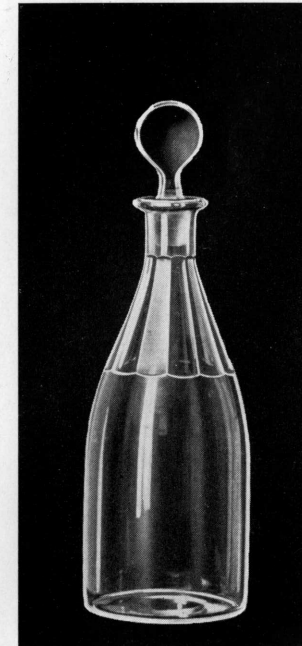
Likörkaraff. Code: LA 003.
Liqueur decanter.



Karaff. Code: KB 015.
Decanter.

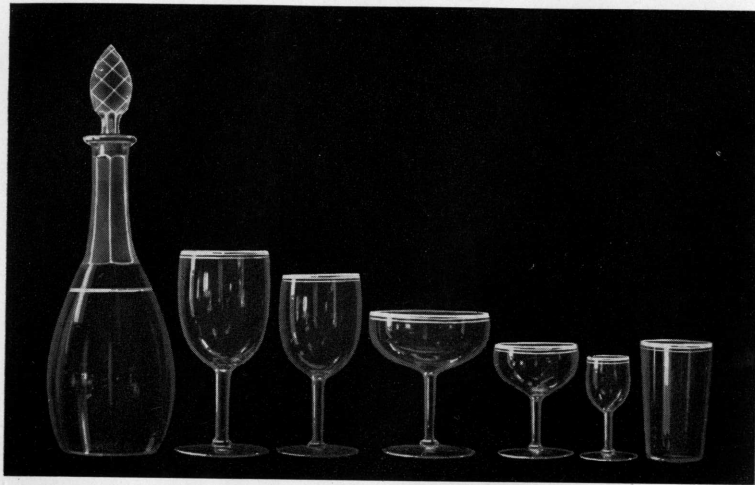


28



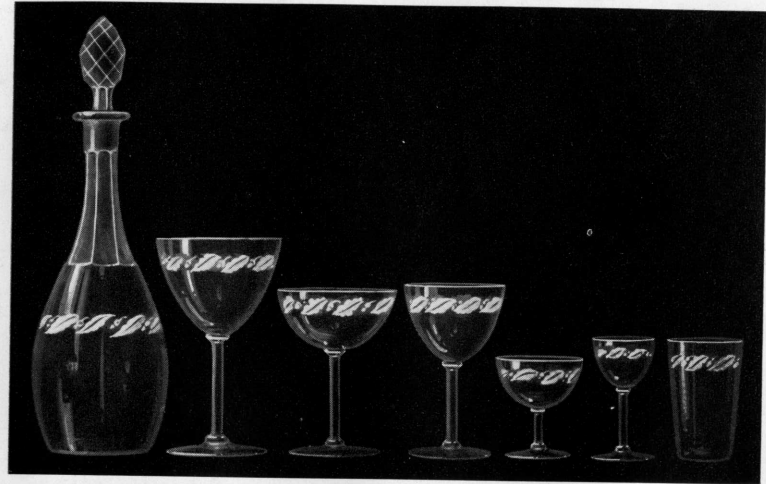
20

Samsöe. Med guldkant. Code: SSA 01—36
 » Gilt edge.

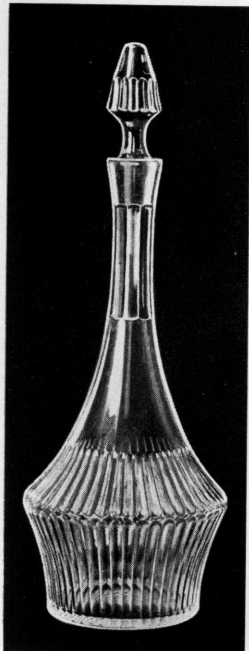


22 09 08 10 04 01 15

Skytte. Code: SSD 01—38

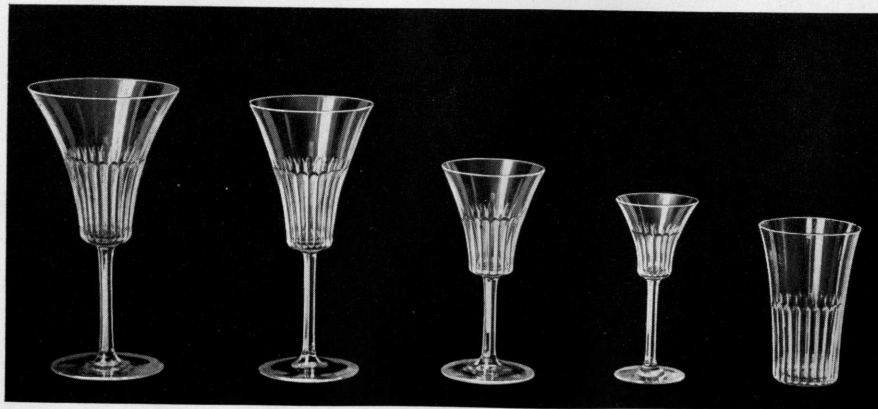


22 09 10 06 04 01 15



20—21

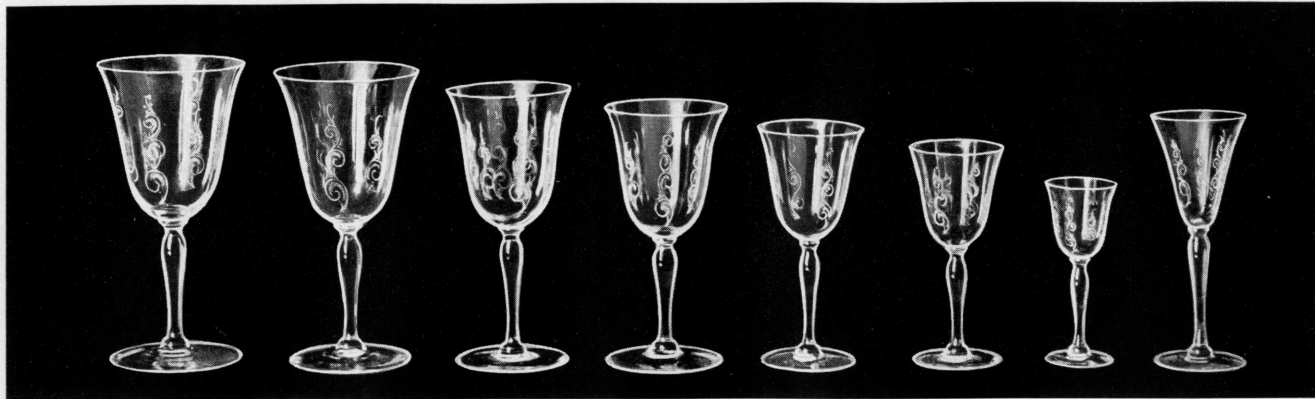
Silenus. Bh. Code: SSB 01—21



08 06 05 01 15



09 10 04



09

36

08

06

03

02

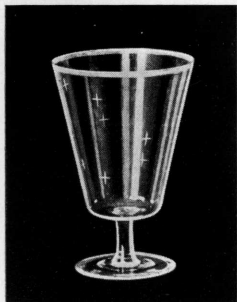
01

14

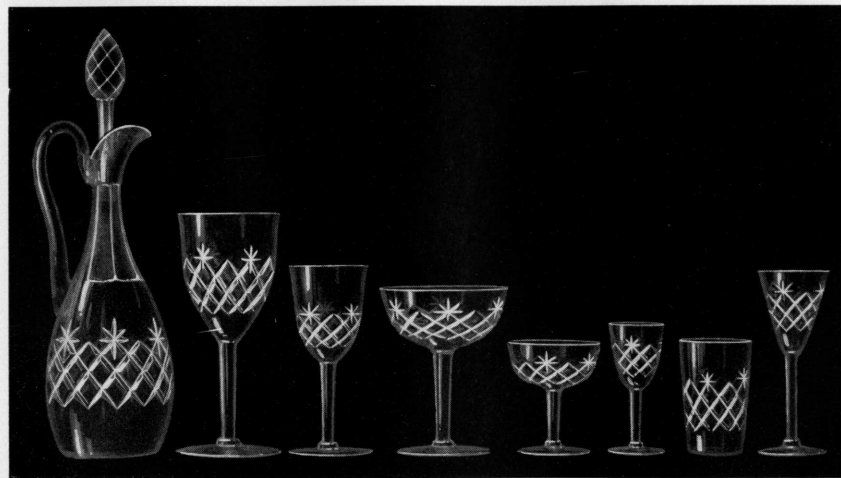


15

Stern.



35



25

09

06

10

04

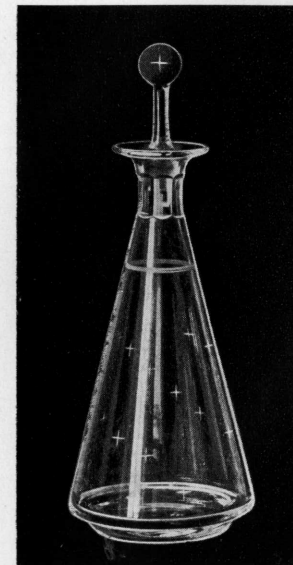
01

15

14

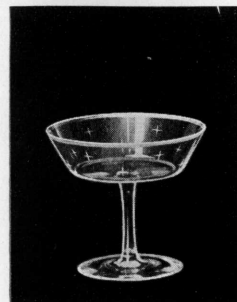
Star. Code: SSF 01—36

Stern.



21

Stern. Bh. Code: SSG 01—35



10



09

08

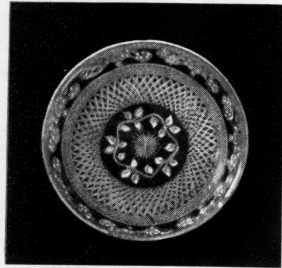
06

03

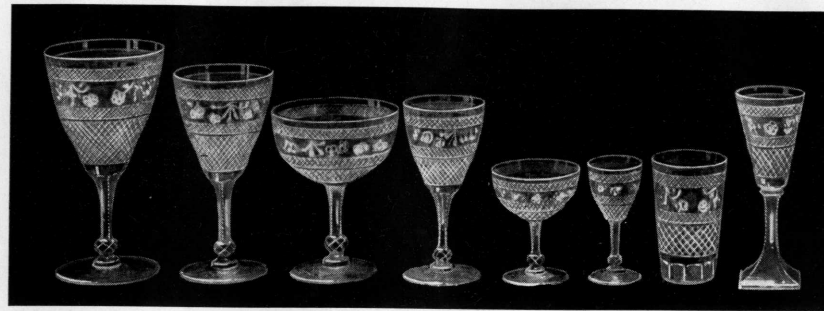
02

01

Tre Rosor. Graverad. Code: STB 01—43
Three Roses. Engraved.

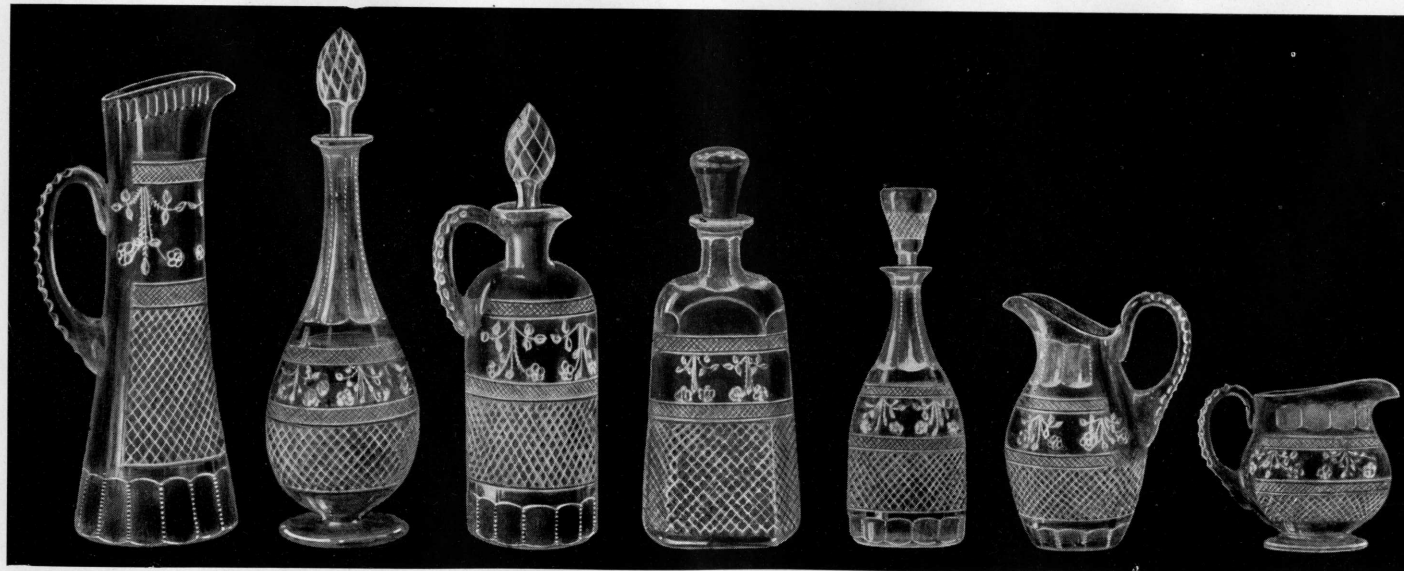


Assiett. Code: AB 024—25
 Plate.



09 08 10 06 04 01 15 14

19



43

21

Karaffer.
 Decanters.
 Code: KB 018. KB 017

40



21

09

35

08

06

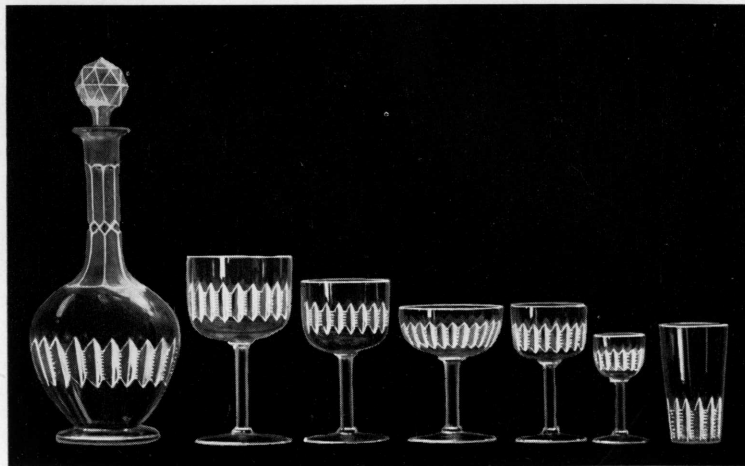
05

02

01

Ulle. Slätt ben. Code: SUA 01—39
» Plain stem.

U. S. A. Optic. Code: SUC 01—36
» Grönt ben & fot.
» Green stem & foot.



21

09

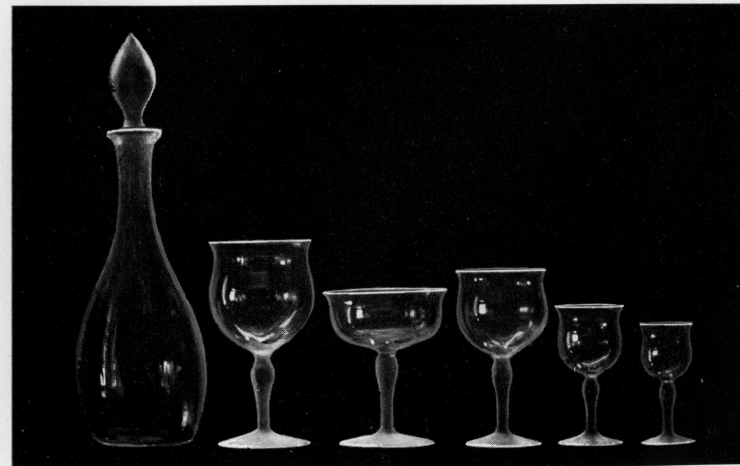
08

10

03

01

15



21

09

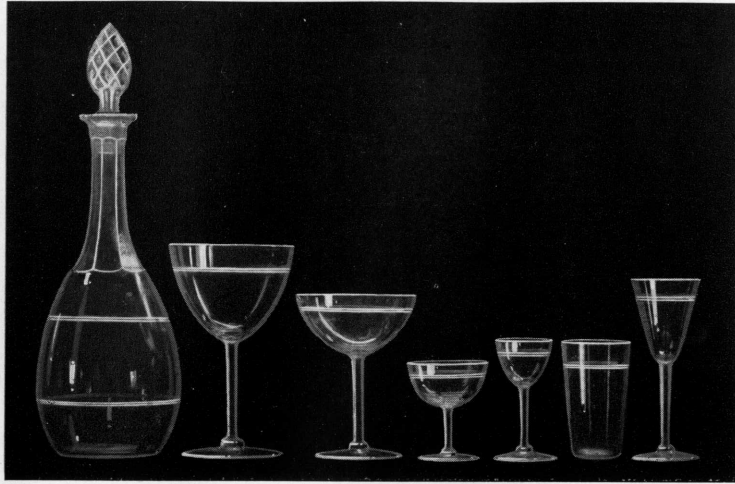
10

08

02

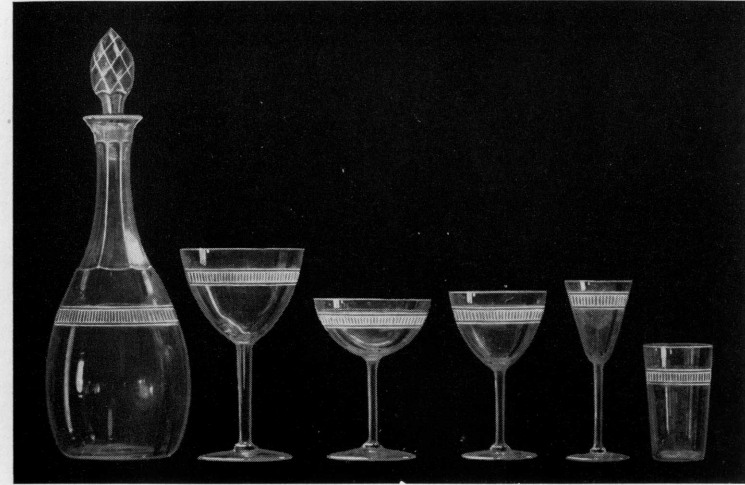
01

Valborg. Med bård Code: SVA 01—36.
» With border.



22 09 10 04 01 15 14

Valborg. Med Junobård. Code: SVC 01—36.
» With Juno border.



22 09 10 06 14 15

Waldersee. Code: SVD 01—39.



23 09 10 04

Victrix. Med S. B. Code: SVF 01—41.
» With star bottom.

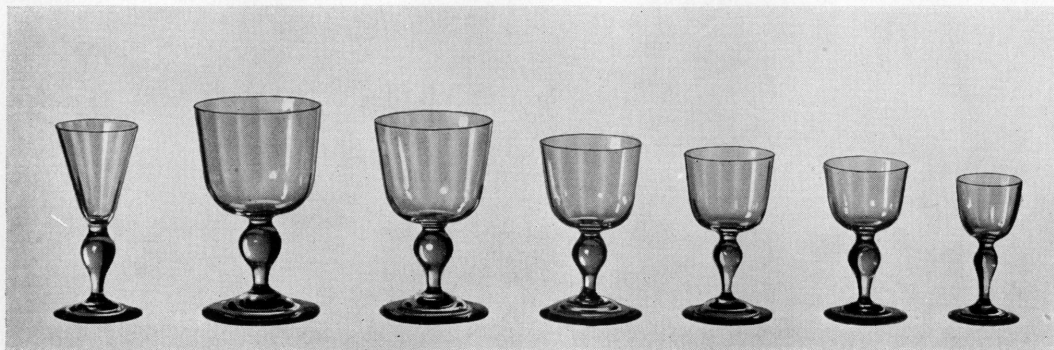


09 10 14 15



Karaff. Code: KB 022.
Decanter.

Vasa. Bh. Vit skål, blått ben. Code: SVE 01—25.
» White bowl, blue stem.



14

09

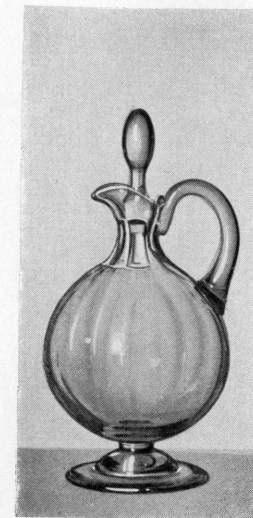
08

06

03

02

01

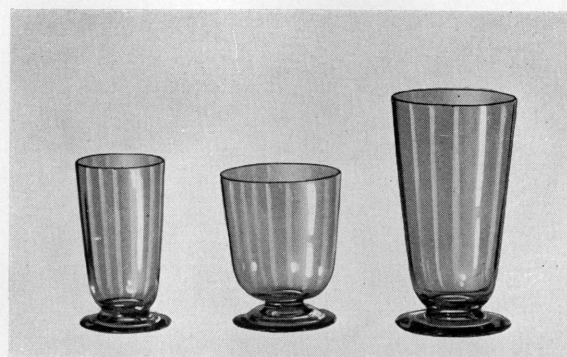


Karaff. Code: KB 023.
Decanter.



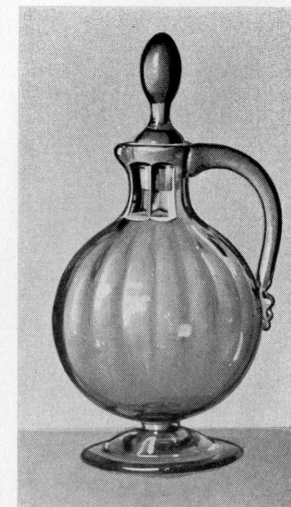
20—21

24—25



15

Whiskyglas
Whisky goblets.
Code: VB 006 VB 007



Karaff. Code: KB 024.
Decanter.

Vincent. Med bård. Code: SVH 01—39
» With border.

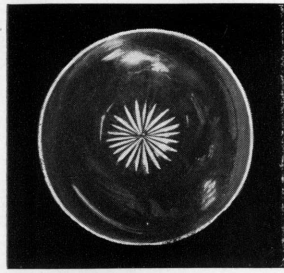


22 09 08 10 05 01 15

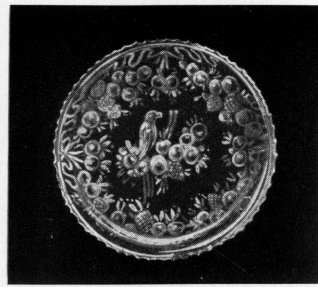
Yakima, dec. 725. Code: SYA 01—10



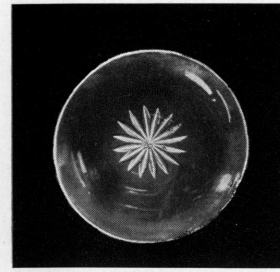
01 02 03 10 08 09



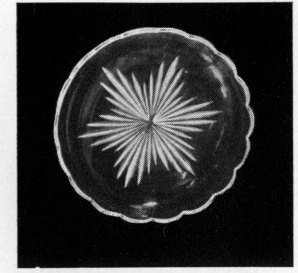
Assiett. — Plate. Code: AB 029
Håkan D.



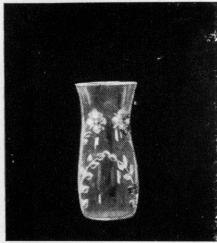
Assiett. — Plate. Code: AB 030
Papegojmönstret. — Parrot pattern.



Assiett. — Plate. Code: AB 031—34
No. 2409



Assiett. — Plate. Code: AB 035
No. 8649



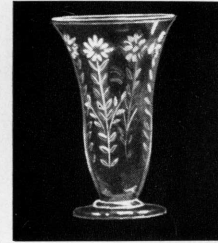
Blomglas. — Flower glass.
Code: BA 012
E. B. No. 1



Blomglas. — Flower glass.
Code: BA 024
Hultström No. 5



Blomglas. — Flower glass.
Code: BA 013
E. B. No. 2



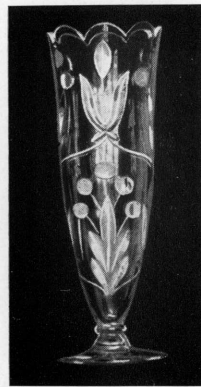
Blomglas. — Flower glass.
Code: BA 014
E. B. No. 4



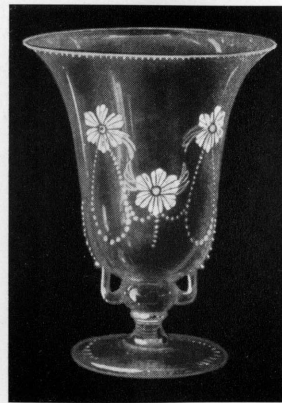
Blomglas. — Flower glasses.
Code: BA 015 BA 016 BA 017
E. B. No. 5 E. B. No. 6 E. B. No. 7



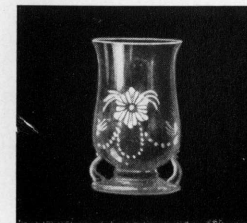
Blomglas. — Flower glass.
Code: BA 018—22
Gunhild.



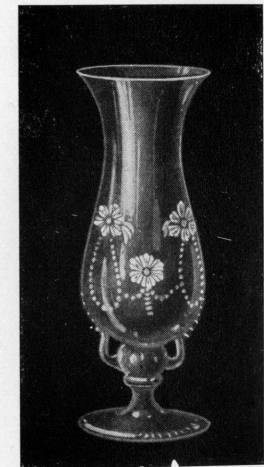
Blomglas. — Flower glass.
Code: BA 011
**Blommotiv. — Flower motive.
Ingrid.**



Blomglas. — Flower glass.
Code: BA 026—28
Hultström No. 6

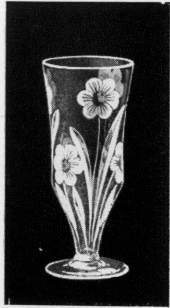


Blomglas. — Flower glass.
Code: BA 029
Hultström No. 12

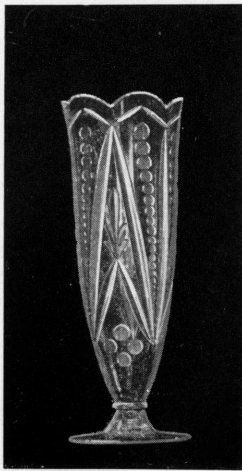


Blomglas. — Flower glass.
Code: BA 023
Hultström No. 2

Blomglas. — Flower glasses.



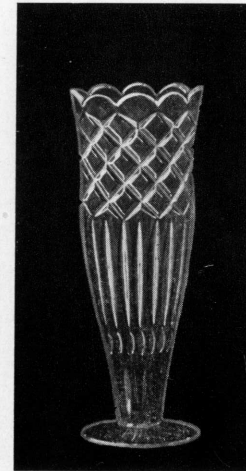
Blomglas.
Flower glass.
Code: BA 030
Ingeborg.



Blomglas. — Flower glass.
Code: BA 031
Ingrid.



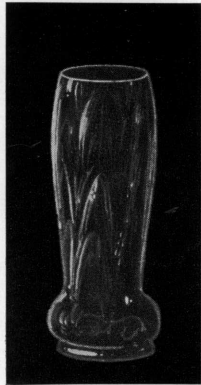
Code: PA 002
Pokaler. — Cups.
PA 003
PA 004
Iris.
Graverad. — Engraved.



Blomglas. — Flower glass.
Code: BA 032
Julius.



Blomglas. — Flower glass.
Code: BA 033
Carl Johan.
A 7



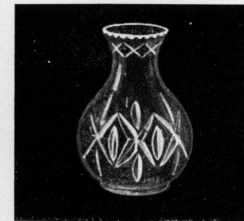
Blomglas. — Flower glass.
Code: BA 037
Isak.



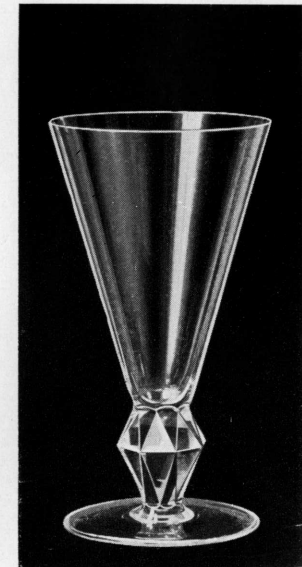
Blomglas. — Flower glass.
Code: BA 034
Lincoln.
A. G. 19



Blomglas. — Flower glass.
Code: BA 035
Lincoln.
Korsör.

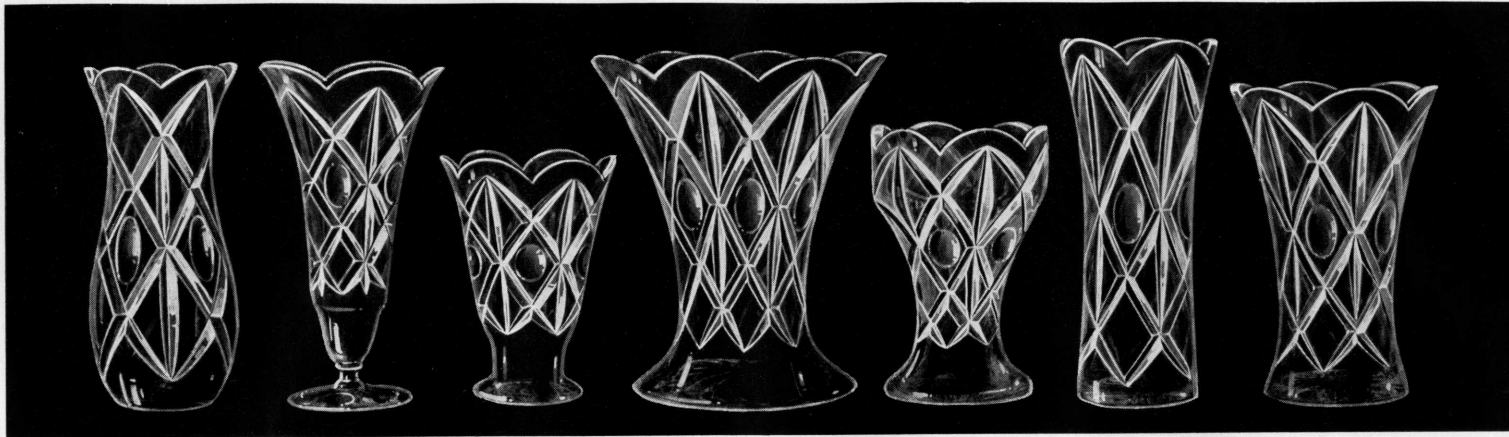


Blomglas. — Flower glass.
Code: BA 036
Carl Johan.
A. G. 19



Pokal. — Cup.
Code: PA 005
Juvel. Bh.

Blomglas. — Flower glasses.



Code: BA 038
Marie Louise.

Code: BA 039
Anund.

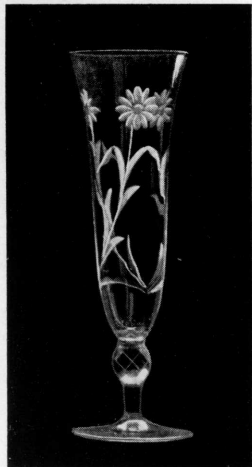
Code: BA 040
**D. smala.
D. narrow.**

Code: BA 041
**Ideal.
Lincoln.**

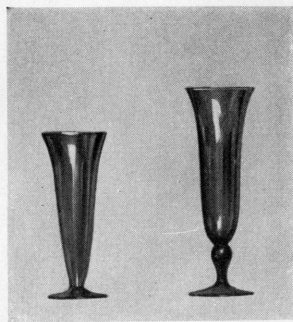
Code: BA 042
Klas.

Code: BA 043
Alma.

Code: BA 044—45
22. 6. 27.



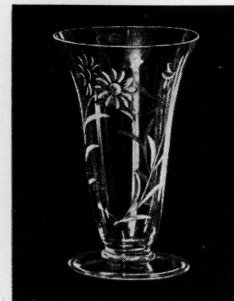
Code: BA 049—50
Prästkrage.



Code: BA 046 BA 047—48
Ryd. Prästkrage.



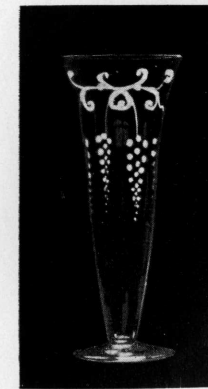
Code: BA 051
Prästkrage.



Code: BA 052
Prästkrage.

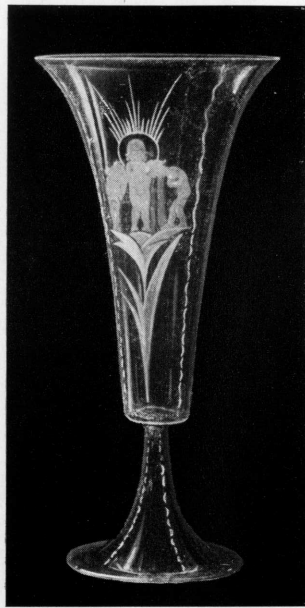


Code: BA 053
Ryd.

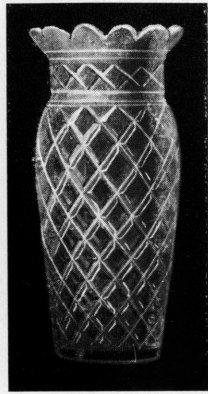


Code: BA 054
Ryd.

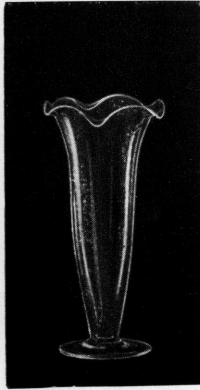
Blomglas. — Flower glasses.



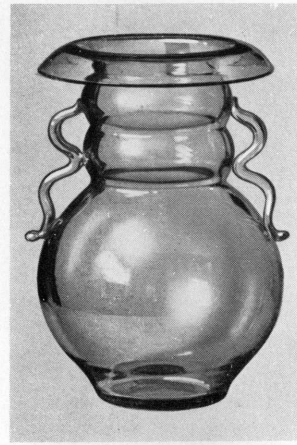
Code: BA 063
Solbarnen.



Code: BA 055—59
Carl Johan.
Main.



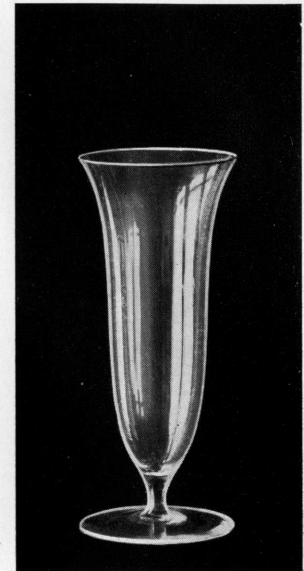
Code: BA 060
R. 10



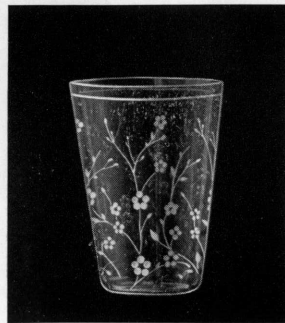
Code: BA 061—62
Salix. Bh.



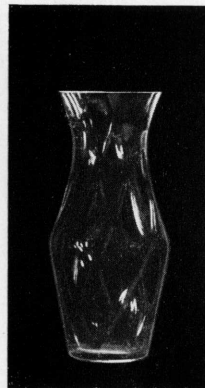
Code: BA 064—68
Syrén.



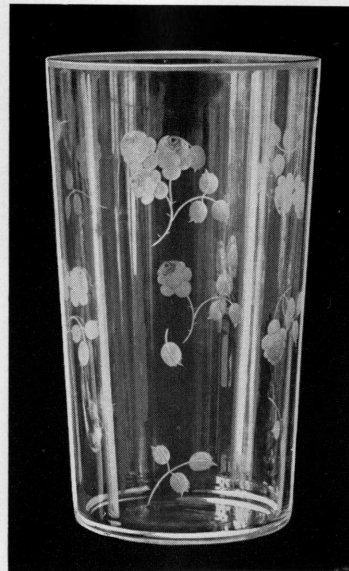
Code: BA 069
Revy 1. Bh.



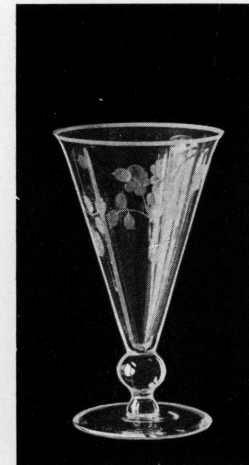
Code: BA 071
Liedbäck 2



Code: BA 072
Ölle.



Code: BA 073
Orleans No. 1. Bh.

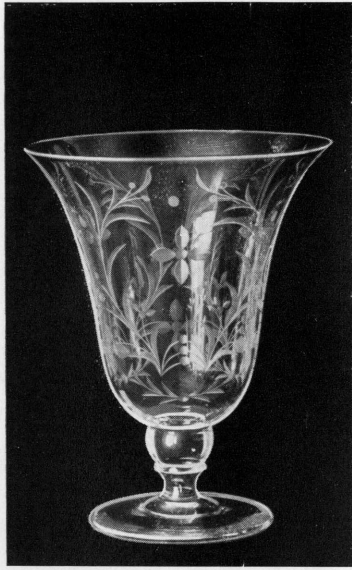


Code: BA 074
Orleans No. 2. Bh.

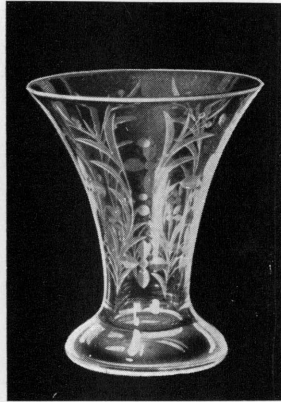


Code: BA 75
Oscar.

Blomglas. — Flower glasses.



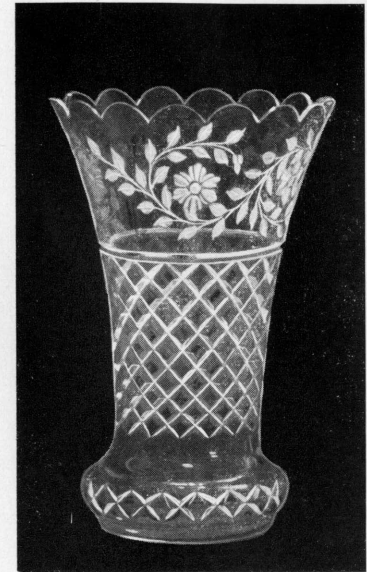
Code: BA 084
Palace. — Hultström 6



Code: BA 081—83
Palace. — Iris.



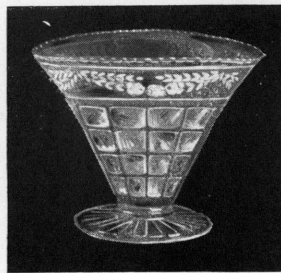
Code: BA 076
Oscar.



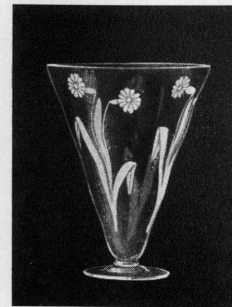
Code: BA 077
Oscar.



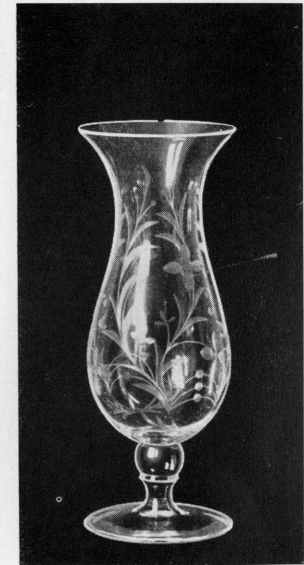
Code: BA 079
Palace. — Anund.



Code: BA 078
Maj.

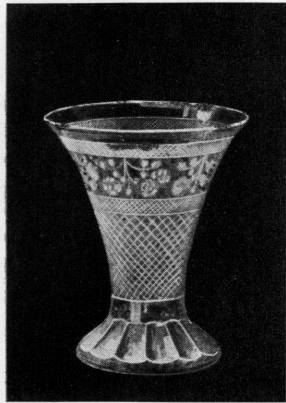


Code: BA 085
Pingstliljor.

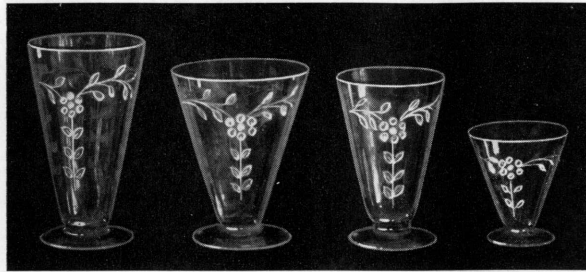


Code: BA 080
Palace. — Hultström 2

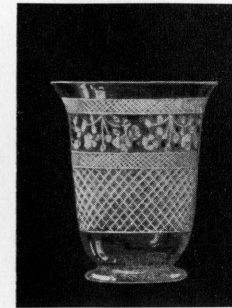
Blomglas. — Flower glasses.



Pokal. — Cup.
Code: PA 006
Tre rosor.
Three roses.



Blomglas. — Flower glasses.
Code: BA 086 BA 087 BA 088 BA 089
Second.
1127 1204 1111 1128



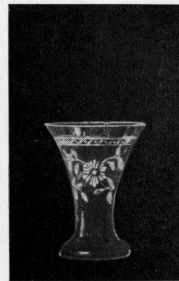
Blomglas. — Flower glass.
Code: BA 090
Tre rosor. — Three roses.
Dropp.



Blomglas. — Flower glass.
Code: BA 091—93
Valentin.



Blomglas. — Flower glass.
Code: BA 094
Vincent.
Form 42 — Shape 42



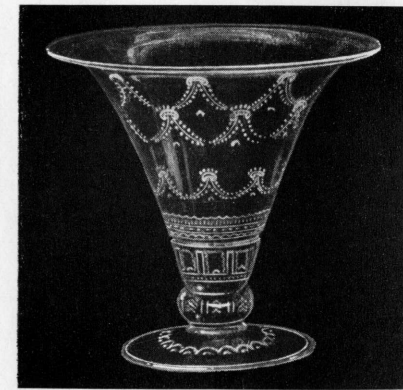
Blomglas. — Flower glass.
Code: BA 095—97
Vincent.
Iris.



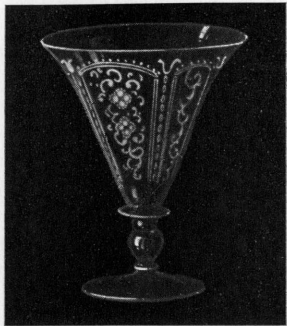
Blomglas. — Flower glass.
Code: BA 103
No. 60



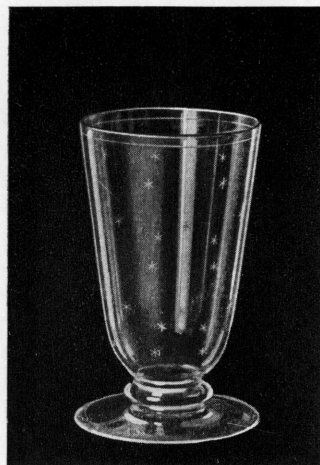
Blomglas. — Flower glass.
Code: BA 098—101
Vincent.
Carl.



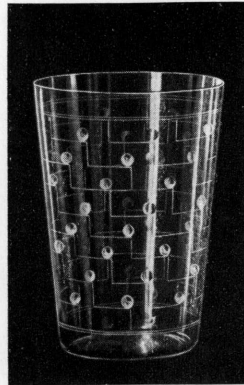
Blomglas. — Flower glass.
Code: BA 102
No. 37



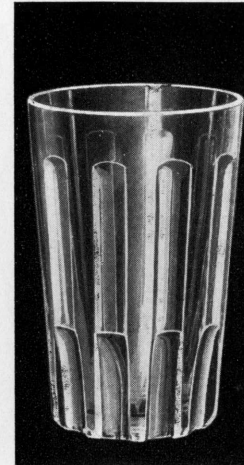
Blomglas — Flower glass.
Code: BA 104
No. 61



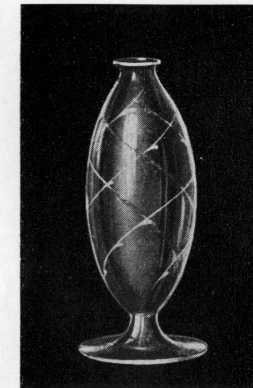
Blomglas — Flower glass.
Code: BA 109
No. 50. Bh.



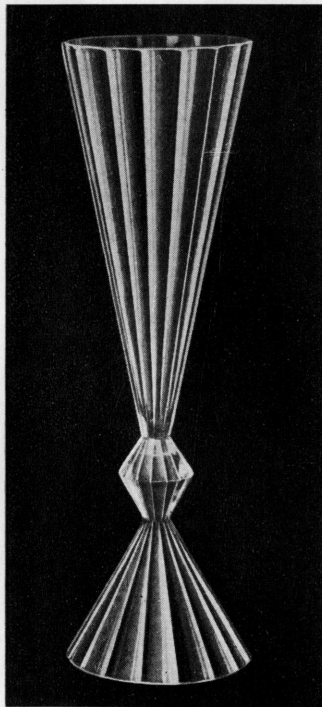
Blomglas — Flower glass.
Code: BA 106
No. 26. Bh.



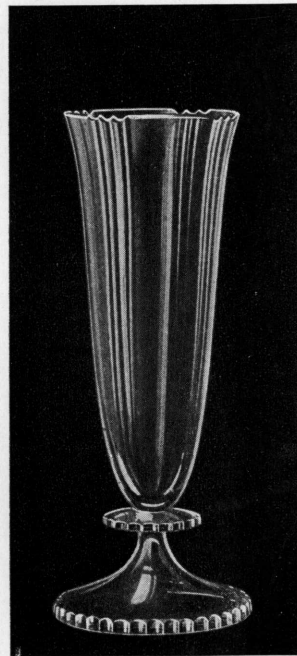
Pokal — Cup.
Code: PA 007
No. 82. Bh.



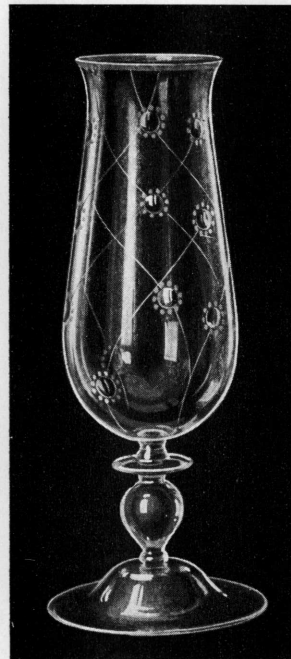
Blomglas — Flower glass.
Code: BA 108
No. 43. Bh.



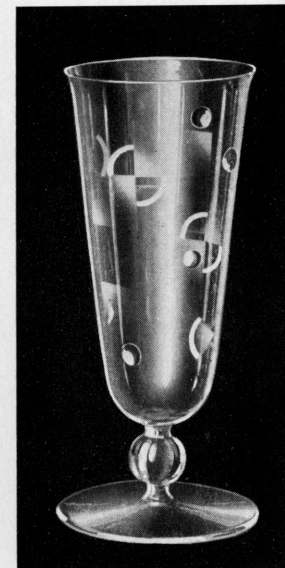
Blomglas — Flower glass.
Code: BA 111
No. 61. Bh.



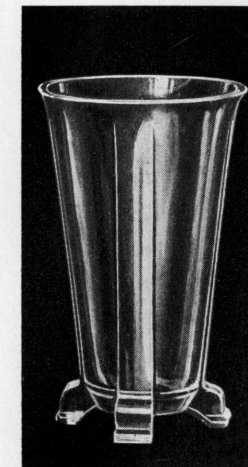
Blomglas — Flower glass.
Code: BA 110
No. 55. Bh.



Blomglas — Flower glass.
Code: BA 107
No. 40. Bh.



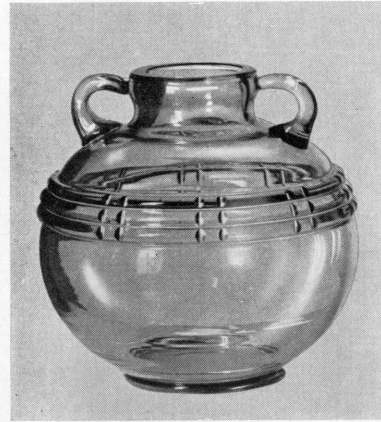
Blomglas — Flower glass.
Code: BA 105
No. 24. Bh.



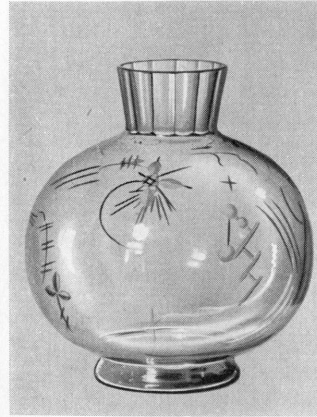
Pokal. — Cup.
Code: PA 008
No. 92. Bh.



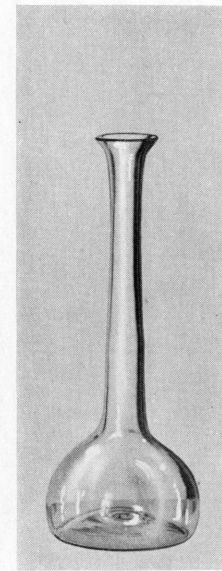
Pokal. — Cup.
Code: PA 009.
No. 111/71. Bh.



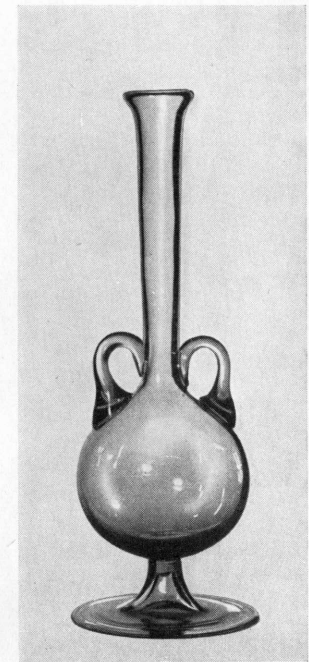
Blomglas. — Flower glass.
Code: BA 113.
No. 98/71. Bh.



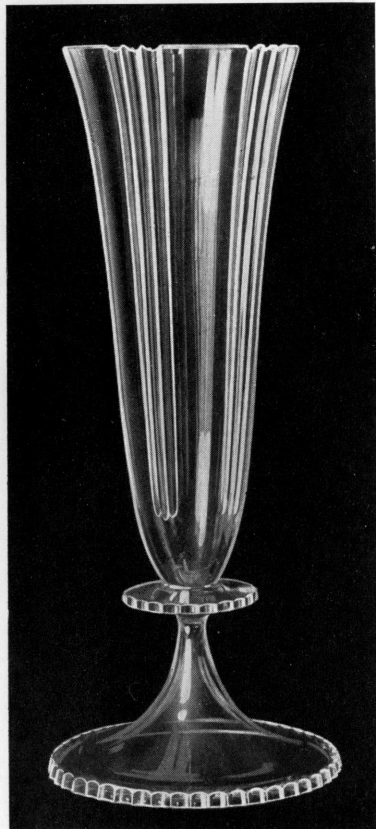
Blomglas. — Flower glass.
Code: BA 115.
No. 103/71. Bh.



Blomglas. — Flower glass.
Code: BA 114.
No. 102/71. Bh.



Blomglas — Flower glass.
Code: BA 112.
No. 97/71. Bh.



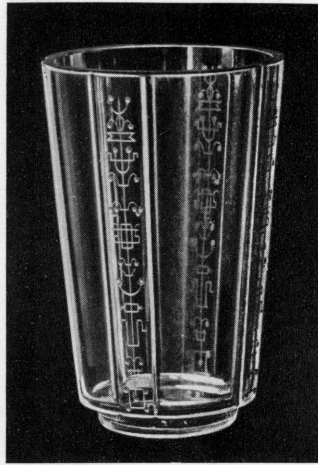
Blomglas. — Flower glass.
Code: BA 116.
No. 115. Bh.



Blomglas. — Flower glass.
Code: BA 119.
No. 137/71. Bh.



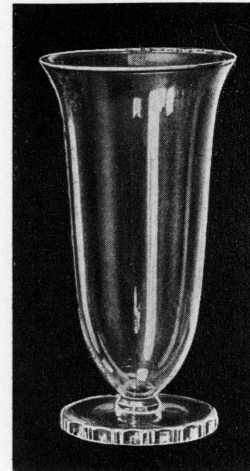
Blomglas. — Flower glass.
Code: BA 117.
No. 125/71. Bh.



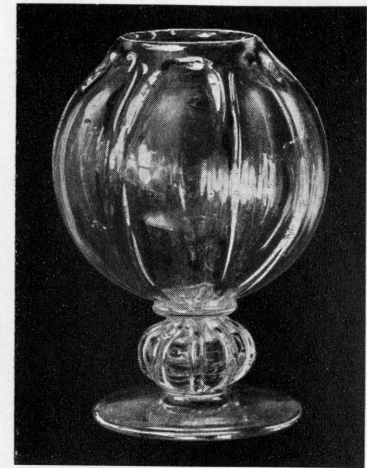
Pokal. — Cup.
Code: PA 010
No. 138. Bh.



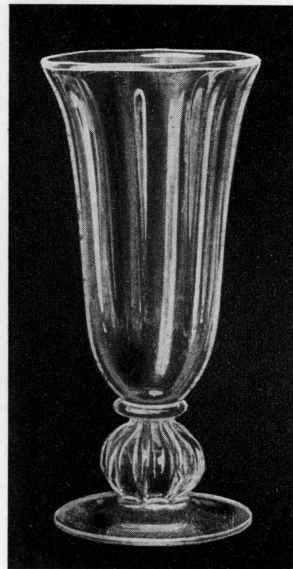
Pokal. — Cup.
Code: PA 011
No. 143. Bh.



Blomglas. — Flower glass.
Code: BA 120
No. 144. Bh.



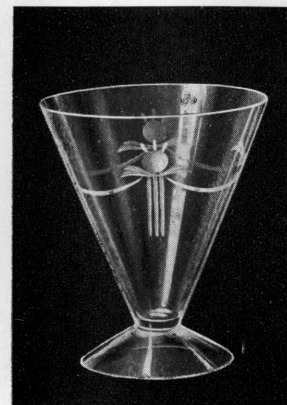
Blomglas. — Flower glass.
Code: BA 121
No. 145. Bh.



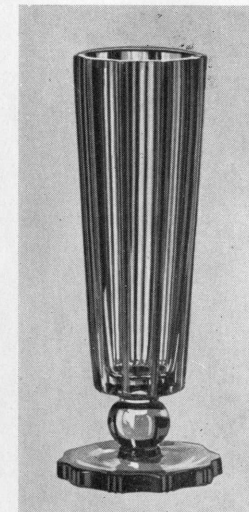
Blomglas. — Flower glass.
Code: BA 122
No. 146. Bh.



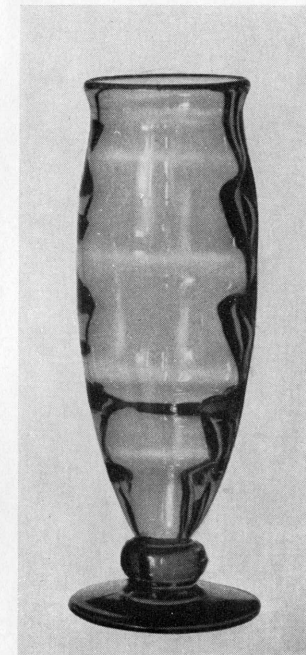
Blomglas. — Flower glass.
Code: BA 123
No. 149. Bh.



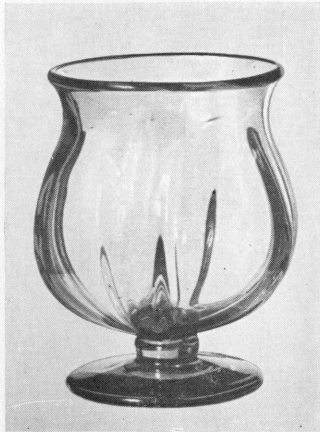
Blomglas. — Flower glass.
Code: BA 124
No. 152. Bh.



Blomglas. — Flower glass.
Code: BA 125
No. 157/71. Bh.



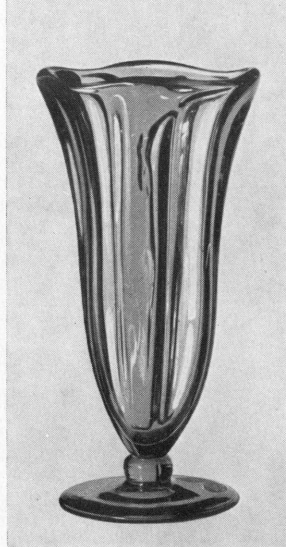
Blomglas. — Flower glass.
Code: BA 126
No. 158/71. Bh.



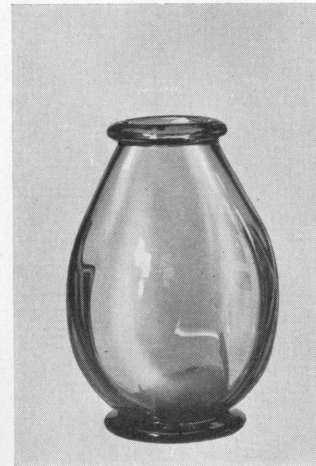
Code: BA 127
No. 159/71. Bh.



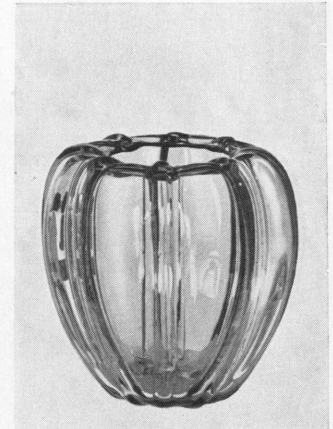
Code: BA 128
No. 160/71. Bh.



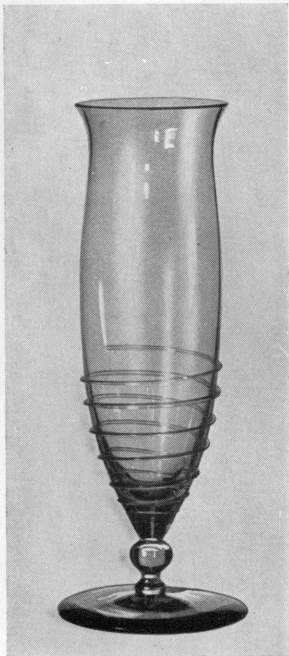
Code: BA 130
No. 163/71. Bh.



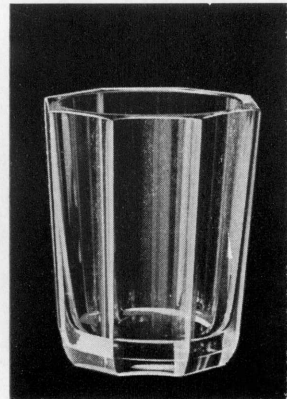
Code: BA 131
No. 164/71. Bh.



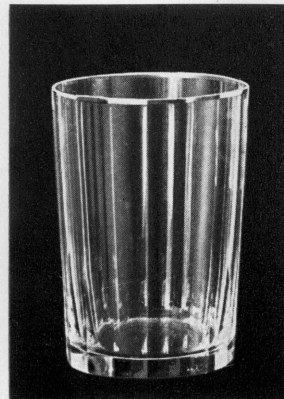
Code: BA 129
No. 162/71. Bh.



Code: BA 132
No. 176/71. Bh.



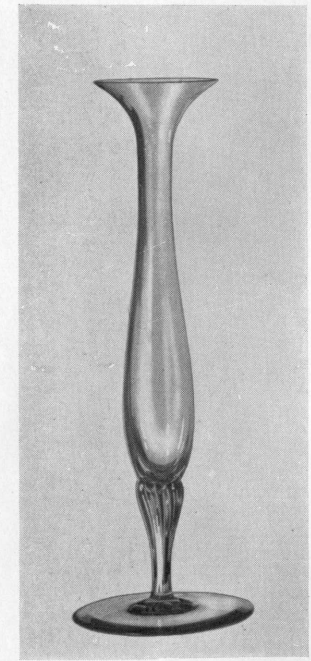
Code: BA 133
No. 177. Bh.



Code: BA 134
No. 178. Bh.

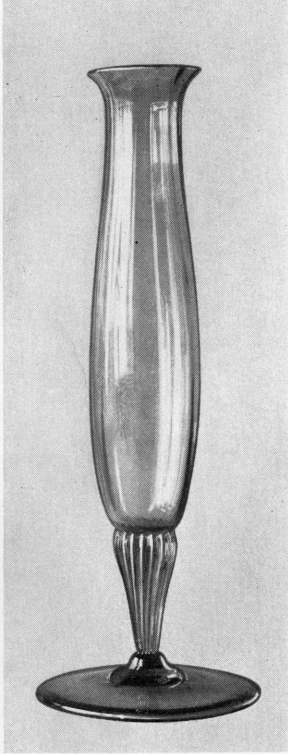


Code: BA 135
No. 179/71. Bh.



Code: BA 136
No. 181/71. Bh.

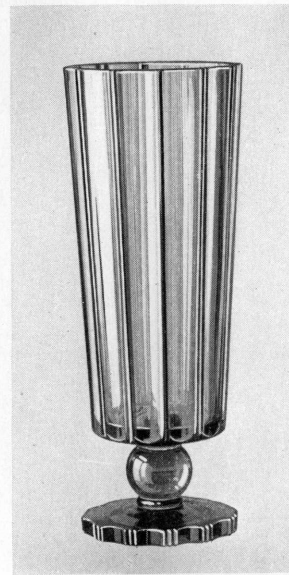
Blomglas. — Flower glasses.



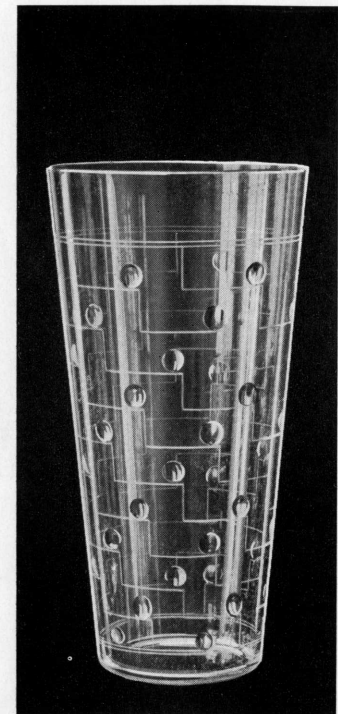
Code: BA 137
No. 183/71. Bh.



Code: BA 138
No. 194/71. Bh.



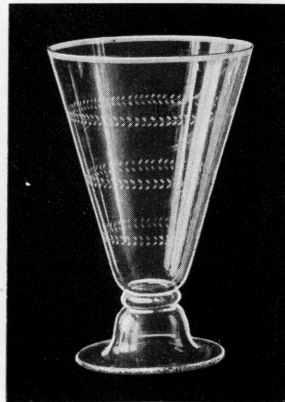
Code: BA 143
No. 209. Bh.



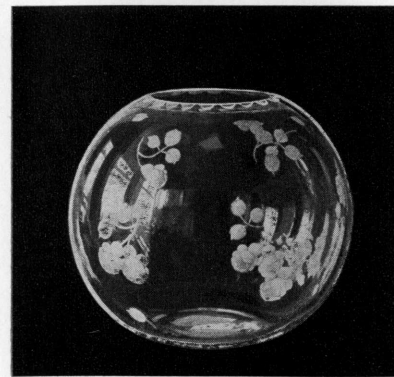
Code: BA 142
No. 205. Bh.



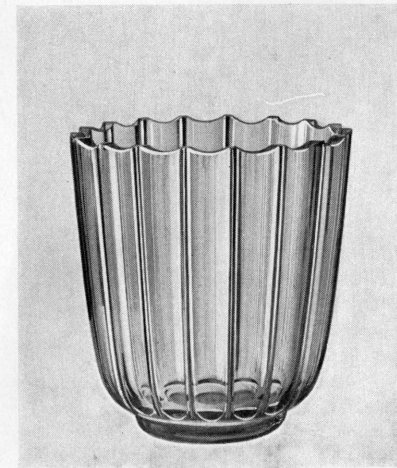
Code: BA 140
No. 197/71. Bh.



Code: BA 139
No. 196. Bh.



Code: BA 144
No. 210. Bh.

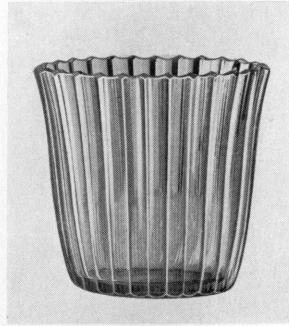


Code: BA 141
No. 203. Bh.

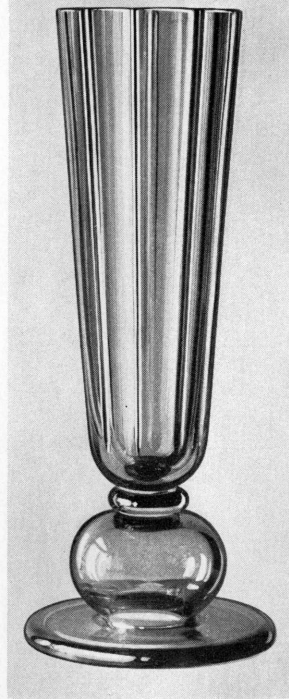
Blomglas.



Code: BA 145
No. 211/71. Bh.

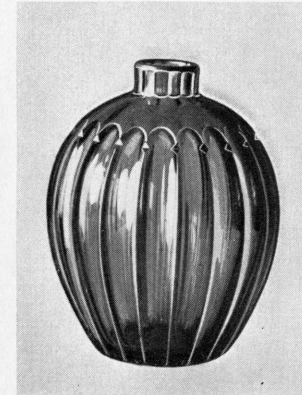


Code: BA 146
No. 220/71. Bh.

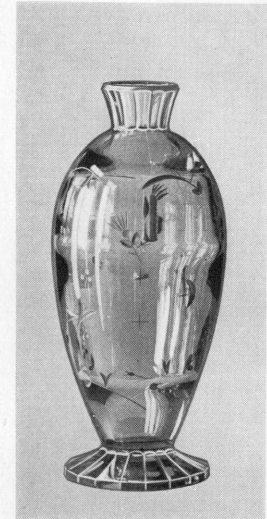


Code: BA 150
No. 224/71. Bh.

Flower glasses.



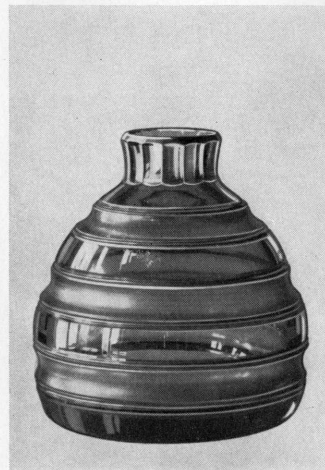
Code: BA 149
No. 223/71. Bh.



Code: BA 147
No. 221/71. Bh.



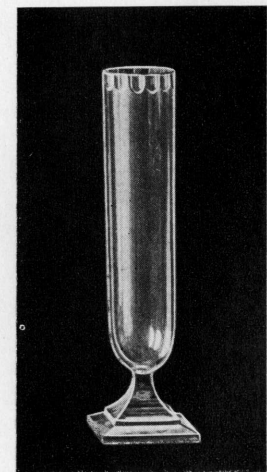
Code: BA 148
No. 222/71. Bh.



Code: BA 151
No. 228/71. Bh.

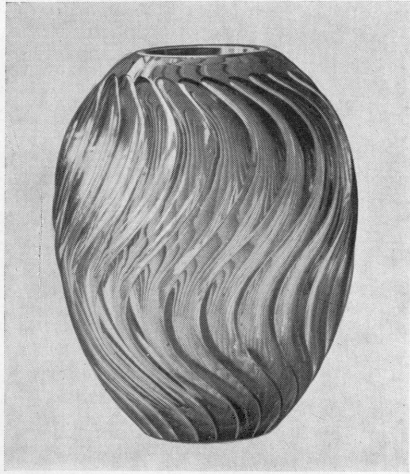


Code: BA 152
No. 229/71. Bh.



Code: BA 153
No. 236. Bh.

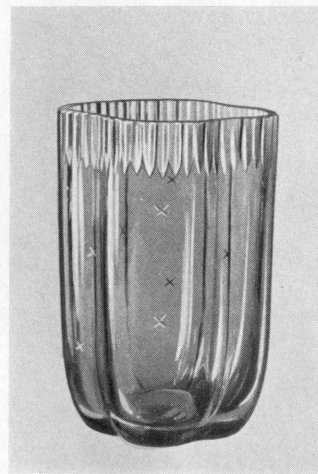
Blomglas. — Flower glasses.



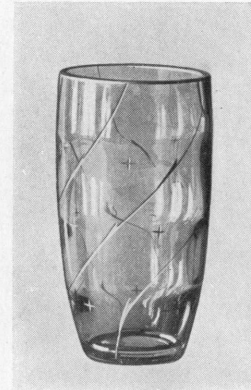
Code: BA 154
No. 237/71. Bh.



Code: BA 155
No. 238/71. Bh.



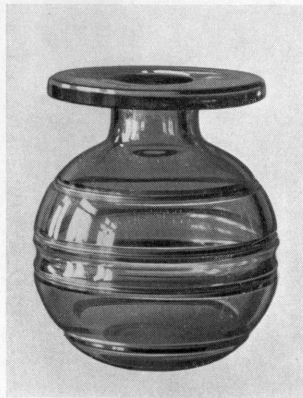
Code: BA 156
No. 239/71. Bh.



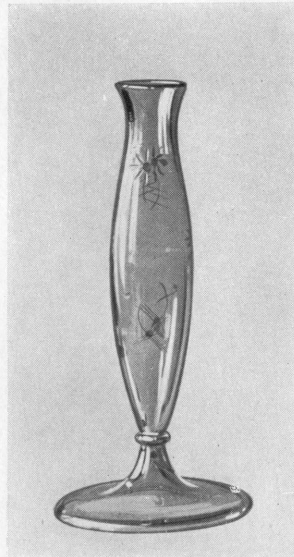
Code: BA 157
No. 240/71. Bh.



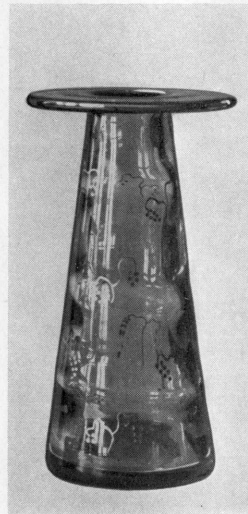
Code: BA 163—64
No. 248. Bh.



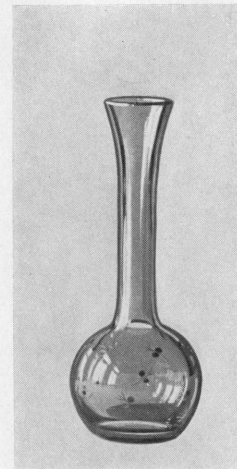
Code: BA 158
No. 242/71. Bh.



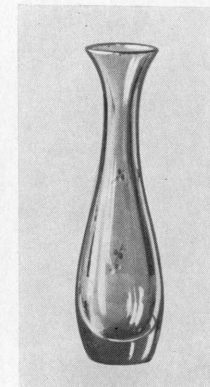
Code: BA 159
No. 243/71. Bh.



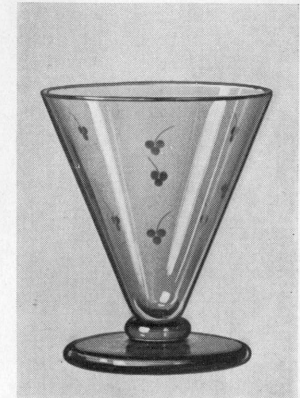
Code: BA 160
No. 244/71. Bh.



Code: BA 161
No. 246/71. Bh.



Code: BA 162
No. 247/71. Bh.

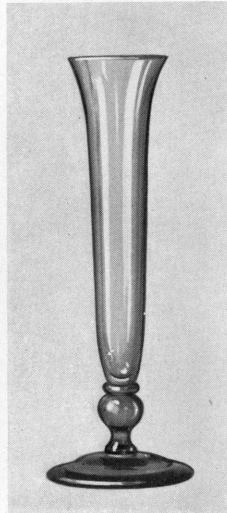


Code: BA 165
No. 250/71. Bh.

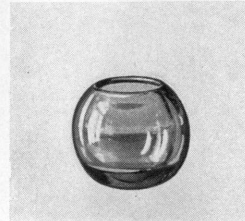
Blomglas. — Flower glasses.



Code: BA 166
No. 251. Bh.



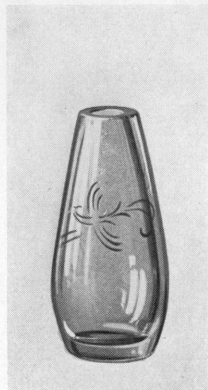
Code: BA 167
No. 253. Bh.



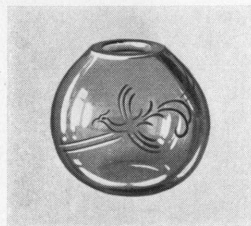
Code: BA 168
No. 259/71. Bh.



Code: BA 169
No. 268/71. Bh.



Code: BA 170
No. 269/71. Bh.



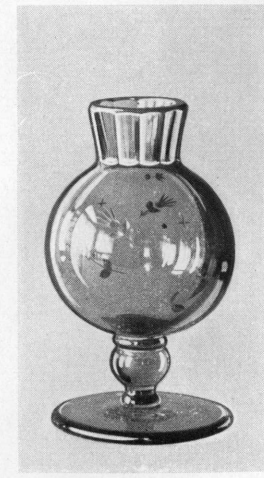
Code: BA 171
No. 270/71. Bh.



Code: BA 172
No. 271/71. Bh.



Code: BA 173
No. 274/71. Bh.

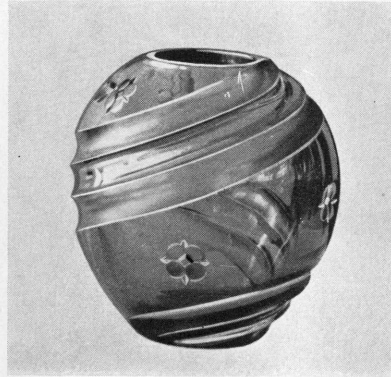


Code: BA 174
No. 277/71. Bh.

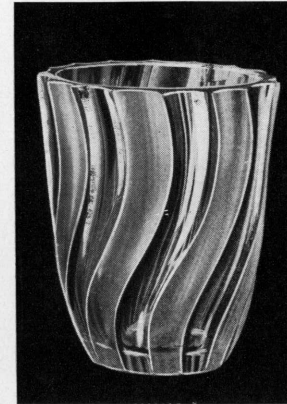
Blomglas. — Flower glasses.



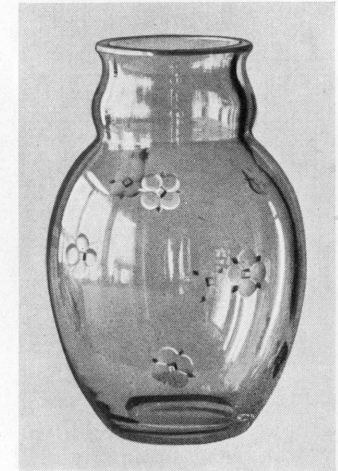
Code: BA 175
No. 278/71. Bh.



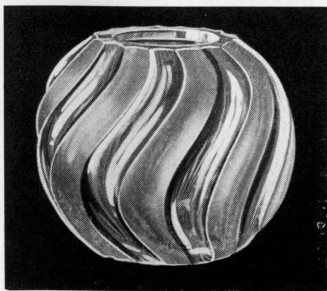
Code: BA 179
No. 291/71. Bh.



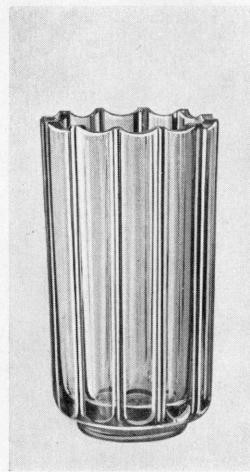
Code: BA 176
No. 288. Bh.



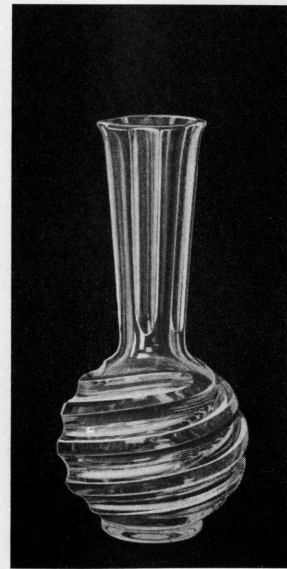
Code: BA 178
No. 290/71. Bh.



Code: BA 177
No. 289. Bh.



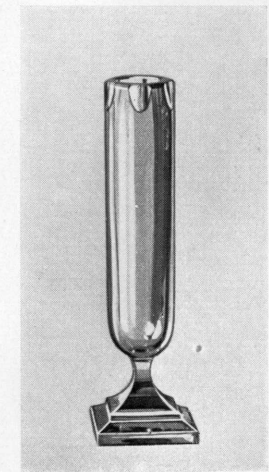
Code: BA 181
No. 296/71. Bh.



Code: BA 180
No. 292. Bh.



Code: BA 182
No. 299/71. Bh.

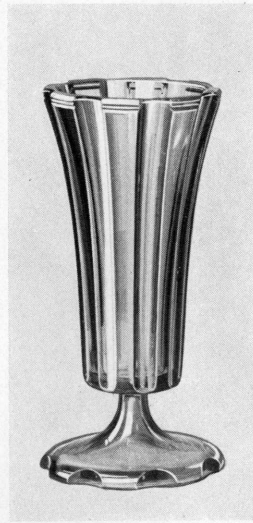


Code: BA 183
No. 301/71. Bh.

Blomglas. — Flower glasses.



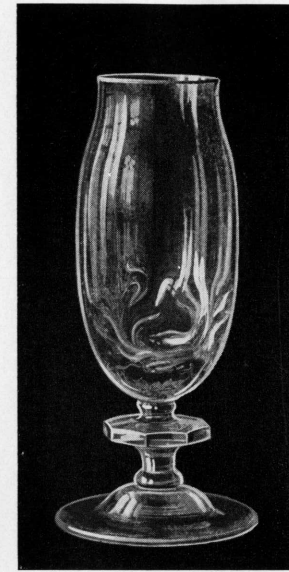
Code: BA 184
No. 304/71. Bh.



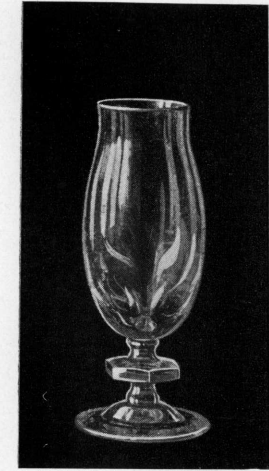
Code: BA 185
No. 306/71. Bh.



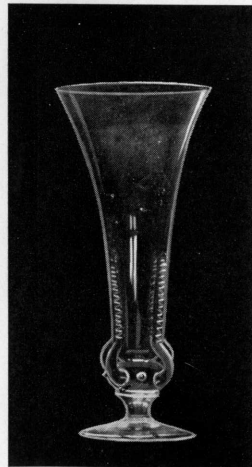
Konfektskål. — Confections bowl.
Code: KC 019
No. 308/71. Bh.



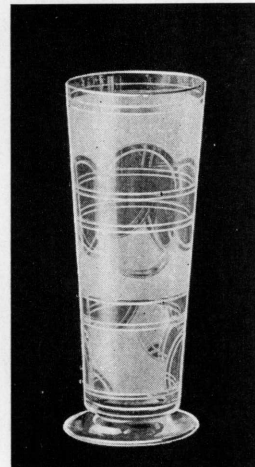
Blomglas. — Flower glass.
Code: BA 186
No. 310. Bh.



Blomglas. — Flower glass.
Code: BA 187
No. 311. Bh.



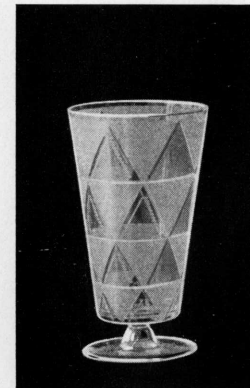
Blomglas. — Flower glass.
Code: BA 188
No. 10/71. Ol.



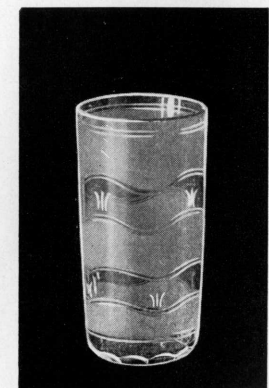
Blomglas. — Flower glass.
Code: BA 189
No. 249. Ol.



Blomglas. — Flower glass.
Code: BA 190
No. 251. Ol.

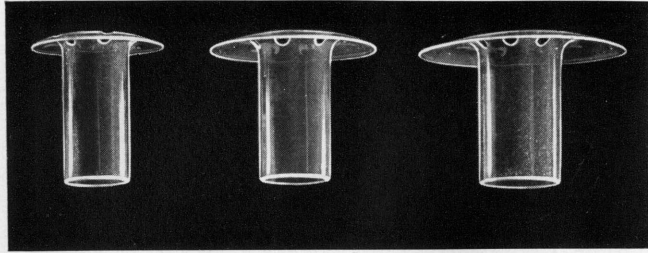


Blomglas. — Flower glass.
Code: BA 191
No. 253. Ol.



Blomglas. — Flower glass.
Code: BA 192
No. 275. Ol.

Bonbonnierer. — Puff boxes.

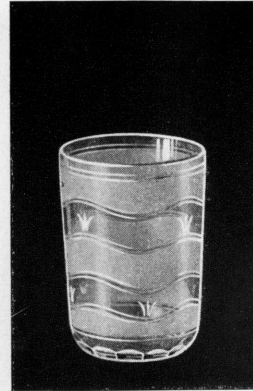


Blomhållare. — Flower holders.
London.

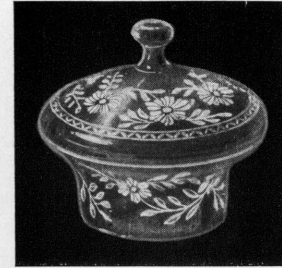
Code: BB 001

BB 002

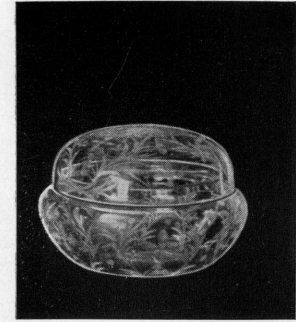
BB 003



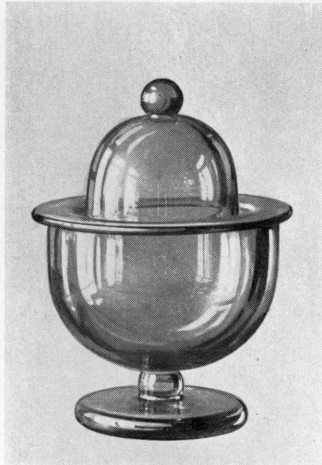
Blomglas. — Flower glass.
Code: BA 193
No. 276. Ol.



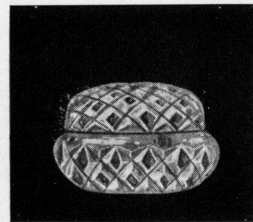
Bonbonnier. — Puff box.
Code: BD 007—08
Vincent.



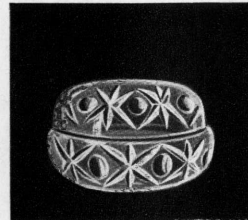
Bonbonnier. — Puff box.
Code: BD 012
Palace.
188



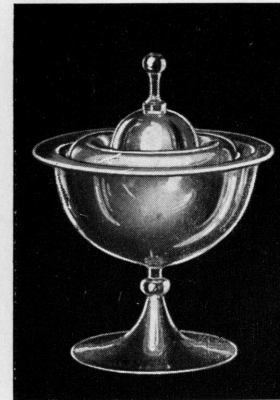
Bonbonnier. — Puff box.
Code: BD 014
No. 199/71. Bh.



Bonbonnier. — Puff box.
Code: BD 009—10
No. 16106
Sax 2



Bonbonnier. — Puff box.
Code: BD 011
Lincoln.
Sax.

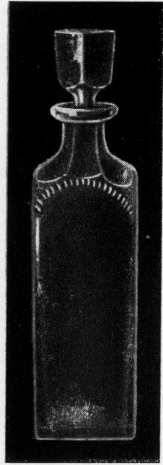


Bonbonnier. — Puff box.
Code: BD 013
No. 101. Bh.



Karaffer. — Decanters.
Codes: KB 027 KB 028
KB 029 KB 030
Kluckflaska. — Cluck bottle.

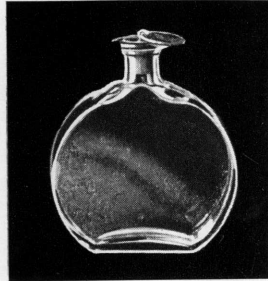
**Karaffer & Brännvinsglas.
Decanters & Brandy glasses.**



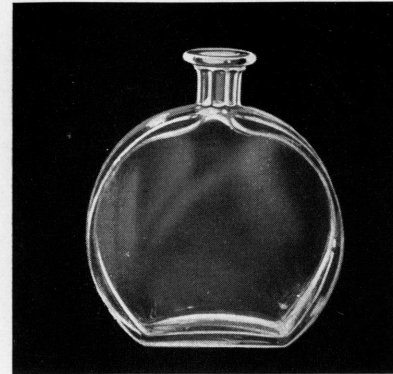
Karaff. — Decanter.
Code: KB 031
No. 8218



Karaff. — Decanter.
Code: KB 032
No. 8221



Karaff. — Decanter.
Code: KB 033
No. 27. Bh.



Karaff. — Decanter.
Code: KB 034
No. 141. Bh.



Brännvinsglas.
Brandy glass.
Code: BE 001
Double. Bh.



Brännvinsglas.
Brandy glass.
Code: BE 002
Kulan. Bh.



Karaff. — Decanter.
Code: KB 035
No. 173. Bh.



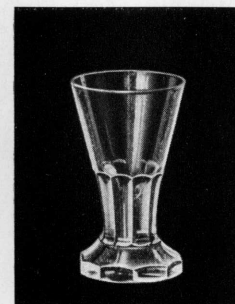
Brännvinsglas.
Brandy glass.
Code: BE 006
No. 174. Bh.



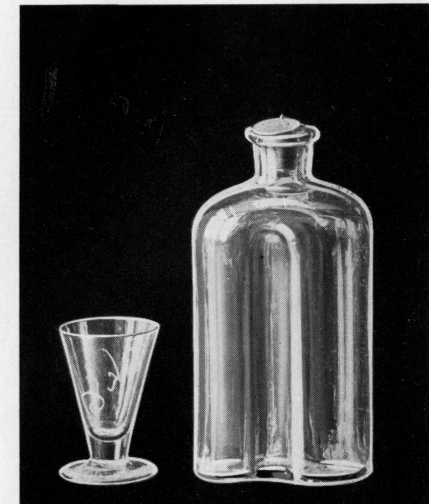
Brännvinsglas.
Brandy glass.
Code: BE 003
No. 140. Bh.



Brännvinsglas.
Brandy glasses.
Code: BE004 BE005
No. 219. Ol. 220. Ol.

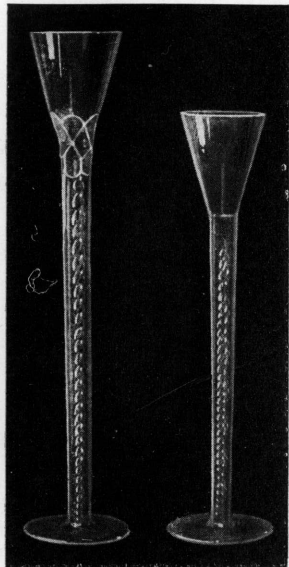


Brännvinsglas.
Brandy glass.
Code: BE 007
No. 171. Bh.



Brännvinsglas.
Brandy glass.
Code: BE 008
No. 258. Bh.

Karaff. — Decanter.
Code: KB 036
No. 257. Bh.



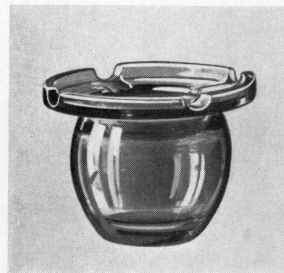
Brännvinsglas.
Brandy glasses.
Code: BE 009—16 BE 017—24
Adolf.



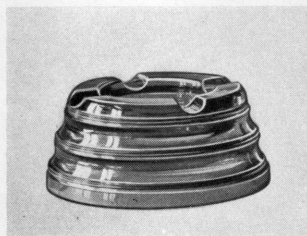
Brännvinsglas.
Brandy glass.
Code: BE 025
Nimb.



Brännvinsglas.
Brandy glass.
Code: BE 026
London.



Askkopp. — Ash tray.
Code: AA 001
No. 215/71. Bh.



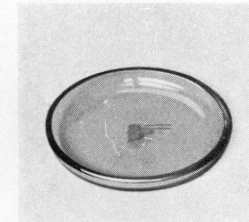
Askkopp. — Ash tray.
Code: AA 004
No. 287/71. Bh.



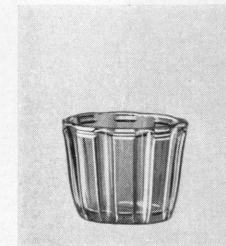
Askkopp. — Ash tray.
Code: AA 002
No. 272/71. Bh.



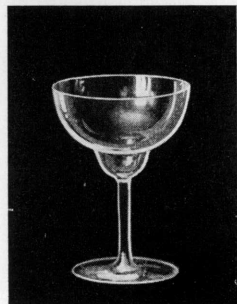
Askkopp. — Ash tray.
Code: AA 005
No. 302/71. Bh.



Askkopp. — Ash tray.
Code: AA 003
No. 273/71. Bh.



Askkopp. — Ash tray.
Code: AA 006
No. 303/71. Bh.



Cocktailsglas.
Cocktail glass.
Code: CA 001
No. 169. Bh.



Cocktailsglas.
Cocktail glass.
Code: CA 002
No. 261. Bh.



Cocktailsglas.
Cocktail glass.
Code: CA 003
No. 156



Cocktailsglas.
Cocktail glass.
Code: CA 004
No. 156

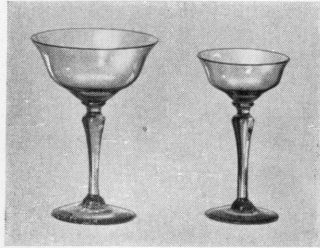


Cocktailsglas.
Cocktail glass.
Code: CA 005
No. 815

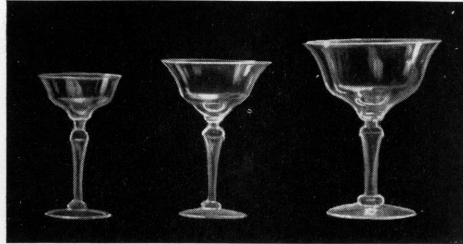


Cocktailsglas.
Cocktail glass.
Code: CA 006
No. 815

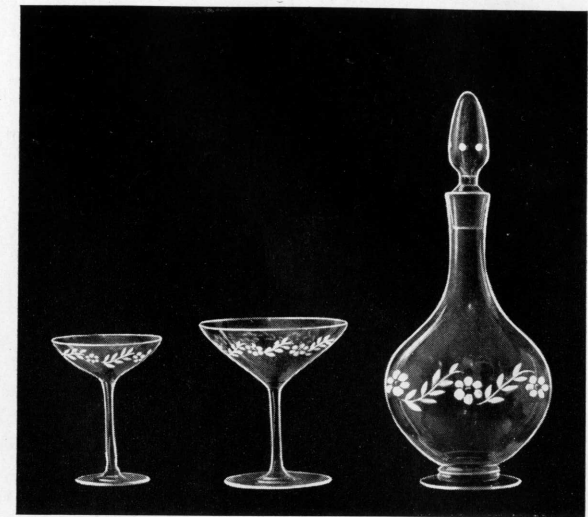
**Karaffer & Glas.
Decanters & Glasses.**



Likörskålar.
Liqueur bowls.
Code: LC 002, LC 003
Betty.

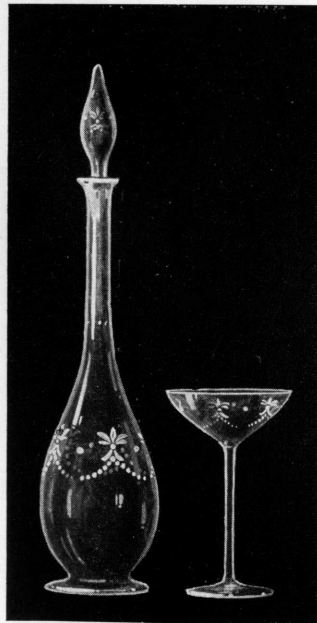


Cognacskålar. — Cognac bowls.
Code: CB 002 CB 003 CB 004
Betty.

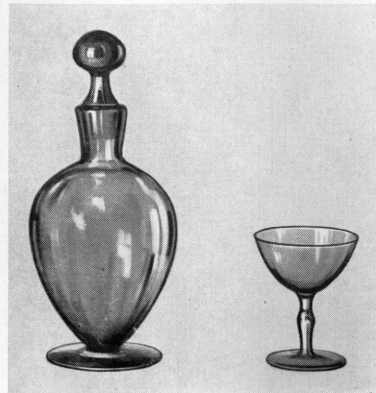


Cognacskålar.
Cognac bowls.
Code: CB 005 CB 006
Munk.

Likörkaraff.
Liqueur decanter.
Code: LA 006



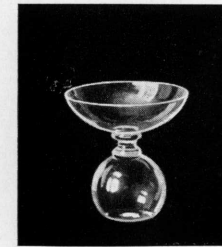
Karaff. Cognacskål.
Decanter. Cognac bowl.
Code: KB037 CB 008
—38
Napoleon, T. G.



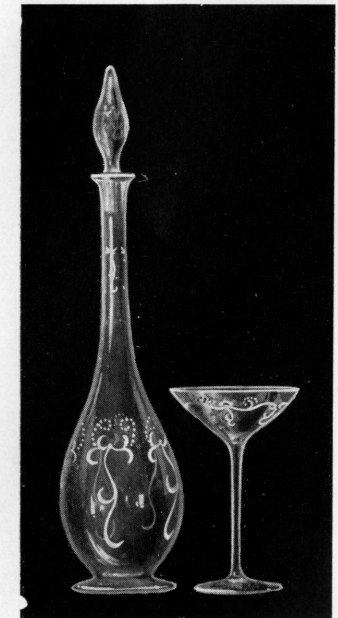
Likörkaraff. Likörskål.
Liqueur decanter. Liqueur bowl.
Code: LA005 Code: LC 004
Lucia.



Cognacskål.
Cognac bowl.
Code: CB 007
Nora.

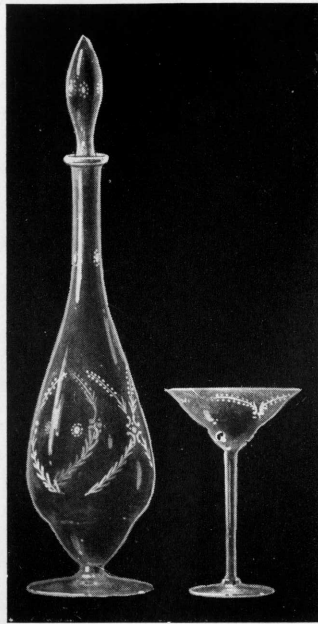


Likörskål.
Liqueur bowl.
Code: LC 005
No. 139. Bh.



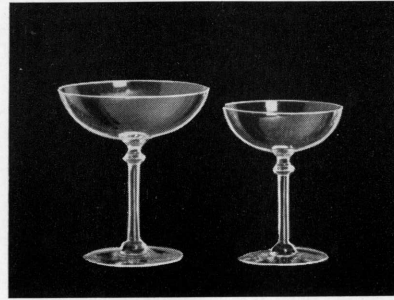
Karaff. Cognacskål.
Decanter. Cognac bowl.
Code: KB039 CB 009
Napoleon.
Graverad. — Engraved.

**Karaffer & Glas.
Decanters & Glasses.**



Karaff.
Decanter.
Code: KB 040
Tage 13

Cognacsskål.
Cognac bowl.
Code: CB 012
Tage 12



Cognacsskål.
Cognac bowl.
Code: CB 010

Likörskål.
Liqueur bowl.
Code: LC 006

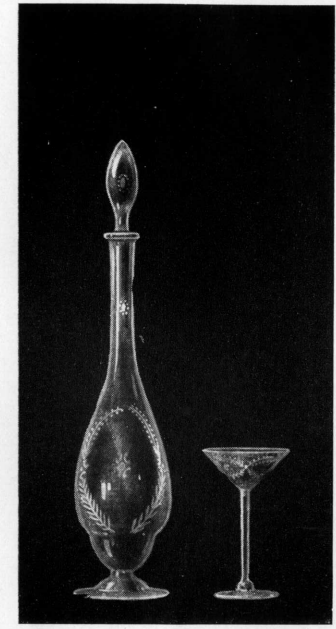
Ödin.
Slät. - Plain.



Cognacsskål.
Cognac bowl.
Code: CB 011

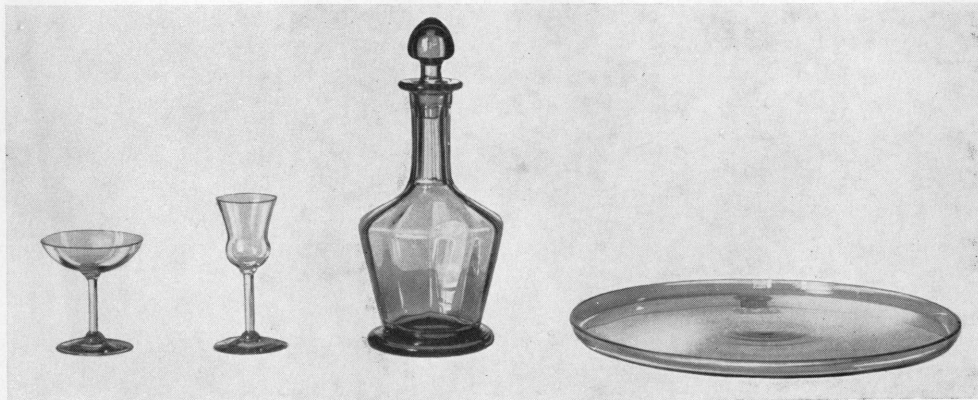
Likörskål.
Liqueur bowl.
Code: LC 007

Ödin. T. G. 10



Likörkaraff.
Liqueur dec.
Code: LA 007
Tage 14

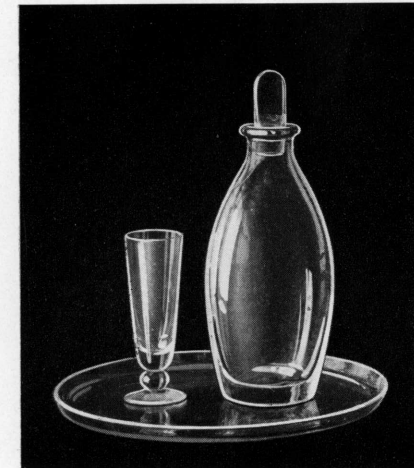
Likörskål.
Liqueur bowl.
Code: LC 008
Tage 11



Likörskålar.
Liqueur bowls.
Codes: LC 009 LC 010
No. 166/71. Bh. 167/71. Bh.

Likörkaraff.
Liqueur decanter.
Code: LA 008
No. 165/71. Bh.

Fat. - Tray.
Code: FA 002
No. 168/71. Bh.

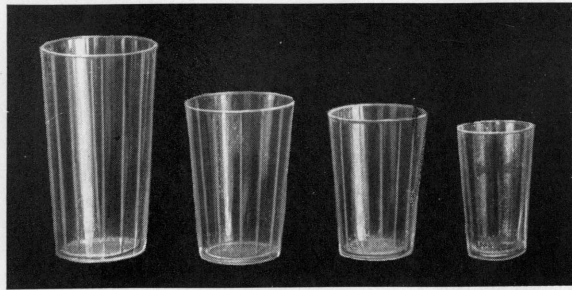


Likörskål.
Liqueur bowl.
Code: LC 011
No. 284. Bh.

Likörkaraff.
Liqueur decanter.
Code: LA 009
No. 283. Bh.

Fat. - Tray.
Code: FA 003
No. 285. Bh.

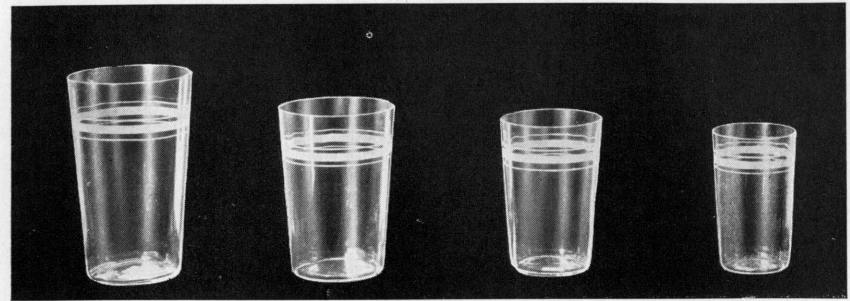
Dricksglas. — Tumblers.



Code: DA 001—05
Becher, med stolpar.
 » with pillars.



Code: DA 006
Pyramid.

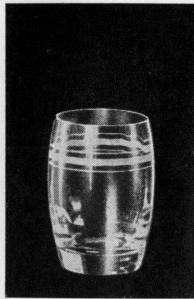


Code: DA 007
No. 8

DA 008
No. 253

DA 009
Becher.

DA 010
No. 6



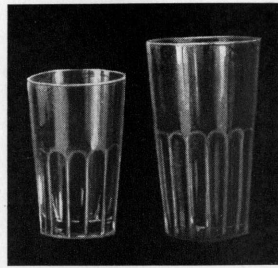
Code: DA 011
Barrel.



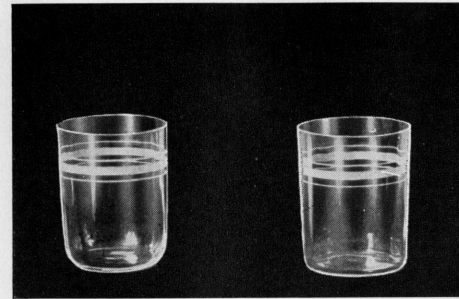
Code: DA 012
Blåsta, facett.
Blown, »



DA 015
Blåsta, oliv.
Blown, »

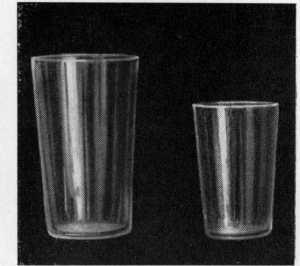


Code: DA 014 DA 015
Blåsta, oliv.
Blown, »
 No. 2118

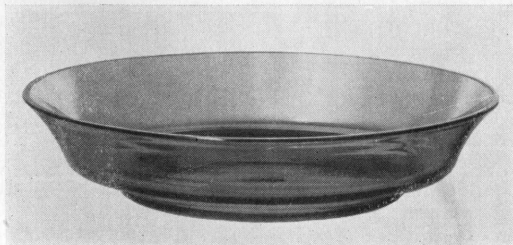


Code: DA 016
Rund-bottnade.
Round bottom.
 No. 15

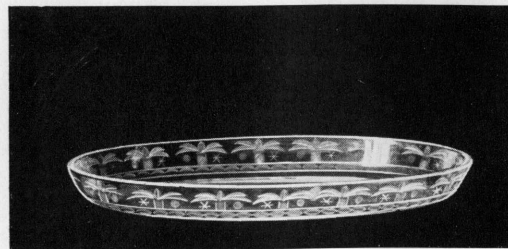
DA 017



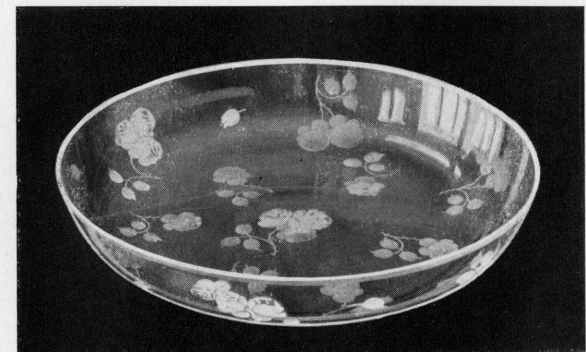
Code: DA 018—22
Slåta. — Plain.
No. 7847



Fat. — Tray.
 Code: FA 004
Nätet. — The Net.

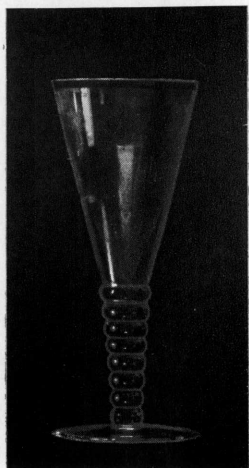


Fat. — Tray.
 Code: FA 007
Ryd.



Fat. — Tray.
 Code: FA 008
No. 218. Bh.

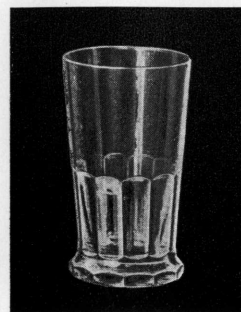
**Glas & Fat.
Goblets & Trays.**



Pokal. — Cup.
Code: PA 012—13
Saxben.



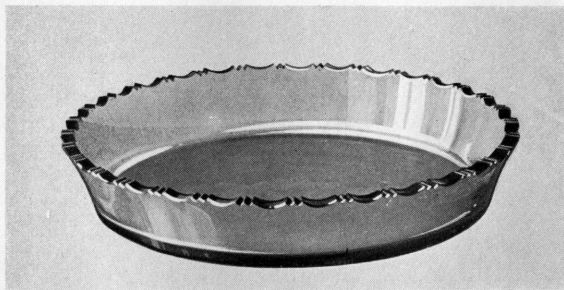
Whiskyglas. — Whisky goblets.
Code: VB 008
No. 147. Bh.



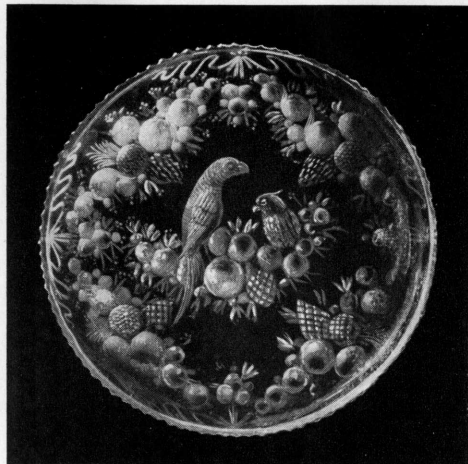
Code: VB 009
No. 172. Bh.



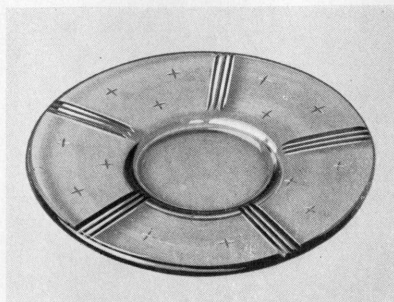
Fat. — Tray.
Code: FA 005
Papegojmönstret. — Parrot pattern.



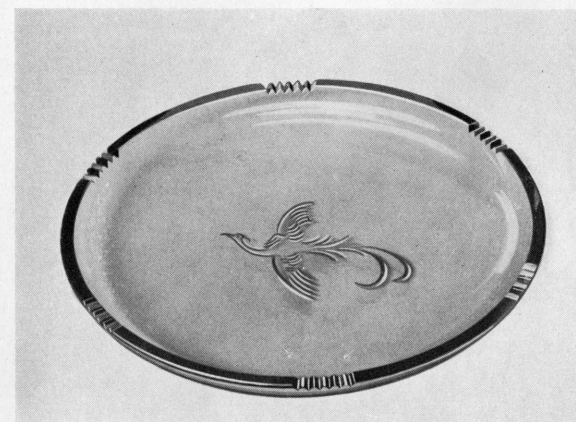
Fat. — Tray. Code: FA 012
No. 309/71. Bh.



Fat. — Tray.
Code: FA 006
Papegojmönstret. — Parrot pattern.

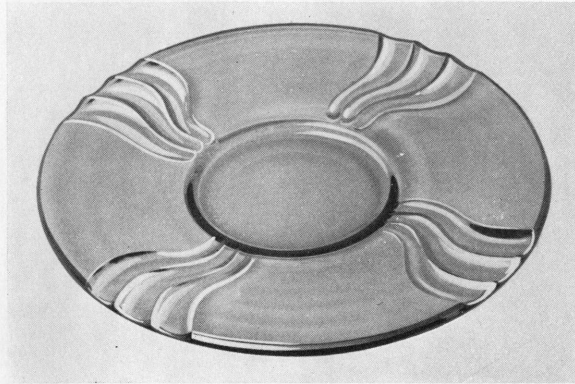


Fat. — Tray.
Code: FA 010
No. 241/71. Bh.

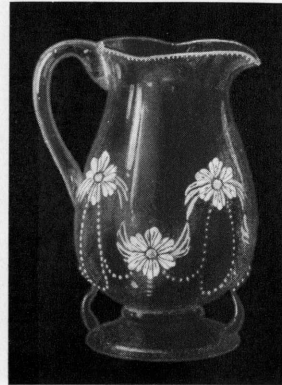


Fat. — Tray.
Code: FA 009
No. 230/71. Bh.

Kannor. — Jugs.



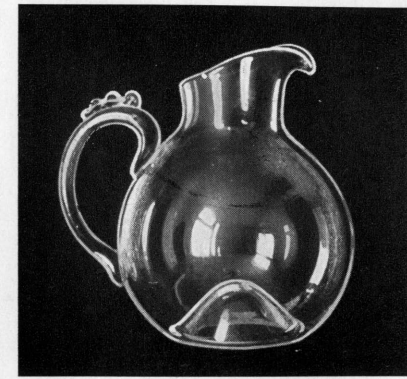
Fat. — Tray.
Code: FA 011
No. 293/71. Bh.



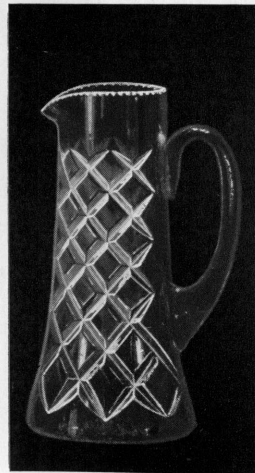
Kanna. — Jug.
Code: KA 067
Hultström.
No. 11



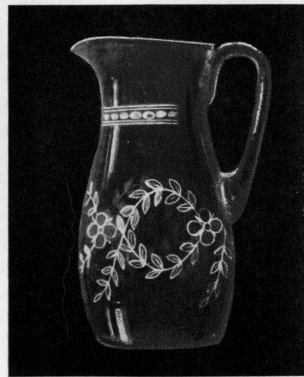
Kanna. — Jug.
Code: KA 057/61.
Engelsk form. — English shape.
8361



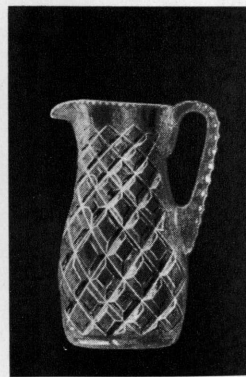
Kanna. — Jug.
Code: KA 068—69
Pilo. Bh.



Kanna. — Jug.
Code: KA 056
Carl Johan.
Lyning.



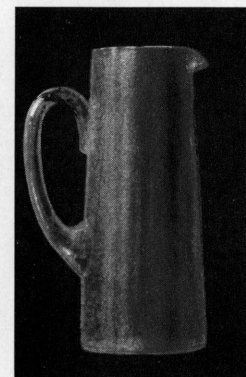
Kanna. — Jug.
Code: KA 062—63
Fyrväppling.
Sven.



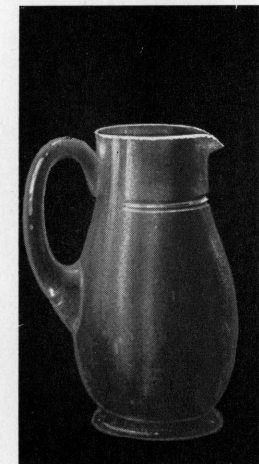
Kanna. — Jug.
Code: KA 072—73
No. 16106
Sven.



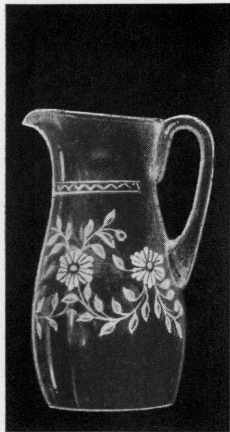
Kanna. — Jug.
Code: KA 066
Helga.
Rolf.



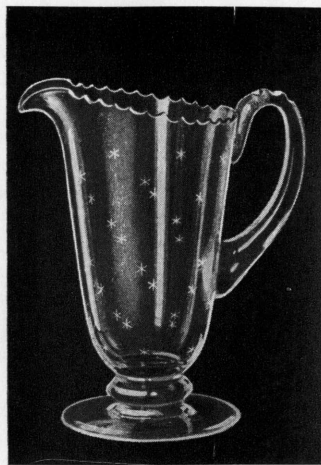
Kanna. — Jug.
Code: KA 064—65
Gauffin.
8374



Kanna. — Jug.
Code: KA 070—71
Savoy.



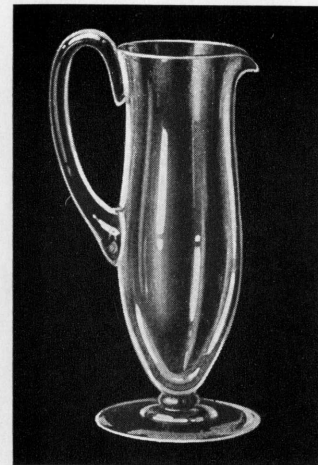
Kanna. — Jug.
Code: KA 074
Vincent.
Sven.



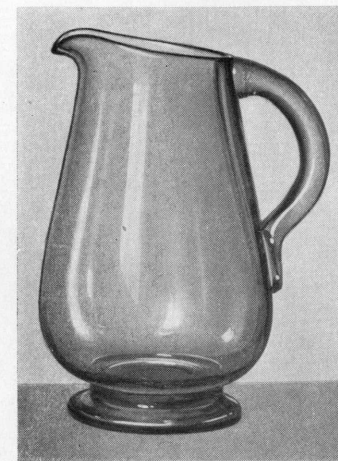
Kanna. — Jug.
Code: KA 075
No. 49. Bh.



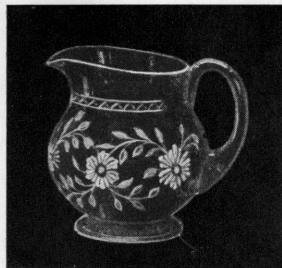
Kanna. — Jug.
Code: KA 076—77
No. 5235



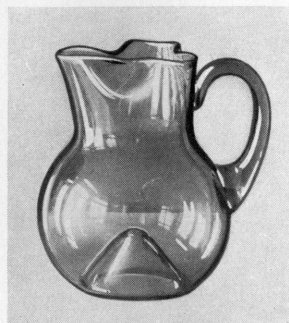
Kanna. — Jug.
Code: KA 078
No. 54. Bh.



Kanna. — Jug.
Code: KA 079
No. 52/71. Bh.



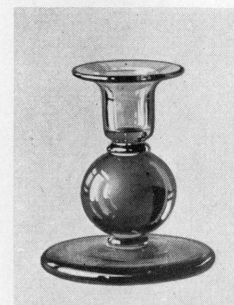
Kanna. — Jug.
Code: KA 080
Vincent
0952



Kanna. — Jug.
Code: KA 081
No. 188/71. Bh.



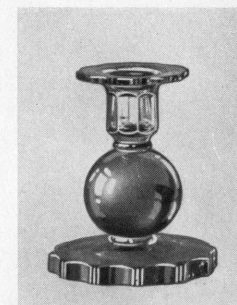
Ljusstake. — Candlestick.
Code: LB 001
No. 81/61



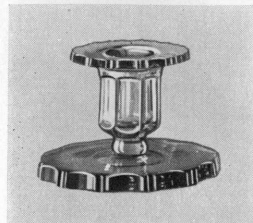
Ljusstake. — Candlestick.
Code: LB 002
No. 219/71. Bh.



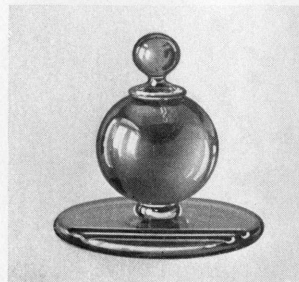
Ljusstake. — Candlestick.
Code: LB 003
No. 254/71. Bh.



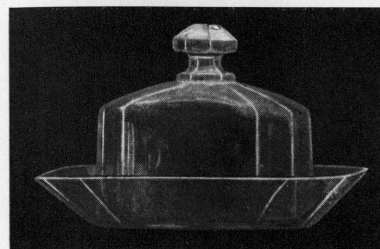
Ljusstake. — Candlestick.
Code: LB 004
No. 204/71. Bh.



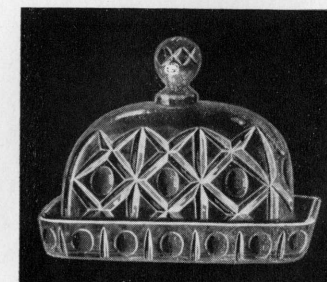
Ljusstake. — Candlestick.
Code: LB 005—06
No. 297/71. Bh.



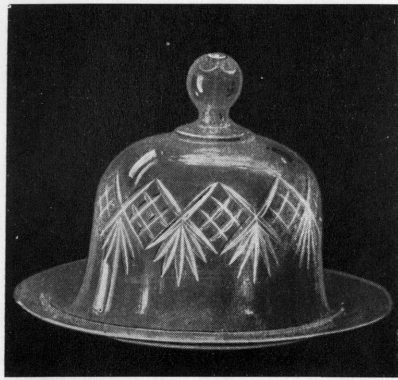
Bläckhorn. — Ink stand.
Code: BC 001
No. 234/71. Bh.



Ostkupa. — Cheese bell.
Code: OA 009
8-kant. — 8-edged.



Ostkupa. — Cheese bell.
Code: OA 010
Lincoln.



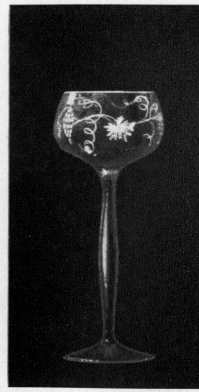
Ostkupa. — Cheese bell.
Code: OA 011—12
Helga.



Punschglas.
Custard glass.
Code: PB 001
No. 8089



Punschglas. — Custard glass.
Code: PB 002
No. 8089



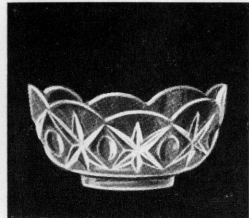
Römer. — Hock bowl.
Code: RA 001
No. 951. T.
Vinlöv



Römer. — Hock bowl.
Code: RA 003
No. 951. T.



Konfektskål. — Confections bowl.
Code: KC 002
No. 155. Bh.



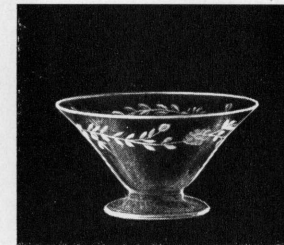
Saladier. — Salad bowl.
Code: SA 013
Lincoln.



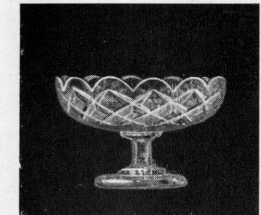
Römer. — Hock bowl.
Code: RA 002
Med ringar.
Circled stem.



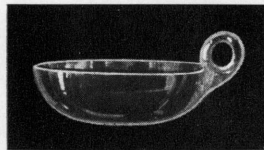
Skål. — Bowl. Code: SB 087—88
Carl Johan.



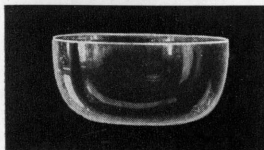
Skölkopp. — Finger bowl.
Code: SC 002
Second 5



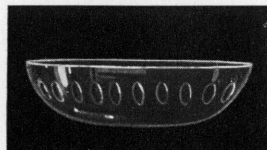
Konfektskål.
Confections bowl.
Code: KC 003—04
Berlin.



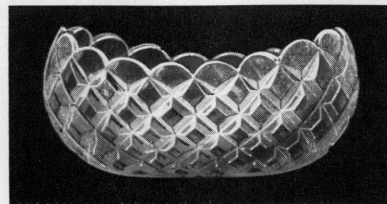
Saladier. — Salad bowl.
Code: SA 015—16
No. 8559



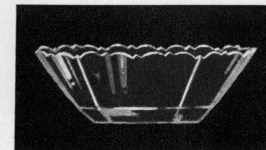
Skölkopp. — Finger bowl.
Code: SC 001
No. 8696



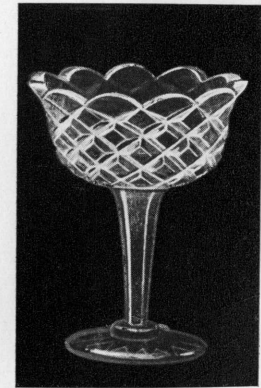
Saladier. — Salad bowl.
Code: SA 014
No. 8569



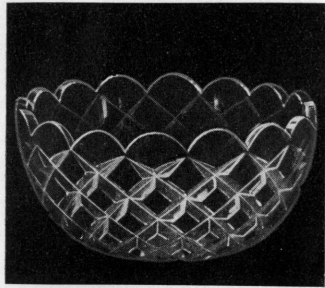
Jardinier. — Jardinière.
Code: JA 001—04
Carl Johan.



Saladier. — Salad bowl.
Code: SA 009—12
Balder.



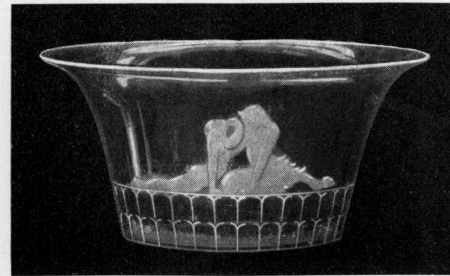
Konfektskål.
Confections bowl.
Code: KC 005—06
Carl Johan.



Skål. — Bowl.
Code: SB 001—06
Carl Johan.



Skål. — Bowl.
Code: SB 007
Syndafallet. — The Lapse.



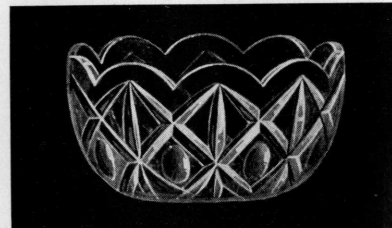
Skål. — Bowl.
Code: SB 008
Faun & nymf.



Skål. — Bowl.
Code: SB 009—10
Hultström, 2 grepar.
» 2 handles



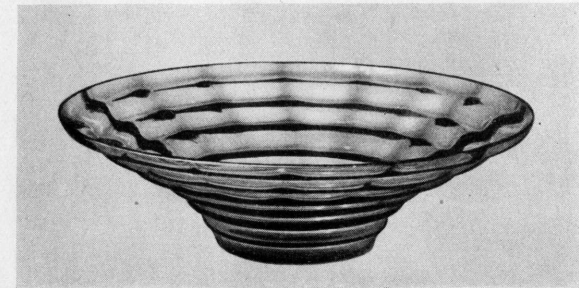
Konfektskål.
Confections bowl.
Code: KC 007
Juvel. Bh.



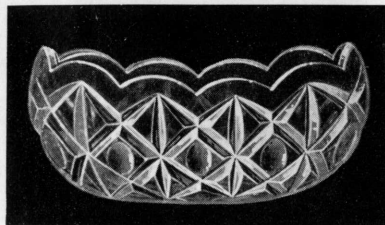
Skål. — Bowl.
Code: SB 011—16
Lincoln.



Konfektskål.
Confections bowl.
Code: KC 008—09
Lincoln.



Skål. — Bowl.
Code: SB 017
Double.



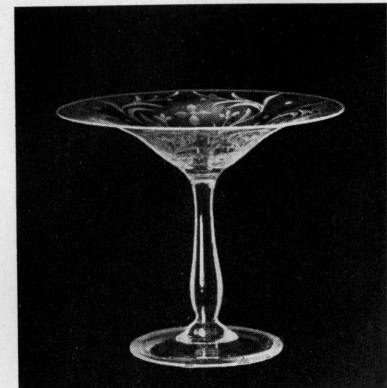
Jardinier. — Jardinière
Code: JA 007—09
Lincoln.



Skål. — Bowl.
Code: SB 018
Palace.
Form 200.
Shape 200.



Skål. — Bowl.
Code: SB 019—23
Palace.
Form Gustav.
Shape Gustav.



Skål. — Bowl.
Code: SB 024
Palace.
Hög fot. 7"
Tall stem. 7"

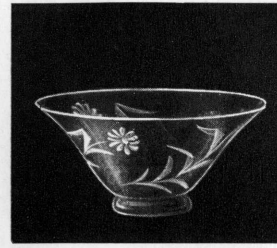
Skålar. — Bowls.



Konfektskål. — Confections bowl.
Code: KC 012
Revy 1. Bh.



Konfektskål. — Confections bowl.
Code: KC 010—11
Palace.
Form Berlin. — Shape Berlin.



Skål. — Bowl.
Code: SB 025
Prästkrage. — The daises.
Optic.



Skål. — Bowl.
Code: SB 026
Revy 1. Bh.

Papegojmönster. — Parrot pattern.



Skål. — Bowl.
Code: SB 027
Med föt. — Footed.

Skål. — Bowl.
Code: SB 028

Blomglas. — Flower glass.
Code: BA 194
Form Ol. 42
Shape Ol. 42

Skål. — Bowl.
Code: SB 029
Form Lennart.
Shape Lennart.

Skål. — Bowl.
Code: SB 030
Form Ol. 35
Shape Ol. 35

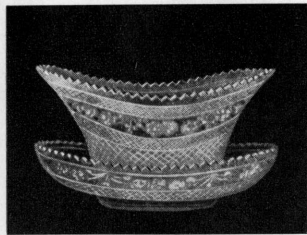
Tre Rosor. Graverad. — Three Roses. Engraved.



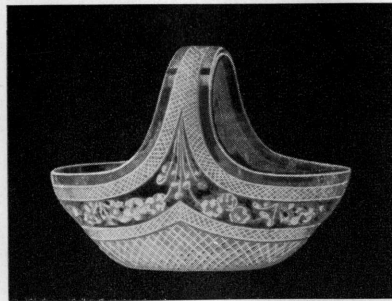
Skål. — Bowl.
Code: SB 031—35.
Form Reval. — Shape Reval.

Skål. — Bowl.
Code: SB 036—39.
Form Lilliehök. — Shape Lilliehook.

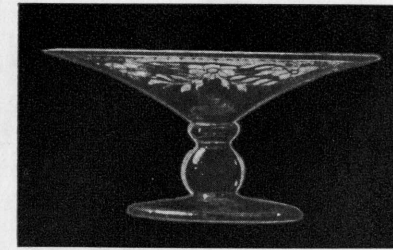
Jardinier. — Jardinière.
Code: JA 005



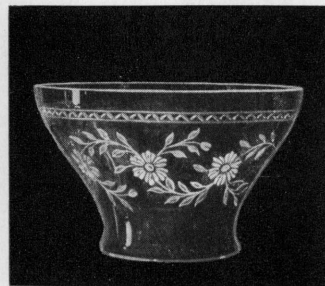
Skål. — Bowl.
Code: SB 040—41
Form Rosenblad. — Shape Rosenblad.



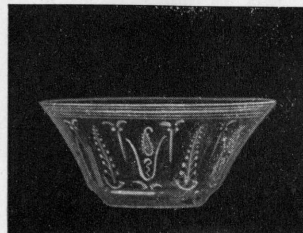
Skål. — Bowl.
Code: SB 042
Form Brilliant. — Shape Brilliant.



Skål. — Bowl.
Code: SB 043—45
Vincent.
Form 918. — Shape 918



Skål. — Bowl. Code: SB 046—50
Vincent.
Form Carl. — Shape Carl.



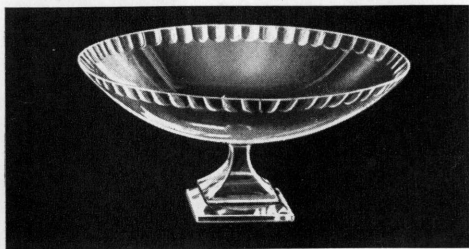
Skål. — Bowl.
Code: SB 052
No. 35



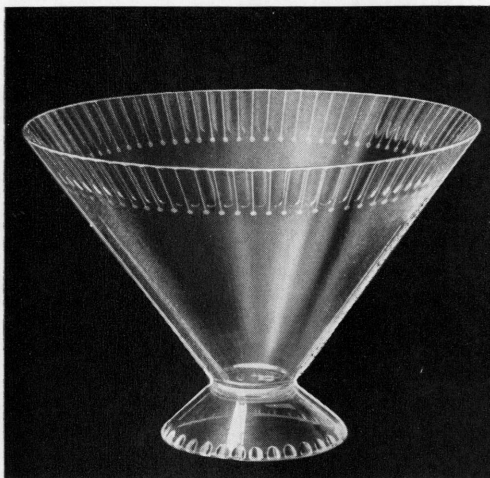
Skål. — Bowl.
Code: SB 053
No. 34



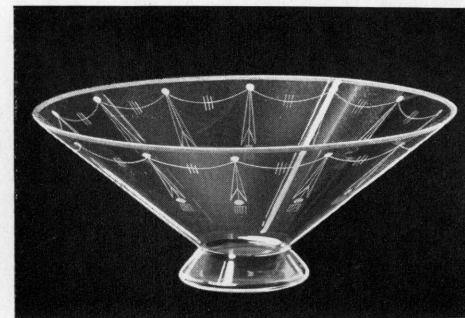
Skål. — Bowl. Code: SB 051
Vincent.
Form 200. — Shape 200.



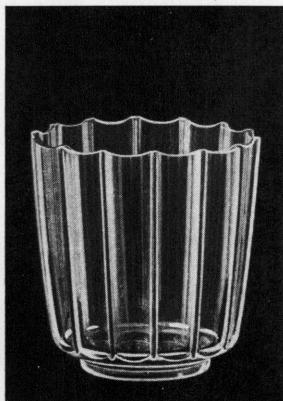
Skål. — Bowl. Code: SB 056
No. 86. Bh.



Skål. — Bowl. Code: SB 054
Fructus. Bh.



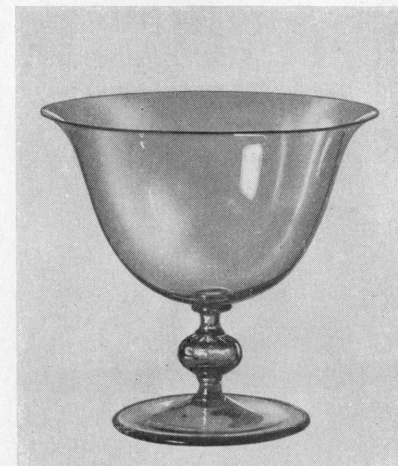
Skål. — Bowl. Code: SB 055
No. 12. Bh.



Skål. — Bowl. Code: SB 059
No. 142. Bh.



Skål. — Bowl. Code: SB 058
No. 104/71. Bh.



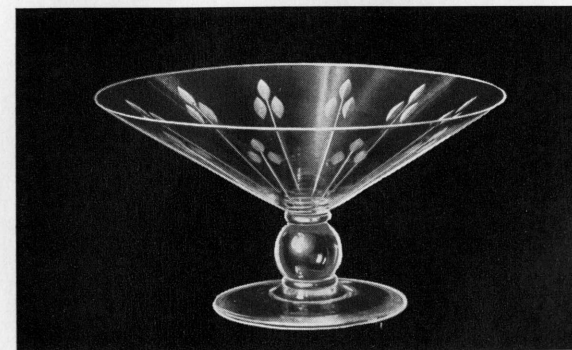
Skål. — Bowl. Code: SB 061
No. 180/71. Bh.



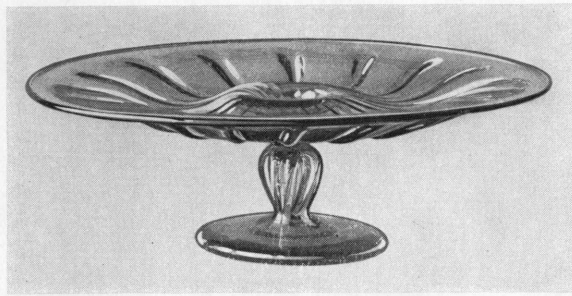
Skål. — Bowl. Code: SB 057.
No. 100. Bh.



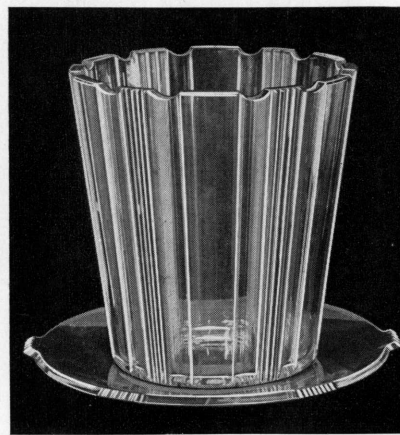
Konfektskål. — Confections bowl.
Code: KC 013—15
No. 16106



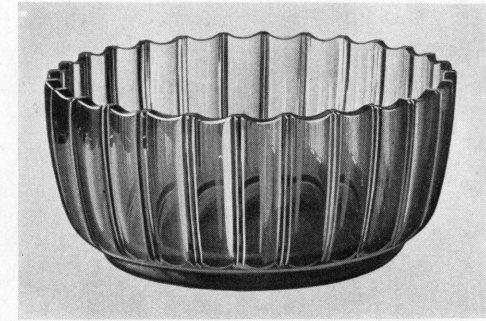
Skål. — Bowl. Code: SB 060
No. 150. Bh.



Skål. — Bowl. Code: SB 062
No. 189/71. Bh.



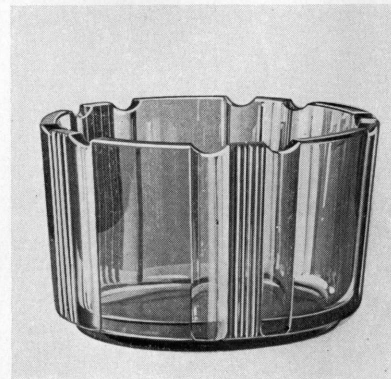
Skål. — Bowl. Code: SB 063
No. 190. Bh.



Skål. — Bowl. Code: SB 064
No. 201. Bh.



Skål. — Bowl. Code: SB 065
No. 206/71. Bh.



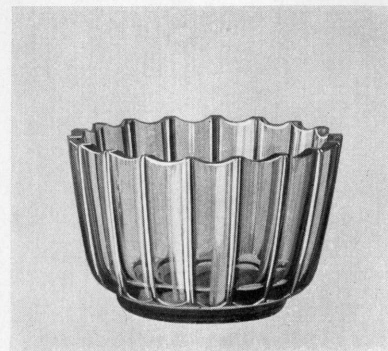
Skål. — Bowl. Code: SB 066
No. 207. Bh.



Skål. — Bowl. Code: SB 067—68
No. 208/71. Bh.



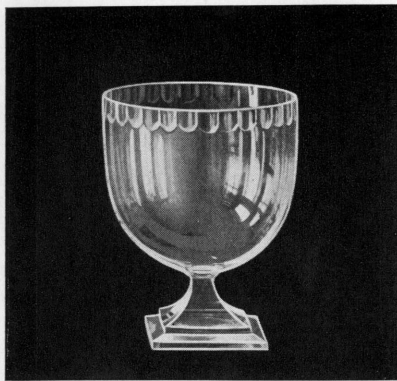
Skål. — Bowl. Code: SB 069—70
No. 216. Bh.



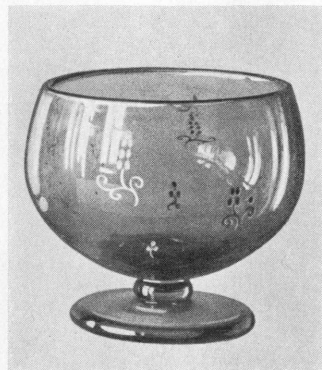
Skål. — Bowl. Code: SB 071
No. 202/71. Bh.



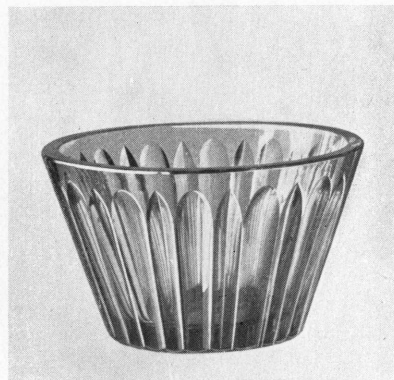
Skål. — Bowl. Code: SB 072—73
No. 217. Bh.



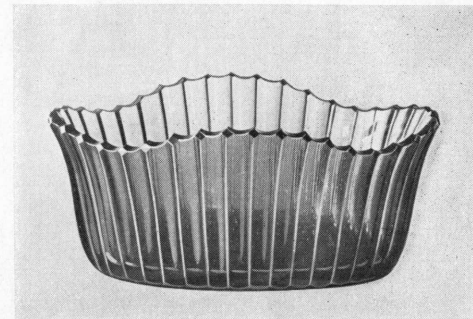
Konfektskål. — Confections bowl.
Code: KC 016
No. 235. Bh.



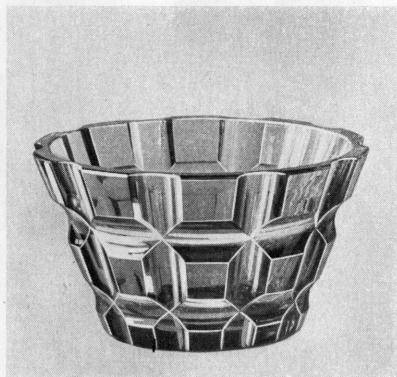
Skål. — Bowl. Code: SB 074
No. 231/71. Bh.



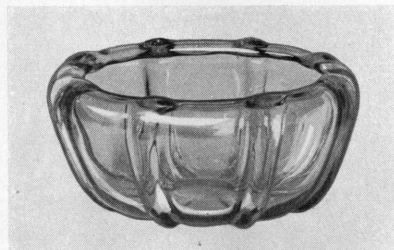
Skål. — Bowl. Code: SB 075
No. 249/71. Bh.



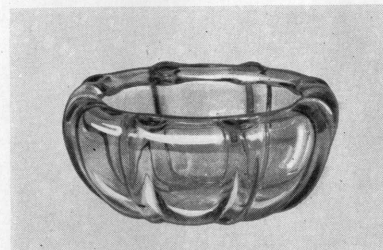
Jardinier. — Jardinière. Code: JA 006
No. 312/71. Bh.



Skål. — Bowl. Code: SB 077
No. 275/71. Bh.



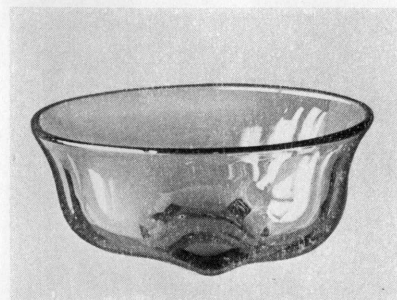
Skål. — Bowl. Code: SB 078
No. 281/71. Bh.



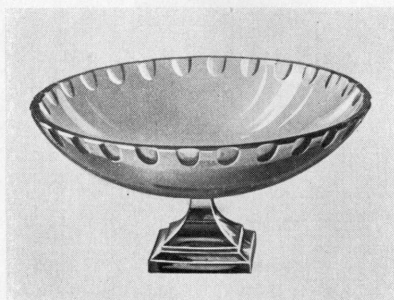
Skål. — Bowl. Code: SB 079
No. 282/71. Bh.



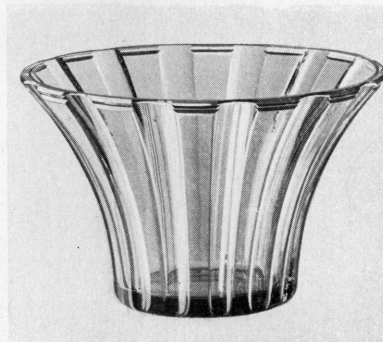
Skål. — Bowl. Code: SB 080
No. 286/71. Bh.



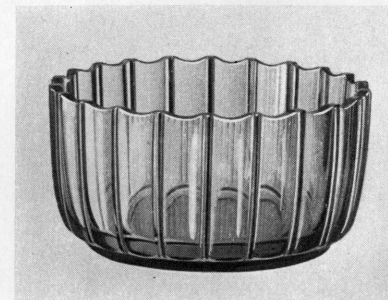
Skål. — Bowl. Code: SB 081
No. 295/71. Bh.



Skål. — Bowl. Code: SB 082
No. 300/71. Bh.

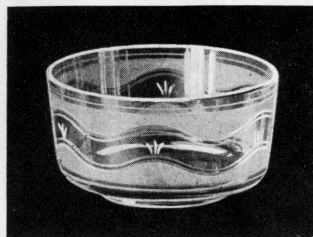


Skål. — Bowl. Code: SB 083
No. 305/71. Bh.

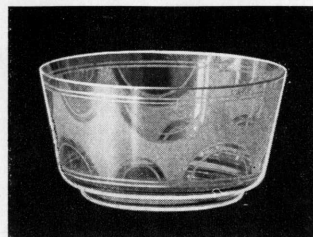


Skål. — Bowl. Code: SB 076
No. 265/71. Bh.

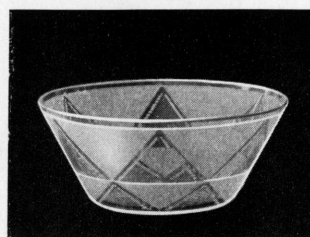
Sockersatser. — Sugar sets.



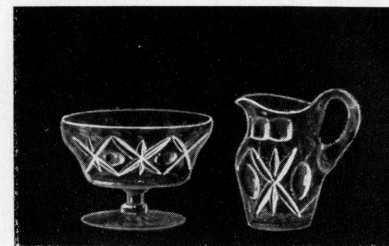
Skål. — Bowl.
Code: SB 084
No. 250. Ol.



Skål. — Bowl.
Code: SB 085
No. 252. Ol.



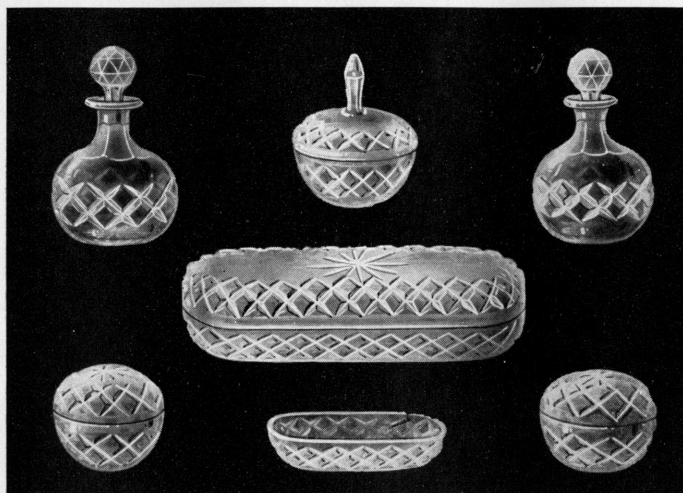
Skål. — Bowl.
Code: SB 086
No. 254. Ol.



Sockersats. — Sugar set.
Code: SD 004
Lincoln.



Sockersats. — Sugar set.
Code: SD 003
Fyrväppling.



Toilettgarnityr. — Toilet set.
Code: TB 001—09
Karla.



Sockersats. — Sugar set.
Code: SD 005
Carl Johan.



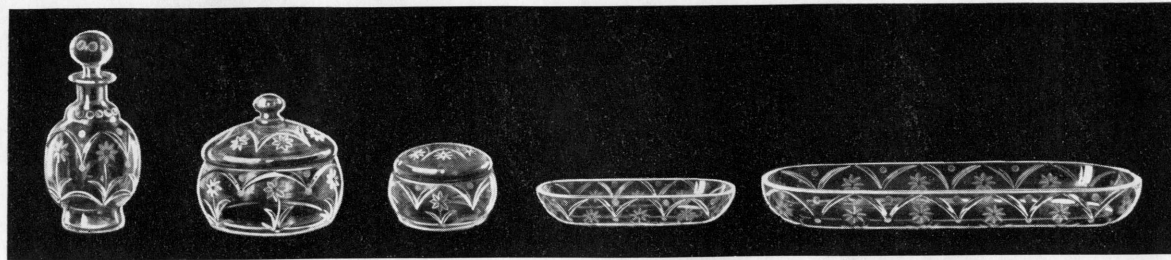
Sockersats. — Sugar set.
Code: SD 007
Vincent.



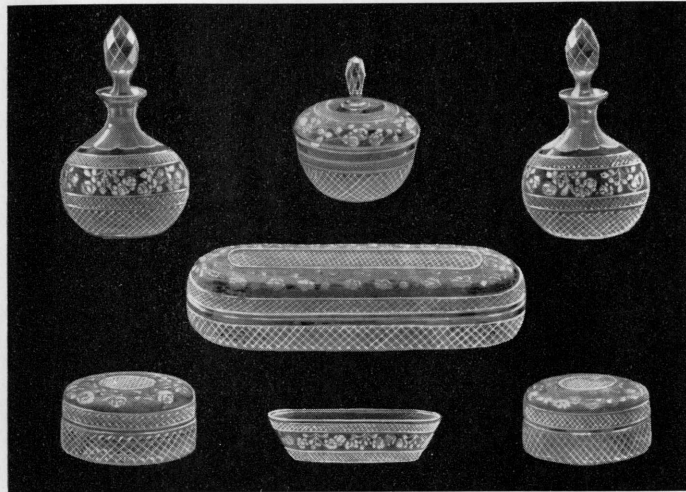
Sockersats. — Sugar set.
Code: SD 006
Ryd. T. G.



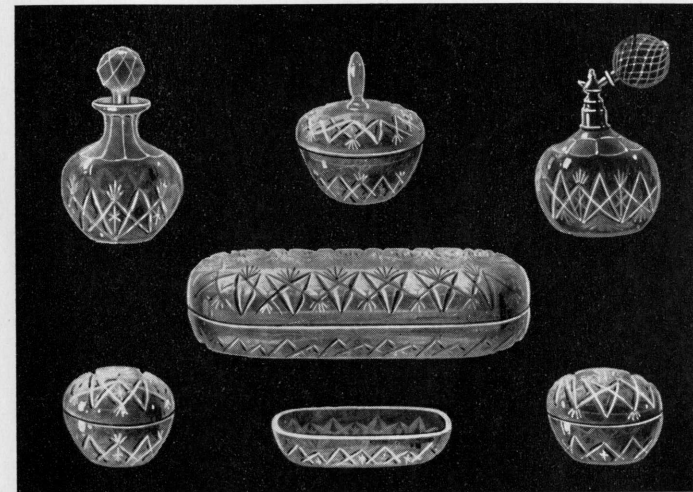
Sockersats. — Sugar set.
Code: SD 008
Ryd B. 4/61



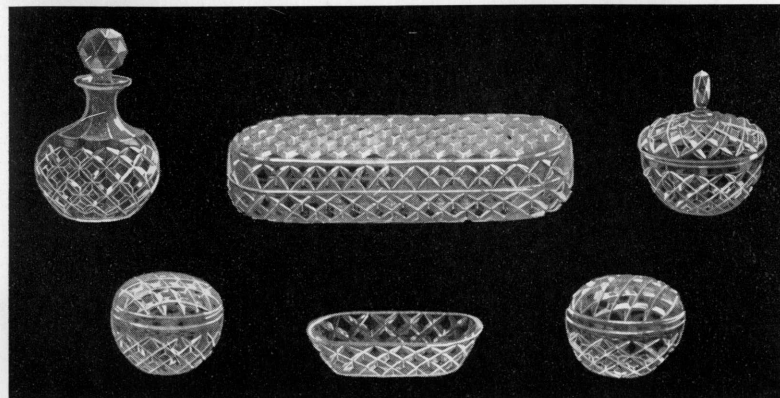
Gunilla. Code: TB 010-14.



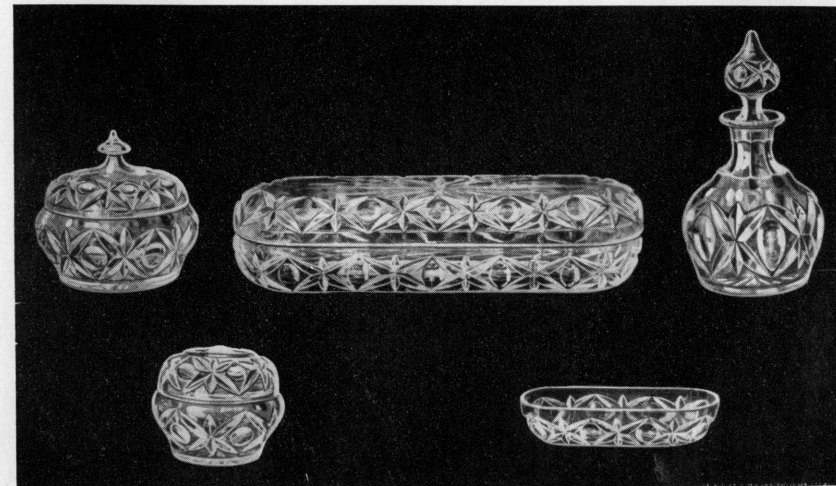
Tre Rosor. — Three Roses. Code: TB 015-21



Helena. Code: TB 022-31



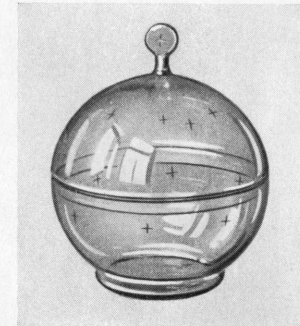
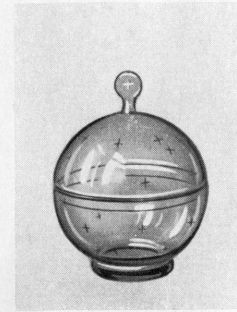
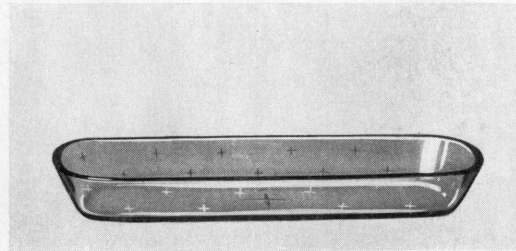
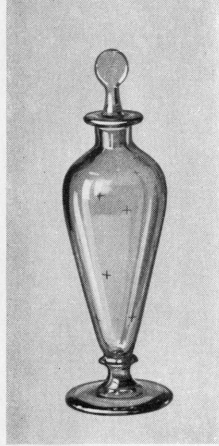
No. 16106. Code: TB 032-41



Lincoln. Code: TB 042-50

Code: TB 051—56

No. 200/71. Bh.



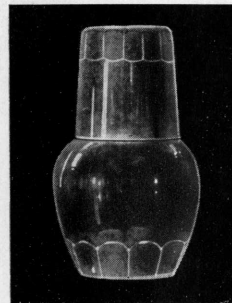
Vattenkaraffer. — Toilet bottels.



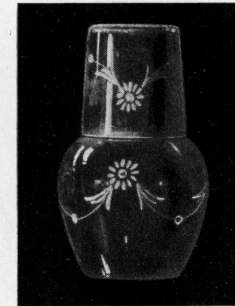
Code: VA 016
Helga.
27. 11. 14.



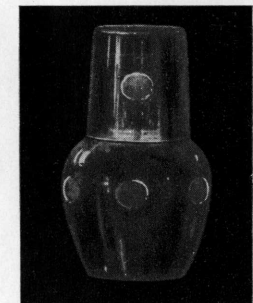
Code: VA 018
Vincent.
Nov. 3



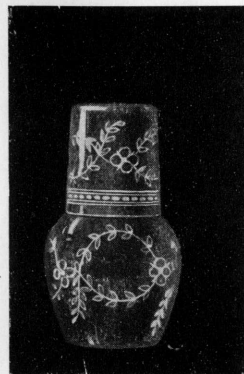
Code: VA 020
No. 174 E.
Facett. — Faceted.



Code: VA 022
No. 174 E
Graverad. — Engraved.



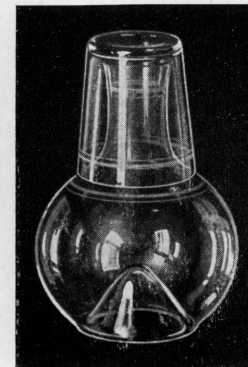
Code: VA 024
No. 174 E
6 kulor. — 6 balls.



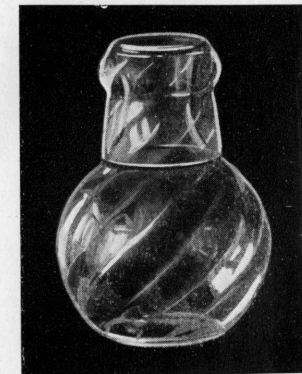
Code: VA 012
Fyrväppling.
27. 11. 14.



Code: VA 014.
Emil.
T. G.



Code: VA 026
No. 120. Bh.



Code: VA 028
No. 233. Bh.

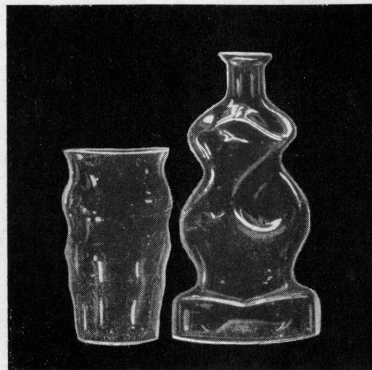
Karaffer. — Decanters.



Karaff. — Decanter.
Code: KB 041
Carl Johan.
No. 8217



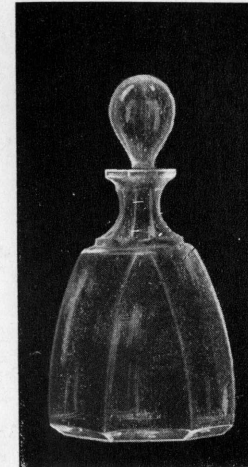
Karaff. — Decanter.
Code: KB 042—43
Carl Johan.
6-kant. — 6-edged.



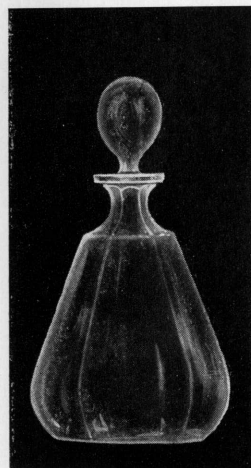
Whiskyglas. Karaff.
Whisky goblet. Decanter.
Code: VB 010 Code: KB044
Charleston.



Karaff. — Decanter.
Code: KB 045
Lincoln.



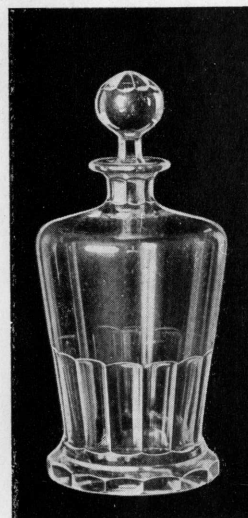
Karaff. — Decanter.
Code: KB 046
Salomon.



Karaff. — Decanter.
Code: KB 047
Sigurd.



Karaff. — Decanter.
Code: KB 048
Vincent.
6-kant. — 6-edged



Karaff. — Decanter.
Code: KB 050
No. 170. Bh.



Karaff. — Decanter.
Code: KB 049
No. 60. Bh.



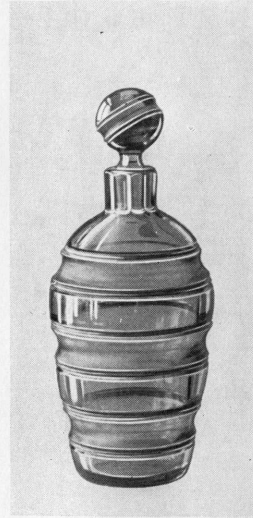
Karaff. — Decanter.
Code: KB 051—52
6-kant. — 6-edged.



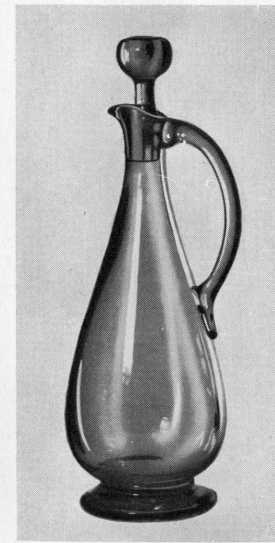
Whiskyglas. Karaff.
Whisky goblet. Decanter.
Code: VB 012 Code: KB056
No. 256. Bh. No. 255. Bh.



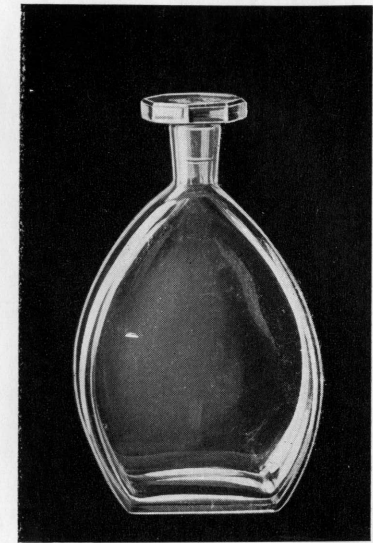
Karaff. — Decanter.
Code: KB 057
No. 267/71. Bh.



Karaff. — Decanter.
Code: KB 058
No. 266/71. Bh.



Vinkaraff. — Wine decanter.
Code: VC 007
No. 51/71. Bh.



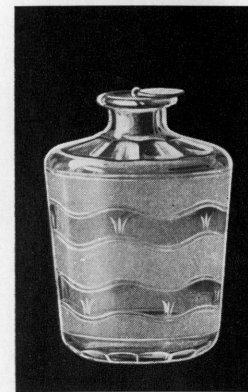
Karaff. — Decanter.
Code: KB 059
No. 294/71. Bh.



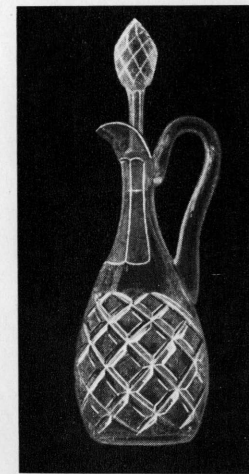
Vinkaraff. — Wine decanter.
Code: VC 008—09
Trosa. 61.



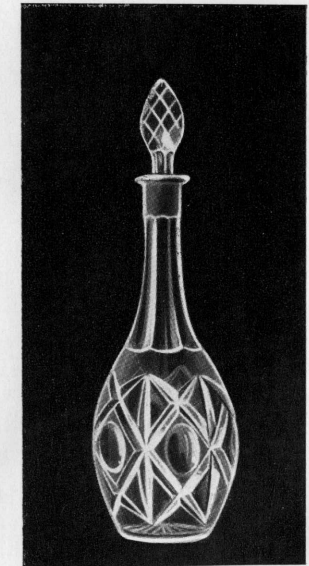
Whiskyglas. Karaff.
Whisky goblet. Decanter.
Code: VB 01 Code: KB 055
No. 232. Bh. No. 232. Bh.



Karaff. — Decanter.
Code: KB 060
No. 276. Ol.



Vinkaraff. — Wine decanter.
Code: VC 013
Carl Johan.
Topp.



Vinkaraff. — Wine decanter.
Code: VC 010—12
Lincoln.